

ALL OUR BURNERS ARE SOLID BRASS.

Edward Miller & Co.

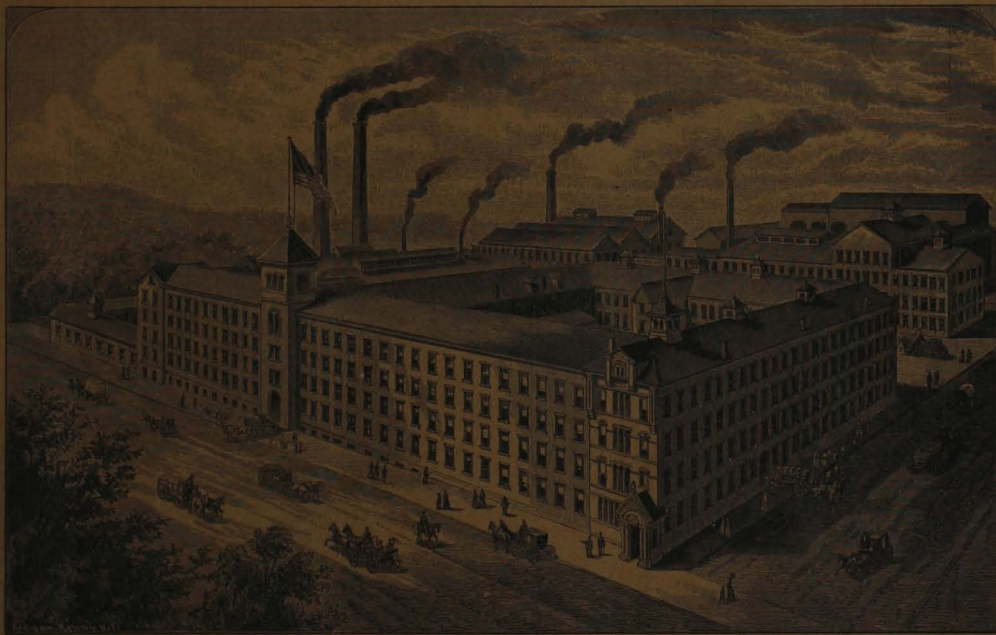
Do you use Burners

ase lots?

Miller, Edward, & Co.  
TC-112793

Factories, Rolling Mill and Foundries,  
**MERIDEN, - CONN.**

Where MILLER Goods are Made.



**Catalogue No. 97.**

**Dept. C.**

Address all Correspondence to  
**63 PEARL ST., BOSTON, MASS.**

er doz.  
1.13  
by

112793  
The Juliette K. and Leonard S.  
Rakow Research Library  
*Purchased through the generous support of*  
The Rakow Library  
Endowment Fund



## JUST A WORD TO YOU.

We have manufactured Kerosene Burners and a general line of Lamp Goods since 1844--over sixty years of experience.

This in itself should guarantee us to you. We promise you first quality goods "Miller" made.

Yours very truly,

EDWARD MILLER & CO.



# ALL OUR BURNERS ARE SOLID BRASS.

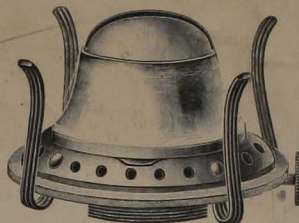
**Venus Burner.**  
The Old Standard.



No.	List per doz.
0 (E) Venus Burners, Brass,	\$1.25
1 (A) " " " "	1.38
2 (B) " " " "	1.88

Take Sun Chimneys.

**Victor Burner.**



No.	List per doz.
0 (E) Victor Burners, Brass,	\$1.00
1 (A) " " " "	1.13
2 (B) " " " "	1.63

Take Sun Chimneys.

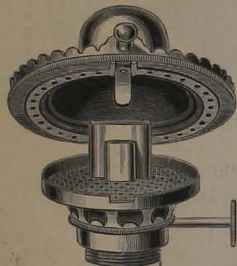
Do you use Burners

in full case lots?

Write us for prices.

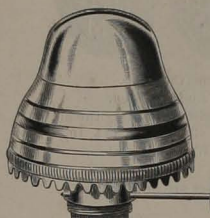
**ORIGINAL**

**Excelsior Sun Hinge Burner.**



No.	List per doz.
0 (E) Exc. Sun Hinge Burners, Brass,	\$1.88
1 (A) " " " "	2.13
2 (B) " " " "	3.00
3 (D) " " " "	6.88

**Zenith No Chimney Burner.**



We would call attention of the trade to our Patent Zenith No Chimney Burner. This Burner has been in use for years, and has given satisfaction in all cases. It is by far the best and the only No Chimney Burner that gives a light equal to a Chimney Burner; it gives a solid, clear flame, without smoke. It is provided with our Patent Gas Tube, which is a preventive against explosions.

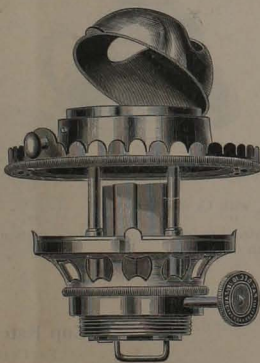
For Regular Kerosene Oil. 150°.

No.	List per doz.
1 (A) Zenith Burner, Brass,	\$4.00
2 (B) " " " "	5.25

**The Favorite Burner, Improved.**

With  
Hinged Cone  
for  
Trimming.

Patent  
Lifting Device  
for  
Lighting.

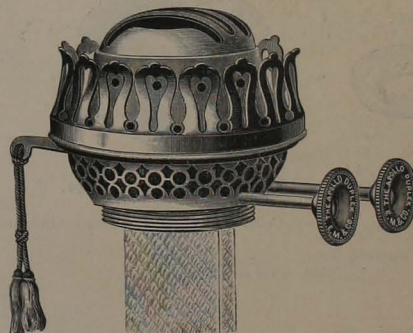


An  
Excellent  
Burner  
for  
Library Lamps,  
Hall Lamps,  
Chandeliers  
and  
Brackets.

No.	List per doz.
2 (B) Favorite Burners, Brass or Rich Gold,	\$3.75

Takes Excelsior Sun Hinge Chimney.

**The Apollo Duplex Burner.**



No.	List per doz.
3 (D) Apollo Duplex Burners, with Extinguishers, Brass,	\$6.25
3 (D) " " " " without " "	5.00

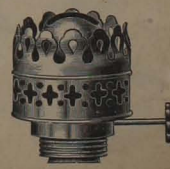
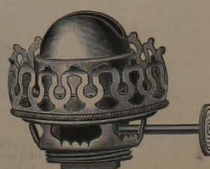
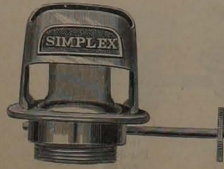
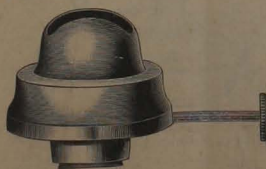
Wicks are included in price.  
Takes No. 2 Miller or Duplex Chimney (Miller preferred,) and Duplex Wicks.  
Above Burners can be furnished in Rich Gold if desired.

**Tubular Lantern Burner.**

**Simplex Lantern Burner.**

**Stellar Burner.**

**Slip or Nobby Burner.**



No.	Shaft.	List per doz.
0 No. 1 Wick, 2 1/4 inch, Brass,		\$1.13
2 No. 2 " 3 " "		2.13

No.	Shaft.	List per doz.
1 (A) 1 3/4 inch, Brass,		\$1.00
2 (B) 2 1/2 " " "		1.88

No.	List per doz.
0 (E) Stellar Burner, Brass,	\$1.13

Takes Little Gem Chimney and  
No. 0 Wick.

No.	List per doz.
00 Slip or Nobby Burner, Brass,	\$1.13

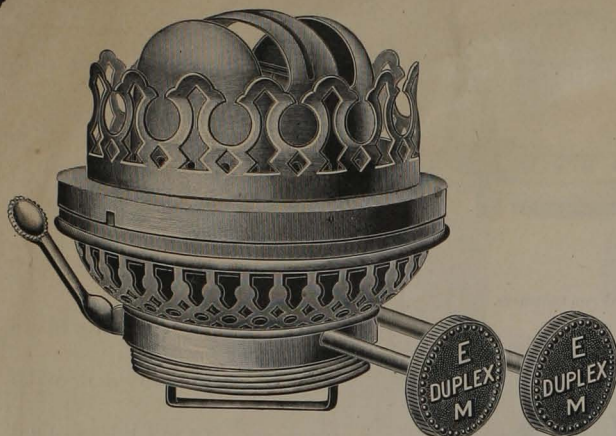
Takes Nobby Chimneys and Nobby  
or Nutmeg Wicks.

# The "1904 E. M. DUPLEX" BURNER.

FOR NICE LAMPS.

Heavy Stock.

Fine Finish.



Has Extinguisher and Removable Cone for Trimming and Cleaning.  
Regular finish, Polished Brass. Can be furnished in any finish desired.  
It is furnished with two regular Wicks also a third one, which assists in feeding the oil.  
It takes "1904 E. M. Duplex" Trimmings as follows: 4 inch Globe Holder, 5, 10, 12 or 14 inch Shade Ring and 10 inch Tripod. Regular Duplex Wicks and Chimney.

Expanding Screws to fit (No. 2 or B Collar) can be furnished but are not included in price of Burner.

No.  
3 (D) "1904 E. M. Duplex" Burners, with Wicks,

Pol. Brass.  
Per dozen.  
\$15.00

## The Boudoir Burner.

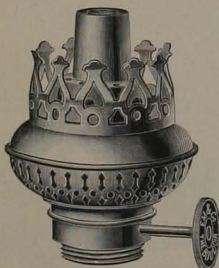
## Chimney for Boudoir Burner.

### Boudoir Globe Holder.

2 3/4 inch.



	Per doz.
Brass,	\$1.13
Nickel or Silver,	1.38
Black,	1.38



Furnished with Wick.  
For Small Banquet Lamps.

List per doz, \$1.30

Fits our Regular No. 0 (A) Collar. Takes Regular Princess Chimney as above.

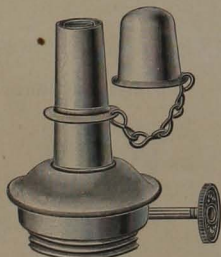
No.	Per doz.
1 (A) Boudoir Burners, Brass,	\$5.63
1 (A) " " Nickel, Silver or Black,	6.25

## Union Ratchet Burner.

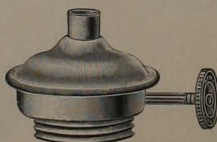
## Coach Lamp Burner.

## Cup Ratchet Burner

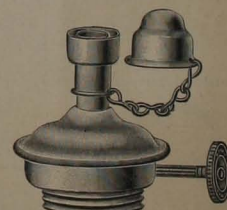
For Coach Lamps.



	With Extinguisher.	Without Extinguisher.
1 (A) Brass, per dozen,	\$1.00	\$0.90



No.	Length of Tube.	Brass, Per doz.
1 (A),	3/8 inch above Cap,	\$0.88



	With or without Extinguisher.
	Length of Tube.
No.	With Extinguisher.
(A) 3/8 inch above Cap,	\$0.90
	Without Extinguisher.
	\$1.00

## No. 1 Solar Burner.



No.  
1 (A) Solar Burner. Fits No. 1 or (A) Collar,  
Takes No. 1 Sun Chimney and No. 2 (B) Wick.

Brass  
Per doz  
\$2.13

## No. 2 Solar Burner.



No.  
2 Solar Burner. Fits No. 2 (B) or No. 3 (D) Collar,  
Takes Regular D Wick and No. 2 or B Sun, Slip Chimney.

Brass  
Per doz.  
\$2.88

## Vesta Burner.

Improved, for Light Oil.



We have made several improvements in the Vesta Burner, and the one we are now furnishing the trade is the most perfect Burner of its kind yet made.

No.	Per doz.
1 6 Jet Vesta Burner, with Candle Wick,	\$1.88
1 8 " " " " " " " " " " " "	2.50
Above prices are for Burner complete, without Lamp.	
Price for Heads only with 6 Jets,	1.25
" " " " " 8 "	1.63



## Tempest Patent Brass Lantern.

**Perfectly Safe, Durable and Cleanly.**

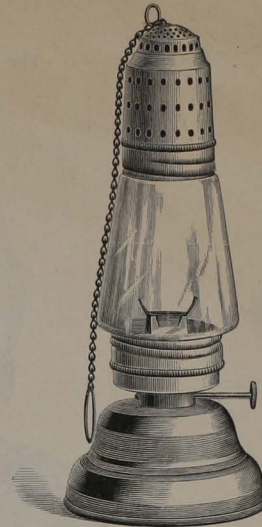
No accumulation of Smoke in top can stop the draught.

**SPECIAL NOTICE.**—The great advantage this Lantern possesses over others of similar style consists in the Tempest Lantern having a corrugated shield inside of the top perforate, which cannot clog up with smoke as is the case with finely perforated tin after being used a while.

The Tempest Lantern is for burning kerosene oil, and will burn with steadiness in the most violent gale of wind without smoking. It is suitable for house, barn, railroad and steamboat use, wherever a clean, compact, durable, cleanly, perfectly safe non-explosive Lantern is desired.

In using, fill the Lamp with heavy kerosene of good quality, and pour out all that the cotton will not absorb.

**Furnished with Wicks.**



## Victoria Brass Lantern.

The Victoria is a neat, compact Lantern. It burns steadily and does not smell, thus proving it a desirable house Lantern.

Victoria Lanterns, guarded, height, 11 $\frac{1}{4}$  inches.  
List per dozen, Wicks included, \$13.75

Extra Globes for Victoria Lanterns,  
List per dozen, \$2.20



### Price List of Tempest Patent Brass Lanterns.

No.		Height, 8 inches,	Per dozen.
1	Tempest, with Chain,	" 9 "	\$11.25
2	" " "	" 10 $\frac{3}{4}$ "	13.13
3	" " "	" 9 "	13.13
3	" " and Guard,	" 10 $\frac{3}{4}$ "	18.13
1	" Globes,	" " "	1.80
2	" " "	" " "	1.80
3	" " "	" " "	2.10
3	" Globe Guards,	" " "	2.40

### Reducing Collars.



No.	Diameter of Threads.	Brass, Per doz.
2 (B) to 1 (A),	1 $\frac{1}{8}$ to $\frac{3}{8}$ inch,	\$0.50
3 (D) to 2 (B),	1 $\frac{3}{8}$ to 1 $\frac{1}{2}$ "	1.00

One-half gross in a box.

### Expanding Screws.



No.	Diameter of Threads.	Brass, Per doz.
2 (B) to 3 (D),	1 $\frac{1}{8}$ to 1 $\frac{3}{4}$ inch,	\$1.00
1 (A) to 2 (B),	$\frac{3}{8}$ to 1 $\frac{1}{8}$ "	.50

One-half gross in a box.

### Embossed Collars.



Nos. 1 (A), 2 (B), 3 (D).

Prices same as for Beaded Collars below.

### No. 4 Embossed Feeder Collar and Cap.



Collars are put up 1 Dozen in a Roll.

No.	Dozen.
0 (E) and 1 (A) Collars, 1000 in a Barrel.	
2 (B) Collars,	500 "
3 (D) "	250 "
4 Embossed Collars, 1 gross in a Box.	

### Beaded Collars.



Nos. 0 (E), 0 (A), 1 (A), 2 (B), 3 (D) and 2 (B) for A Burner.

### Prices for Beaded and Embossed Collars.

No.	Diameter of Thread,	Light, Beaded or Embossed.	Heavy, Beaded.
0 (E) Diameter of Thread, $\frac{7}{8}$ inch, of Bottom, 1 $\frac{1}{4}$ inches, Brass, per dozen,		\$0.18	
0 (A) " " "		.28	
1 (A) " " "		.18	\$0.40
2 (B) " " "		.25	.55
3 (D) " " "		.65	.83
2 (B) for A Burner, " "		.50	
4 Emb., with Caps, " "		per gross, 3.00	

### Feeder Screws and Hoops.



Solid Hoop.



Butted Hoop.

No.	Feeder Screws and Solid Hoops,	Diameter, $\frac{1}{2}$ inch,	List per 100
1	" " "	" "	\$1.62
2	" " "	" "	1.71
1	" " Butted " "	" "	1.35
2	" " " "	" "	1.44

Five hundred in a box.

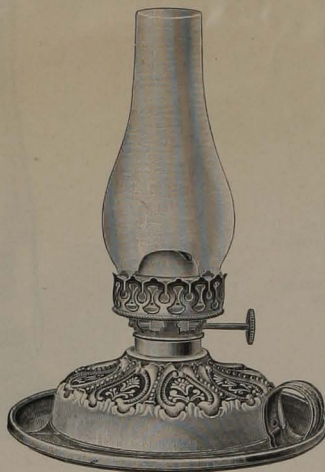
### Solid Hoops.



No.	List per 100
1 or A Kerosene Size,	\$0.90
2 or B " "	1.80
4 or Feeder " "	.90

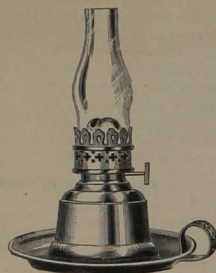
# Night Lamps.

The Pearl Lamp.



Pearl Night Lamp, complete, with Stellar  
Burner, Chimney and Wick, . . . \$3.33 \$3.75  
Height to top of Burner, 2 $\frac{1}{4}$  inches.

The Nobby Lamp.



Nobby Night Lamp, complete with Nobby  
Burner and Chimney, . . . \$3.50 \$3.75  
Height to top of Burner, 3 $\frac{1}{4}$  inches.

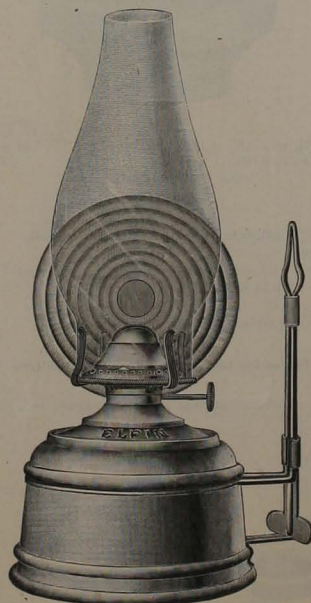
## NON-EXPLOSIVE HAND LAMPS.



No. 1. Non-Explosive Brass Hand Lamp.  
Height to top of Burner, 6 inches.  
With No. 1 (A) Skirt Burner.  
List per dozen, as illustrated,  
Brass, . . . \$30.00  
Nickel Plated, . . . 33.75  
Takes No. 1 Excelsior Sun  
Hinge Chimney.

Same as the old P. & H. No. 5.

The Elfin Lamp.



Elfin Night Lamp, with No. 0 Venus Burner,  
Wick and Adjustable Reflector, with  
Chimney, . . . \$7.15 \$7.90  
Height to top of Burner, 4 $\frac{3}{4}$  inches.  
Holds full pint of oil. Burns 17 hours.  
Has Removable Handle or Hanger.

The Acme Lamp.



Acme Night Lamp, complete, with Stellar  
Burner, Chimney, Wick, Adjustable  
Reflector and Handle or Hanger, . . \$4.50 \$5.00  
Height to top of Burner, 4 inches.



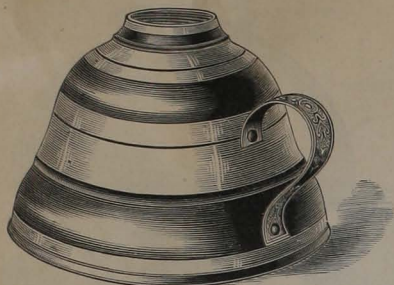
No. 1. Non-Explosive Tin Hand Lamp.  
With No. 1 (A) Skirt Burner.  
Height to top of Burner, 5 $\frac{1}{2}$  inches.  
List per doz.  
Lamp and Burner without Chimney, . . \$16.25  
" Complete with No. 1 Excelsior Sun  
Hinge Chimney, . . . 17.45

Same as the old P. & H. No. 3.



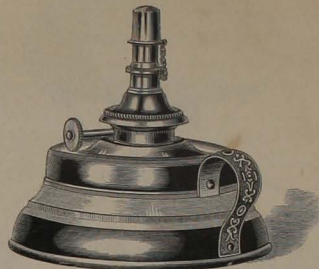
# Brass Hand Lamps, for Use about the House, Factory, Etc.

**Brass Hand Lamp.**



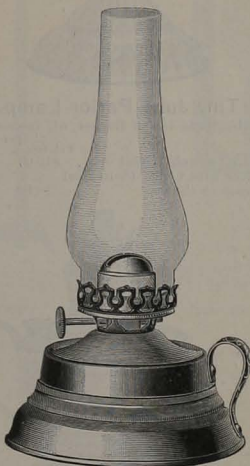
No. 1 Brass Hand Lamp, Height, 2 inches, List per doz. \$1.75  
 2 " " " 2 1/4 " 1.88  
 Thread Diameter, 7/8 inches for either size.  
 Take No. 0 (E) or No. 1 (A) Burners.

**Cotton States Brass Lamp.**



No. 2 Cotton States Hand Lamp, complete, with Union Ratchet Burner and Wick for burning light oil. List per doz. \$2.75  
 Height to top of Burner, 3 1/2 inches.

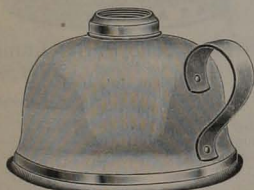
**Stellar Brass Hand Lamp.**



Stellar Hand Lamp, complete, with Stellar Burner, Chimney and Wick. List per doz. \$3.00  
 Height to top of Burner, 3 1/4 inches.  
 Case contains 12 dozen.  
 Weight, gross, 78 lbs. Net, 48 lbs.  
 Measurements, 17 x 24 x 27 inches.

**Extra Heavy Spun Brass Lamp.**

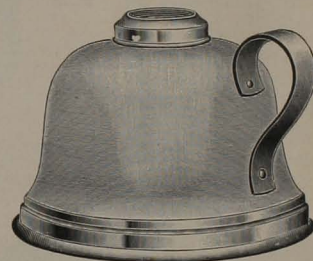
Nicely finished and a splendid Lamp for use about the House.



No. 20 Brass Hand Lamp, List per doz. \$12.50  
 No. 1 (A) Collar.  
 Takes No. 0 (E) or No. 1 (A) Burner.  
**Polished Brass. Extra Finish.**  
 Height, 3 inches Spread of Base, 4 1/4 inches.  
 One in a box.

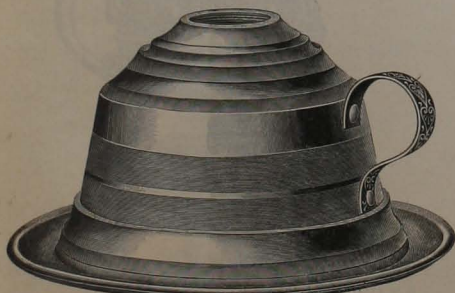
**Extra Heavy Spun Brass Lamp.**

No better Hand Lamp made for use in the House, Factory or for Railroads.



No. 25 Brass Hand Lamp, List per doz. \$18.75  
 No. 2 (B) Collar.  
 Takes No. 2 (B) Burner.  
**Polished Brass. Extra Finish.**  
 Height, 4 inches. Spread of Base, 5 1/2 inches.  
 One in a box.

**Boston Brass Hand Lamp.**

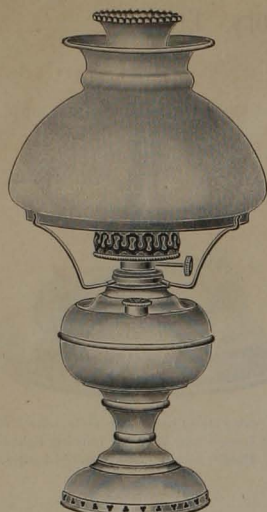


No. 8 Boston Hand Lamp, 5 inches, Height, 2 1/4 inches, List per doz. \$3.00  
 10 " " " 5 3/4 " 2 3/4 " 3.50  
 With Flanged Base. Thread Diameter 7/8 inch.  
 Takes No. 0 (E) or No. 1 (A) Burner.

**Monarch Brass Hand Lamp.**



Monarch Safety Hand Lamp, List per doz. \$5.00  
 Height, 3 1/4 inches. Spread of Base, 4 1/2 inches.  
 Thread Diameter, 7/8 inch.  
 Takes No. 0 (E) or No. 1 (A) Burner.  
 It has a Recess Top to prevent any overflow of oil running down the sides.  
 It has a large Filler to prevent overfilling, also an Inner Tube to prevent overflow of oil when carried about.



**No. 2009 Brass Table Lamp.**

With No. 1 Solar Burner.  
Nickel Plated.

Takes No. 1 Sun Chimney and 7 inch Shade.  
Height to top of Burner, 9¼ inches.  
Complete with 7 inch Shade as shown,  
List per dozen, \$13.50



**Tiny Juno Parlor Lamp.**

Height to top of Burner, 8¼ inches

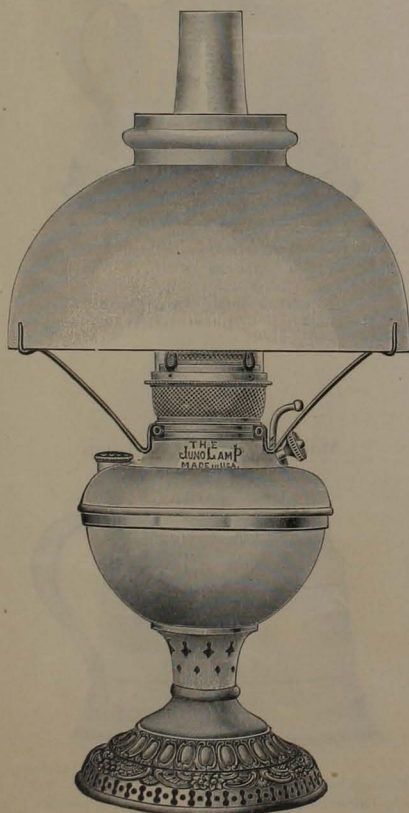
	List per dozen.	Pol. Brass.	Nickel.
Lamp and 6 inch Tripod only,		\$15.00	\$16.25
Complete with 6 inch Plain Opal Shade as shown,	18.00		19.25



**No. 1 Juno Parlor Lamp.**

No. 1 Center Draught Lift Burner.  
Height, 10¼ inches.

	List per dozen.	Pol. Brass.	Nickel.
Lamp and Tripod only,		\$23.75	\$25.00
Complete with 7 inch Opal Shade as shown,	27.50		28.75



**No. 30 J. Juno Parlor Lamp.**

Embossed Metal Base.

No. 2 Center Draught Lift Burner.  
Height to top of Burner, 11½ inches.

Holds nearly 3 pints of Oil. Burns from 7 to 8 Hours.

	List per dozen.	Pol. Brass.	Nickel.
Lamp and 10 inch Tripod only,		\$26.25	\$27.50
Complete with 10 inch Opal Shade and Chimney as shown,	31.75		33.00



**Juno Home Lamp.**

List per dozen.  
Brass Finish.

No.	complete with	List per dozen.
0 J. with No. 0 Miller Non-Lifting Burner,	as illustrated,	\$11.75
0 J.C. " { 6 inch Tripod, Plain Dome Shade, No. 0 Miller Chimney and Wick, as shown on Tiny Juno Parlor Lamp above.		15.95
	Height to top of Burner, 6½ inches. Holds 1½ pints of Oil. Burns 8 hours.	



**Tiny Juno Hand Lamp.**

Height to top of Burner, 6¾ inches.  
Furnished with 6 inch Tripod.

	List per dozen.	Pol. Brass.	Nickel.
Lamp and 6 inch Tripod only,		\$16.00	\$16.25
Complete with 6 inch Opal Shade and Chimney, as shown on Tiny Juno Parlor Lamp above.	18.00		19.25



**Miller Hand Lamp.**

No.	complete with	List per dozen.
0 M. with No. 0 Miller Non-Lifting Burner and 6 inch Tripod,		\$22.50
0 M.C. " { 6 inch Opal Dome Shade, No. 0 Miller Chimney and Wick,	complete with	25.50
	Height to top of Burner, 7¼ inches. Holds 1½ pints of Oil. Burns 8¼ hours.	26.75



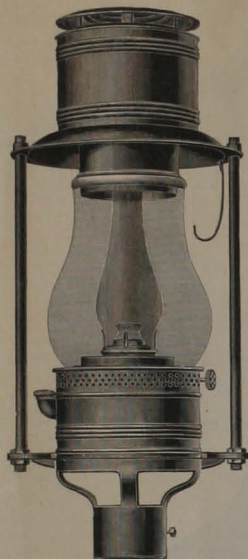
# Miller Lamps for Out-Door Use.

The Strongest and Best Made.  
Most Durable on the Market.

Black Iron Frames with Lamps and Tops  
in Green Finish.

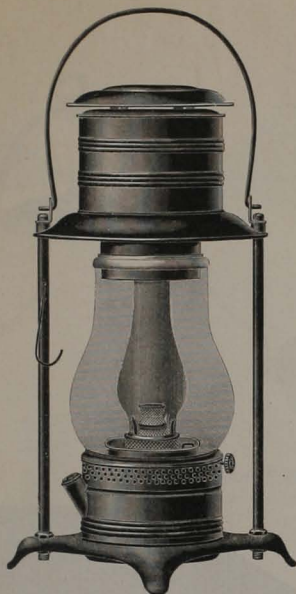
Street Lamp.

Portable Lantern.



**No. 153 M. with No. 2 Burner.**  
Fitted with Socket,  $2\frac{3}{4}$  inches  
inside diameter, for Post  
or Bracket.  
Height as shown, 30 inches.

No.	Each.
153 M. without Chimney,	\$10.00



**No. 155 M. with No. 2 Burner.**  
Spread of Base,  $15\frac{1}{4}$  inches.  
Height with Bail down,  $25\frac{1}{4}$  inches.  
" " " raised,  $29\frac{1}{4}$  "

No.	Each.
155 M. without Chimney,	\$10.00

Nos. 153 and 155 above, have Center Draught Removable Founts, No. 2 Screw Thread Burners with Lift Attachment for cleaning and *Miller's Ideal Wick Lift*. They are Up-to-date and First Class in every particular. No better ones made.



**No. 3 Bracket.**  
Twenty inches long.  
Black Japan Finish, Each, \$2.50  
For Nos. 57 and 153 M. Street Lamps.



**8 inch Square Lantern.**  
Complete with Fount, Burner, Wick, Chimney  
and Silvered Glass Reflector, List each, \$3.00

## Tubular Lamps and Lanterns.

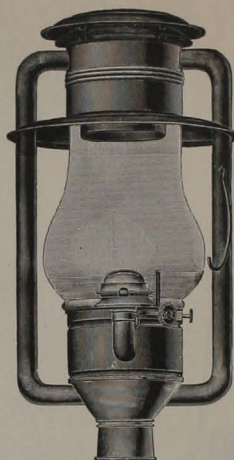
FOR OUT-DOOR USE.

Patented Dec. 6 and Dec. 20, 1898.

Fitted with No. 3 Tubular Lantern Burner (for No. 3 Wick) with Hinged Cone, for Trimming and Cleaning.

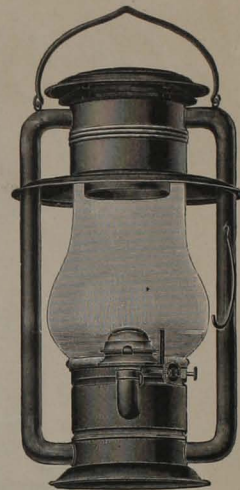
They Hold Three Pints of Oil, and are provided with a Patented Time Device for Burning at Choice, a Large Flame from 4 to 20 Hours.

EASY TO LIGHT AND FILL.



**No. 57 Street Lamp.**  
Fitted with Socket for Post or Bracket,  
inside Diameter, 3 inches.

No.	Each.
57 Green Finish, complete,	\$6.88



**No. 58 Portable Lantern.**  
Height, with Bail down,  $22\frac{3}{4}$  inches.  
" " " raised,  $27\frac{3}{4}$  "

No.	Each.
58 Green Finish, complete,	\$6.88

WITH WHITE REFLECTING SURFACE.

**To Take Out Globe.**—Raise the Globe and lift off the Fount.  
**To Light.**—Raise the Globe and rest it on the Hook.

**To Fill.**—Turn up the Cap connected with Filler Tube, which cannot fall off.

**To Regulate Time.**—Turn the Time Button till the shaft is raised to full height, and the spring rests in hole of button and it will be **set to burn four hours**. Every half revolution backward, of Time Button, increases the time of burning four hours. In this way it can be set to burn from four to twenty hours as desired.

## A GREAT LIGHT GIVER

Just the Lamp for

STATIONS, PORCHES, STABLES, DOCKS, ETC.  
Will not go out in the Most Violent Gale.

A STEADY BRIGHT FLAME.

LARGE REFLECTING SURFACE OF BRIGHT CORRUGATED TIN.

Fount in  
Brass Finish.  
With  
No. 2 Lift Burner  
and Wick.

Takes No. 2  
Miller Chimney.



**No. 52 Juno Station Lamp.**

No.	Each.
52 Juno Station Lamp, with No. 2 Juno Factory Fount and Chimney,	\$10.75

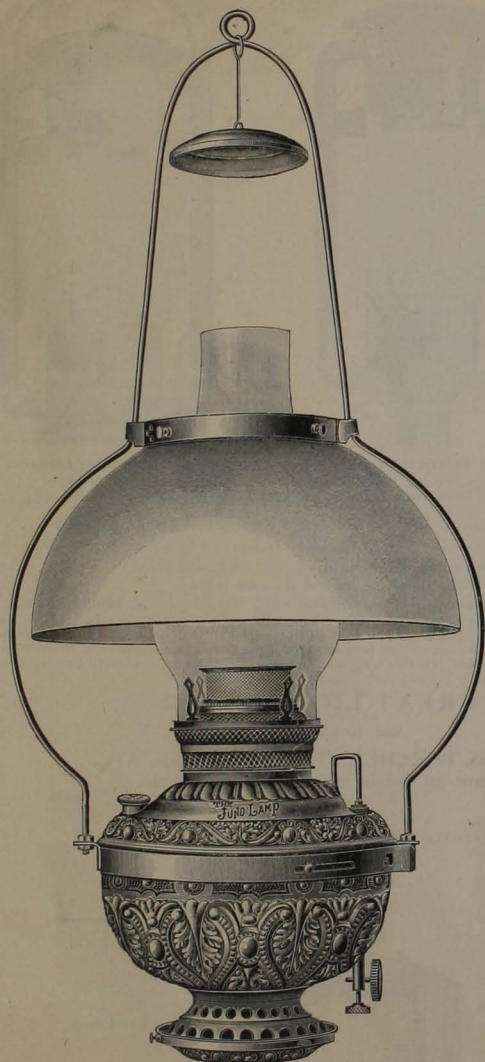
Holds  
2 Quarts of Oil.

Burns 10 Hours.

Outside in  
Green Finish,  
Inside of  
Bright Tin.

FOR STORES, HALLS OR ANY PLACE REQUIRING A STRONG AND STEADY LIGHT.

If Extensions are wanted, see next page for illustration and prices.

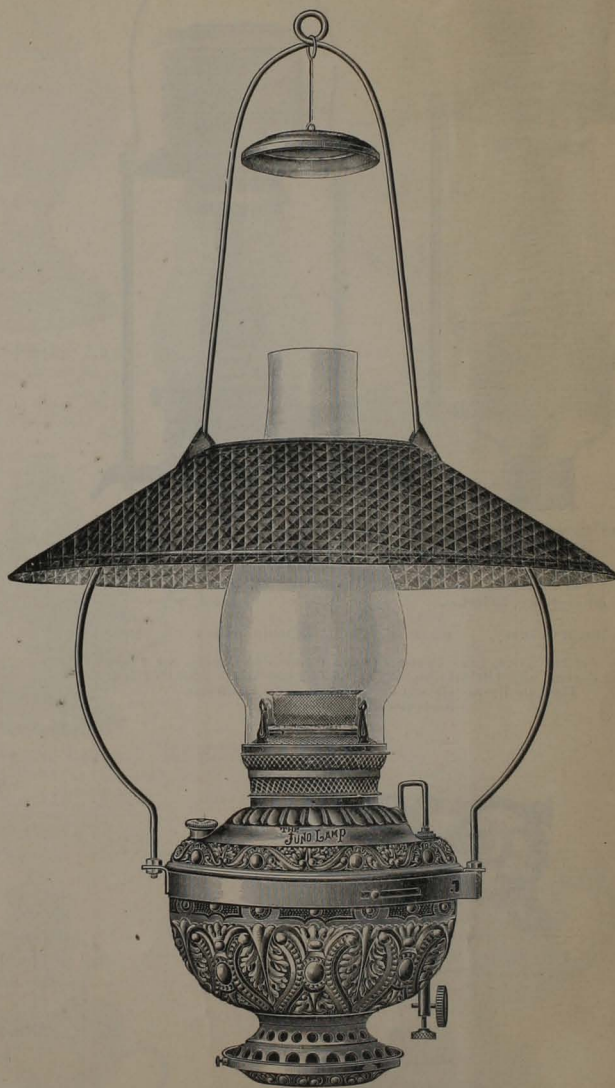


No. 163-3 J. C. Harp.

Complete with No. 3 Juno Fount, No. 3 Miller Chimney and 14 inch Plain Dome Shade as shown.

Length of Harp with Fount, 35 inches.

List Each, Polished Brass, \$6.25 Nickel Finish, \$6.75



No. 162-3 J. C. Harp.

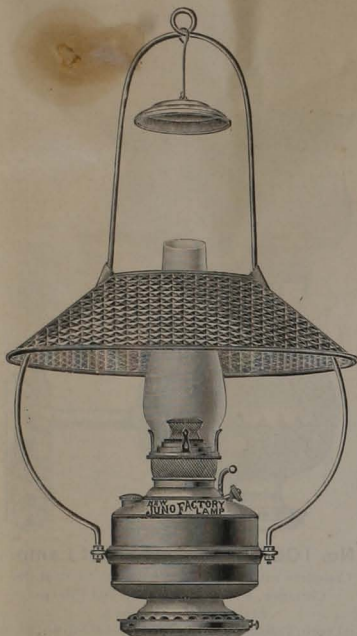
Complete with No. 3 Juno Fount, No. 3 Miller Chimney and No. 138—20 inch Tin Reflector as shown.

Length of Harp with Fount, 35 inches.

List Each, Polished Brass, \$5.50 Nickel Finish, \$6.00

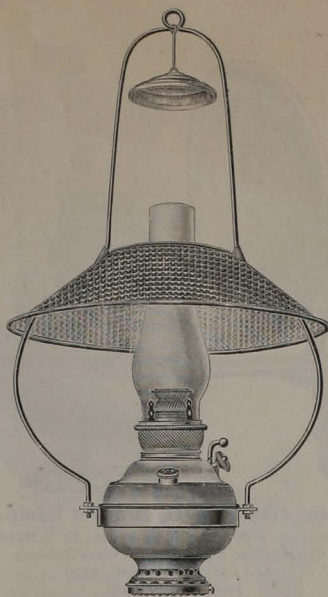


See below for Extension which may be used with these Harps if desired.



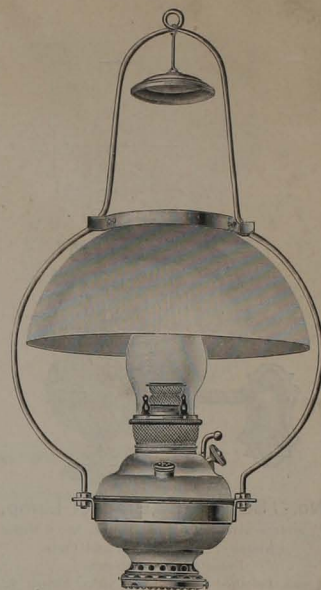
**No. 101 J. C. Harp.**

Complete with Juno Factory Fount, No. 2 Miller  
Chimney and No. 169—15 inch Tin  
Reflector as shown.  
Length of Harp with Fount, 29 inches.  
List each complete as shown,  
Brass Finish, \$3.00



**No. 228-30 J. C. Harp.**

Complete with No. 30 Juno Fount, No. 2 Miller  
Chimney and No. 169—15 inch Tin  
Reflector as shown.  
Length of Harp, with Fount, 28½ inches.  
List each complete as shown,  
Brass, \$3.00 Nickel, \$3.25



**No. 229-30 J. C. Harp.**

Complete with No. 30 Juno Fount, No. 2 Miller  
Chimney and 14 inch Plain Dome  
Shade as shown.  
Length of Harp with Fount, 28½ inches.  
List each complete as shown,  
Brass, \$3.50 Nickel, \$3.75

## Miller Smokeless Oil Heaters.

With Automatic Extinguishers.



**No. 28 Spring Extension.**

For Weights of 4 to 12 pounds.  
Length closed, 8 inches;  
extended, 44 inches.  
List each.  
Brass, \$1.88  
Nickel, 2.08  
For use with any Mammoth or  
No. 2 Fount as shown above.



**No. 390, Complete, List each, \$6.50**  
Fount holds 3¾ quarts.  
Takes No. 3 Miller Wick.  
Height (handle down), 27½ inches.  
**Frame, Black Iron, canopy, Aluminum.**  
Packed, one in a Crate.  
Gross, 20 lbs.; net, 10 lbs.  
Measurements, 13 x 13 x 27 inches.



**No. 451, Complete, List each, \$6.90**  
Fount holds 4 quarts.  
Takes No. 3 Miller Wick.  
Height (handle down), 24½ inches.  
**Black Japan Finish.**  
Packed, one in a Crate.  
Gross, 21 lbs.; net, 11 lbs.  
Measurements, 14 x 14 x 24 inches.

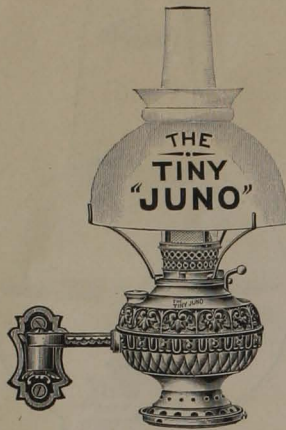


**No. 452, Complete, List, each, \$7.30**  
Fount holds 4 quarts.  
Takes No. 3 Miller Wick.  
Height (handle down), 24½ inches.  
**Full Nickel Finish.**  
Packed, one in a Crate.  
Gross, 21 lbs.; net, 11 lbs.  
Measurements, 14 x 14 x 24 inches.



**No. 460, Complete, List each, \$5.00**  
Fount holds 4½ pints.  
Takes No. 2 Miller Wick.  
Has Perforated Top.  
Height (handle down), 19 inches.  
**Full Nickel Finish.**  
Packed, one in a Crate.  
Gross, 12 lbs.; net, 5½ lbs.  
Measurements, 11 x 11 x 22 inches.

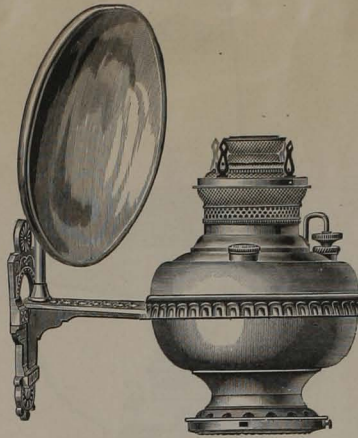
## Bracket Lamps.



**No. 180-O J. C. Bracket Lamp.**

Complete with No. 0 Juno Fount, No. 0 Miller Chimney, 6 inch Tripod and Plain Dome Shade as shown.

List each, Polished Brass, \$1.88 Nickel Finish, \$2.00  
Projection, 7 $\frac{1}{4}$  inches.



**No. 104-2 M. C. Bracket Lamp.**

Complete with No. 2 Miller Fount, No. 2 Miller Chimney and 8 inch Silvered Glass Reflector.

List each, Brass Finish, \$3.50  
Projection, 10 inches.



**No. 106-02 M. C. Bracket Lamp.**

Complete with No. 02 Miller Fount, No. 2 Miller Chimney, 5 inch Shade Ring and Crown Etched Globe as shown.

List each, Polished Brass, \$5.60 Nickel Finish, \$6.00  
Projection, 12 inches.

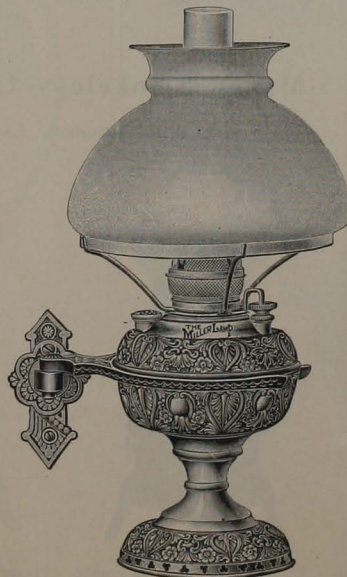
Note especially, these Brackets have OPEN Rings so as to use the regular Parlor or Table Lamps.  
The most useful Lamps in the market.



**No. 207-O M. C. Bracket Lamp.**

Complete with No. 0 Miller Parlor Lamp, No. 0 Miller Chimney, 6 inch Tripod and Plain Dome Shade.

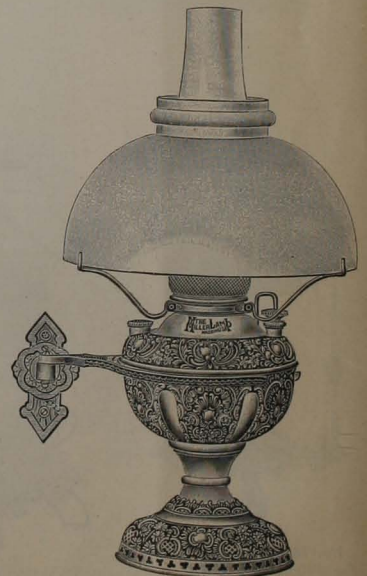
List each, Polished Brass, \$2.63 Nickel Finish, \$3.00  
Projection, 7 $\frac{1}{4}$  inches.



**No. 208-01 M. C. Bracket Lamp.**

Complete with No. 01 Miller Parlor Lamp, No. 1 Miller Chimney, 7 in Tripod and Plain Dome Shade as shown.

List each, Polished Brass, \$3.75 Nickel Finish, \$4.00  
Projection, 8 $\frac{3}{4}$  inches.



**No. 212-02 M. C. Bracket Lamp.**

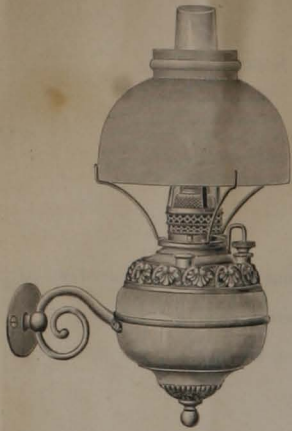
Complete with No. 02 Miller Parlor Lamp, No. 2 Miller Chimney, 10 inch Tripod and Plain Dome Shade as shown.

List each, Polished Brass, \$4.50 Nickel Finish, \$5.00  
Projection, 11 inches.

No. 207 Bracket with No. 0 Miller Hand Lamp makes a very convenient Fixture.



# Bracket Lamps.

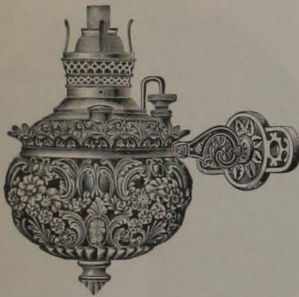


No. 317 M. Bracket Lamp with No. 0 Miller Burner, Detachable Fount, . . . List Each. \$4.50

No. 317 M.C. Bracket Lamp with No. 0 Miller Burner, Detachable Fount, complete with 6 inch Tripod, Plain Dome Shade, No. 0 Miller Chimney and Wick, . . . 5.00  
**Old Brass Finish.**  
Projection, 8½ inches.



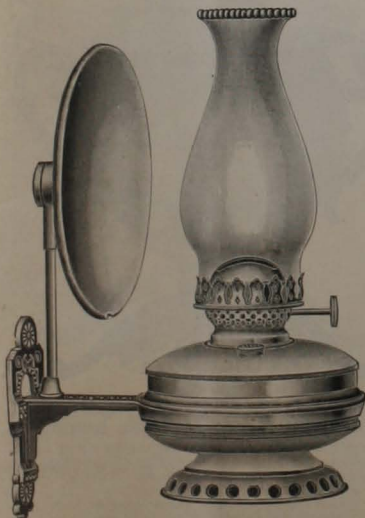
No. 7543 G. Bracket and Fount only, . . . List Each. \$1.25  
No. 7543 G.C. Bracket complete as shown, . . . 2.90  
Projection, 10½ inches.  
**Polished Brass Finish.**



No. 311 M. Bracket Lamp with No. 0 Miller Burner, Detachable Fount, . . . List Each. \$5.50  
No. 311 M.C. Bracket Lamp with No. 0 Miller Burner, Detachable Fount, complete with 6 inch Tripod, Plain Dome Shade, No. 0 Miller Chimney and Wick, . . . 6.00  
**Cast Brass Vase, Terra Cotta; remainder, Antique Brass.**  
Projection, 8¼ inches.



No. 7545 G. Bracket and Fount only, . . . List Each. \$1.35  
No. 7545 G.C. Bracket complete as shown, . . . 3.00  
Projection, 12 inches.  
**Polished Brass Finish.**



No. 17 Full Fount, with D Collar. Shown in No. 102 Bracket, complete with No. 2 Solar Burner, No. 2 Sun Chimney and 8 inch Silvered Glass Reflector. . . .  
**Brass Finish.**  
List Each, complete as shown, \$2.00



No. 7544 G. Bracket and Fount only, . . . List Each. \$1.57  
No. 7544 G.C. Bracket complete as shown, . . . 3.22  
Projection, closed, 10½ inches; opened, 18½ inches.  
**Polished Brass Finish.**



No. 7547 G. Bracket and Fount only, . . . List Each. \$1.83  
No. 7547 G.C. Bracket complete as shown, . . . 3.48  
Projection closed, 11 inches; opened, 20 inches.  
**Polished Brass Finish.**



# "Miller" Parlor Table Lamps.

With No. 2 Miller Center Draught Screw Thread Lift Burners and Detachable Founts.



NO. 2 MILLER SCREW THREAD BURNER  
WITH IMPROVED  
LIFT ATTACHMENT FOR LIGHTING.

Be sure and state Finish desired when  
ordering any Lamp shown  
on this page.



**No. 5517 M. Miller Table Lamp.**

Complete as illustrated, with 10 in. Tripod, Decorated Shade, No. 2 Miller Chimney and Wick, Each, \$6.25  
Complete with Opal Shade as on No. 5516, " 5.25  
Height to top of Burner, 11 3/4 inches.  
Plain parts, Shaded Brass; remainder  
of lamp, Antique Brass Finish.

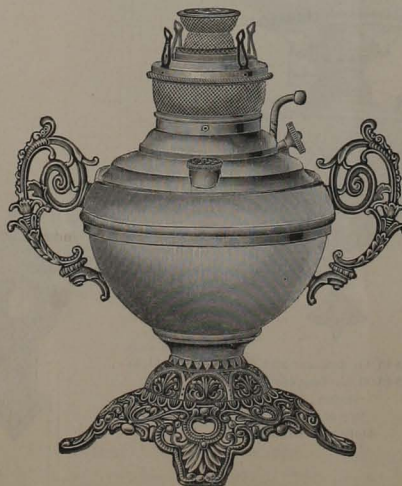


**No. 5516 M. Miller Table Lamp.**

Complete as illustrated, with 10 in. Tripod, Opal  
Shade, No. 2 Miller Chimney and Wick, Each, \$4.88  
Complete with Decorated Shade as shown on  
No. 5517 Lamp, " 5.88

Cast Openwork Base.

Height to top of Burner, 11 3/4 inches.  
Body, Ruby Shaded, Light Green Shaded, or  
Old Brass; remainder of lamp,  
Polished Gilt Finish.



**No. 4556 J. Juno Table Lamp.**

Finished in full Nickel, Old Brass or Japanese.  
Complete with 10 inch Tripod, Opal Shade, No. 2 Miller  
Chimney and Wick,

Nickel,	Old Brass,	Japanese.
Each, \$3.77	\$4.07	\$4.07



**No. 5518 M. Miller Table Lamp.**

Complete as illustrated, with 4 in. Globe Holder, 9 in.  
Etched Globe, No. 2 Miller Chimney and Wick, Each, \$6.25  
Complete with 9 inch Decorated Globe as shown  
on No. 5519 on opposite page, " 6.75

Cast Openwork Base. Cast Handles.  
Height to top of Burner, 12 inches.

Body, Ruby Shaded, Light Green Shaded, or  
Shaded Brass; remainder of lamp,  
Antique Brass Finish.



# "Miller" Parlor Table Lamps.

With No. 2 Miller Center Draught Screw Thread Lift Burners and Detachable Founts.

Shades may be used on these Lamps in place of Globes if desired.

Prices will be furnished on application.



NO. 2 MILLER SCREW THREAD BURNER WITH IMPROVED LIFT ATTACHMENT FOR LIGHTING.



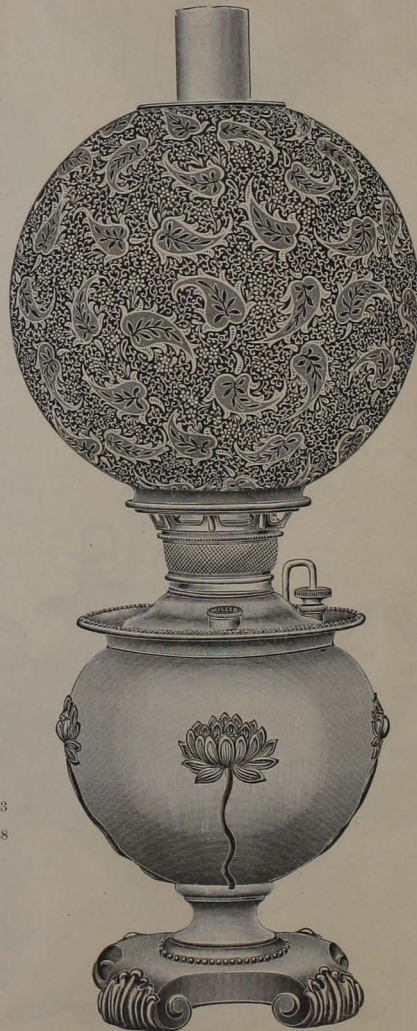
**No. 5519 M. Miller Table Lamp.**

Complete as illustrated, with 4 inch Globe Holder, 9 inch Decorated Globe, No. 2 Miller Chimney and Wick, Each, \$7.25  
Complete with 9 inch Etched Globe as shown on No. 5518 on opposite page, 6.75  
Cast Openwork Base. Cast Bead and Handles.  
Height to top of Burner, 11 3/4 inches.  
Plain parts of body, Shaded Brass or Shaded Copper; remainder of lamp, Antique Brass Finish.



**No. 5541 M. Miller Table Lamp.**

Complete, as illustrated, with 4 inch Globe Holder, 10 inch Decorated Globe, No. 2 Miller Chimney and Wick, Each, \$11.63  
Complete with 10 inch Etched Globe as shown on No. 5800, 10.88  
Height to top of Burner, 12 inches.  
Plain parts of body, Shaded Brass; remainder of lamp, Patina Brass Finish.



**No. 5800 M. Miller Table Lamp.**

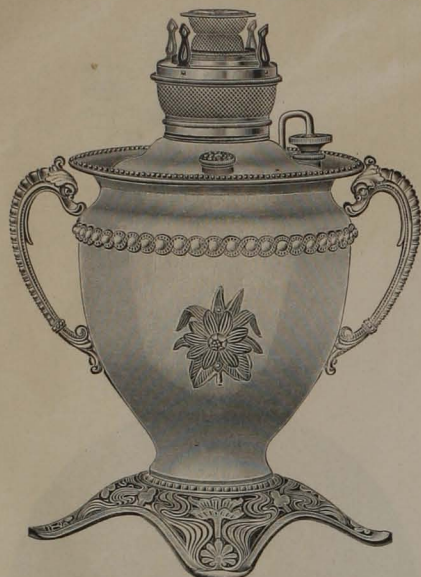
Complete, as illustrated, with 4 inch Globe Holder, 10 inch Etched Globe, No. 2 Miller Chimney and Wick, Each, \$12.25  
Complete with 10 inch Decorated Globe as shown on No. 5541, 13.00  
Spun Metal Body with Cast Overlayed Ornaments.  
Cast Metal Base.  
Height to top of Burner, 13 inches.  
Plain parts, Old Brass; remainder, Patina Brass Finish.



# "Miller" Parlor Table Lamps.

With No. 2 Miller Center Draught Screw Thread Lift Burners and Detachable Founts.

Highest Quality  
of Finish.



**No. 5822 M. Miller Table Lamp.**

Complete with 4 in. Globe Holder, 10 in. Etched  
Globe, No. 2 Miller Chimney and Wick, as on  
No. 5800, page 13, Each, \$10.25  
Complete with 10 in. Decorated Globe as on  
No. 5541, page 13, " 11.00  
Height as shown, 13 inches.  
Plain parts of body, Shaded Brass; remainder of  
Lamp, Antique Brass Finish.



**No. 5818 M. Miller Table Lamp.**

Complete with 4 in. Globe Holder, 10 in. Etched  
Globe, No. 2 Miller Chimney and Wick, as  
on No. 5800, page 13, Each, \$12.63  
Complete with 10 in. Decorated Globe, as  
on No. 5541, page 13, " 13.38  
Height as shown, 14 inches.  
Plain parts of body, Old Brass; remainder of  
lamp, Patina Brass Finish.



**No. 5839 M. Miller Table Lamp.**

Complete with 10 in. Tripod, Opal Shade,  
No. 2 Miller Chimney and Wick, as  
on No. 5516, page 12, Each, \$6.38  
Complete with 10 in. Decorated Shade,  
as on No. 5517, page 12, " 7.38  
Complete with 9 in. Etched Globe as  
on No. 5518, page 12, " 7.13  
Complete with 9 in. Decorated Globe,  
as on No. 5519, page 13, " 7.63  
Height as shown, 11 3/4 inches.  
Old Brass Antique Finish.



**No. 5851 M. Miller Table Lamp.**

Complete with 4 in. Globe Holder, 10 in. Etched  
Globe, No. 2 Miller Chimney and Wick as on  
No. 5800, page 13, Each, \$15.50  
Complete with 10 in. Decorated Globe as on  
No. 5541, page 13, " 16.25  
Height as shown, 14 1/4 inches.  
Plain parts, Shaded Brass; remainder, Patina Brass; or  
plain part of body, Carmine; remainder, Patina Brass Finish.



**No. 5855 M. Miller Table Lamp.**

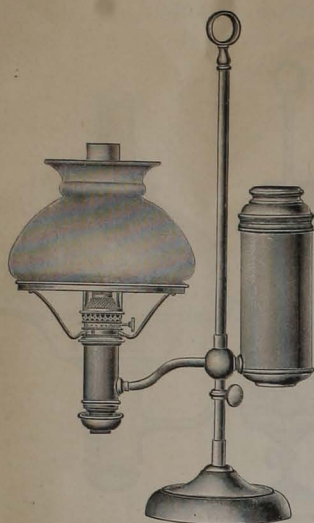
Complete with 4 in. Globe Holder, 10 in. Etched  
Globe, No. 2 Miller Chimney and Wick, as on  
No. 5800, page 13, Each, \$16.00  
Complete with 10 in. Decorated Globe as on  
No. 5541, page 13, " 16.75  
Height as shown, 12 3/4 inches.  
Patina Brass or Delphian Finish.

Packed Safely  
for  
Freight Shipment.



# Miller's "Vestal" Study Lamps; Styles, Single and Double.

With Nos. 0, 1 and 2 Center Draught Burners and Detachable Elevated Oil Founts.



**No. 0 Vestal Study Lamp.**

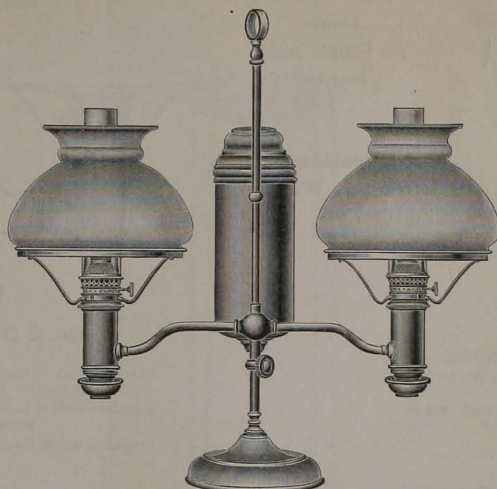
With No. 0 Burner.

Complete with 7 inch Plain Dome Shade and Chimney, Each, \$6.70  
 Complete with 7 inch Plain Green Shade and Chimney, " 7.25  
**Polished Brass, Old Brass or Nickel Finish.**  
 Height to top of Handle, 20 $\frac{1}{4}$  inches.

These Lamps can be raised or lowered to height desired, and turned, without touching the set screw.

Nos. 0, 1 and 2 Vestal Burners have Screw Thread and Lift Attachment for Lighting without removing the Chimney.

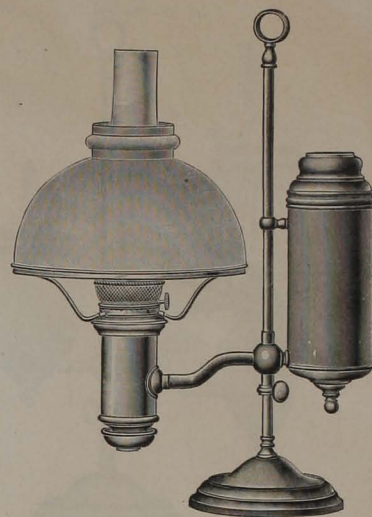
SPLENDID READING LAMPS.



**No. 0 Double Vestal Study Lamp.**

With No. 0 Burners.

Complete with 7 inch Opal Dome Shades and Chimneys, each, \$12.15  
 " " " Plain Green " " " 13.25  
**Polished Brass, Old Brass or Nickel Finish.**  
 Height to top of Handle, 21 $\frac{1}{4}$  in. Extreme Spread as shown, 19 $\frac{1}{2}$  in.



**No. 2 Vestal Study Lamp.**

With No. 2 Burner.

Complete with 10 inch Plain Dome Shade and Chimney, Each, \$10.75  
 Complete with 10 inch Plain Green Shade and Chimney, " 12.00  
**Polished Brass, Old Brass or Nickel Finish.**  
 Height to top of Handle, 20 $\frac{1}{4}$  inches.

**No. 1 Vestal Study Lamp is like above with No. 1 Burner.**

Complete with 10 inch Plain Dome Shade and Chimney, Each, \$9.50  
 Complete with 10 inch Plain Green Shade and Chimney, " 10.75  
**Polished Brass, Old Brass or Nickel Finish.**

The Vestal Burner has a Perfect Device for Adjusting the Wick.  
 Vestal Burners take Miller Chimneys.



**No. 35 Vestal Study Lamp.**

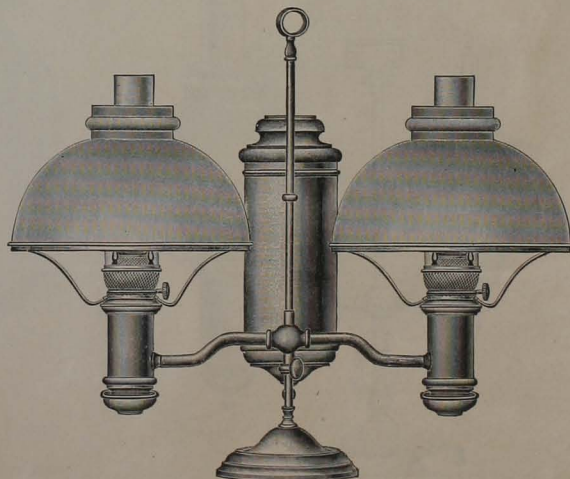
With No. 1 Burner.

Complete with 10 inch Plain Dome Shade and Chimney, as illustrated, Each, \$12.00  
 Complete with 10 inch Plain Green Shade and Chimney, " 13.25  
**Old Brass Finish.**  
 Height to top of Handle, 20 $\frac{1}{4}$  inches.

When furnished with Two Arms, Burners and Shade Rings, is

**No. 035 Double Vestal Study Lamp.**

Complete with 10 inch Plain Dome Shades and Chimneys, Each, \$17.75  
 " " " " Green " " " 20.25



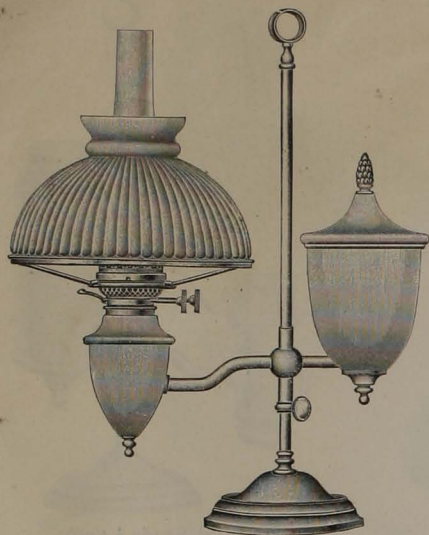
**No. 1 Double Vestal Study Lamp.**

With No. 1 Burners.

Complete with 10 inch Plain Dome Shades and Chimneys, as illustrated, Each, \$15.25  
 Complete with 10 inch Plain Green Shades and Chimneys, " 17.75  
**Polished Brass, Old Brass or Nickel Finish.**  
 Height to top of Handle, 21 $\frac{1}{4}$  in. Extreme Spread as shown, 23 $\frac{1}{2}$  in.

# Miller's "Duplex" and "Vestal" Study Lamps; Styles, Single and Double.

With Duplex and Center Draught Lift Burners and Detachable Elevated Oil Founts.



**No. 55 Duplex Study Lamp.**

With "1904 E. M. Duplex" Burner and 10 inch Shade Ring.  
Detachable Elevated Oil Fount. Height to Top of Handle, 20½ inches.

**Old Brass Finish.**

Complete with 10 inch Plain Dome Shade and Chimney, Each, \$12.00  
" 10 " " Green " " " 13.25

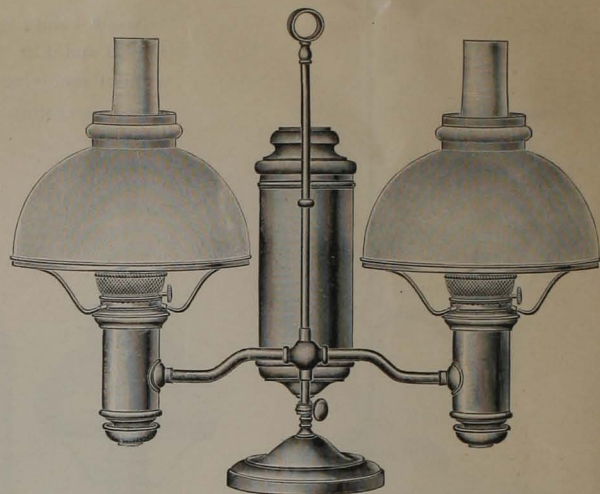
When furnished with Two Arms, Burners and Shade Rings, is

**No. 055 Double Duplex Study Lamp.**

Complete with 10 inch Plain Dome Shades and Chimneys, Each, \$17.75  
" 10 " " Green " " " 20.25

The Wick  
Raising Device  
used on all of  
Miller's Vestal  
Lamps  
is Simple and  
Perfect.

No trouble to put  
in New Wick.



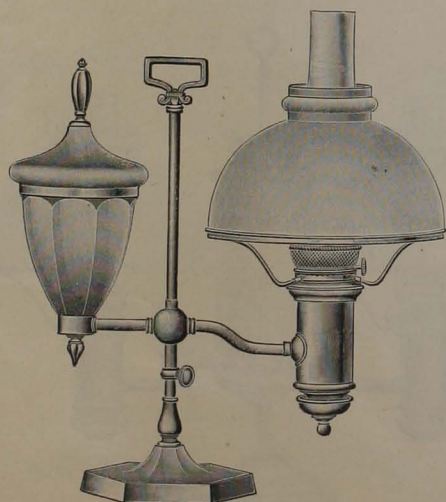
**No. 2 Double Vestal Study Lamp.**

With No. 2 Burners.

Complete with 10 inch Plain Dome Shades and Chimneys,  
as illustrated, Each, \$16.50  
Complete with 10 inch Plain Green Shades and Chimneys, " 19.00  
**Polished Brass or Nickel Finish.**

Height to top of Handle, 21¼ in. Extreme Spread as shown, 24 in.

Miller's "Vestal" Lamps take "Vestal" Wicks and Nos. 0, 1, or 2 Miller Chimneys, according to size of Burner.



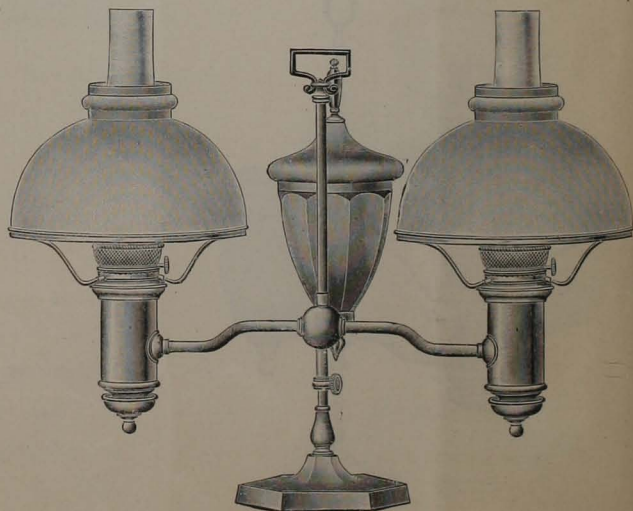
**No. 69 Vestal Study Lamp.**

With No. 2 Burner.

Complete with 10 inch Plain Dome Shade and Chimney,  
as illustrated, Each, \$17.75

Complete with 10 inch Plain Green Shade and Chimney, " 20.25  
**Old Brass Finish.**

Height to top of Handle, 19¾ inches.



**No. 069 Double Vestal Study Lamp.**

No. 2 Lift Burners. Detachable Elevated Oil Fount.

Height to top of Handle, 19¾ in. Spread outside of Shade Rings, 27 in.  
**Old Brass Finish.**

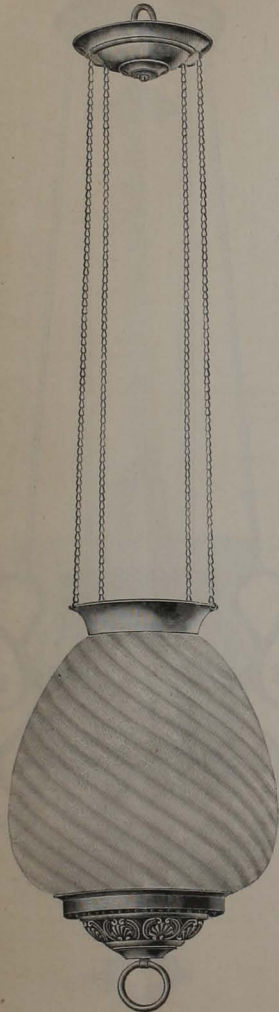
Complete with 10 inch Plain Dome Shades and Chimneys,  
as illustrated, Each, \$25.25  
Complete with 10 inch Plain Green Shades and Chimneys, " 27.75



# Hall Lamps.

Solid Brass or Bronze Metal Frames. Globes of first quality and proper weight to hold lamps in place.

Lamps are sent with Globes in Assorted Colors unless otherwise ordered.

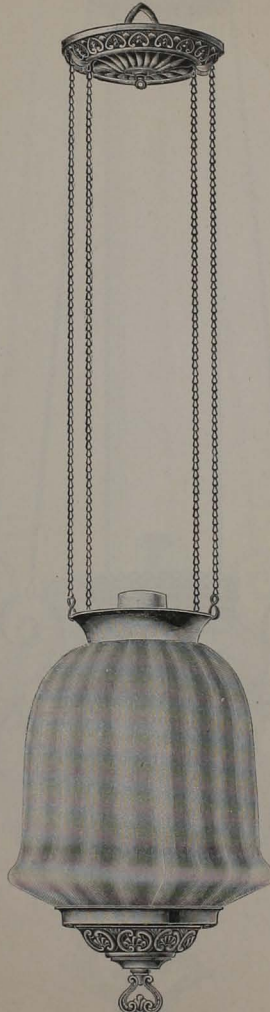


**No. 6844 Hall Lamp.**

**Brass.**

With No. 145 A Collar, Glass Fount.  
Length, 33 inches.

With Ruby, Pink Rose or Opal Globe.  
Complete with No. 0 Victor Burner, Chimney  
and Wick, Each, \$2.30

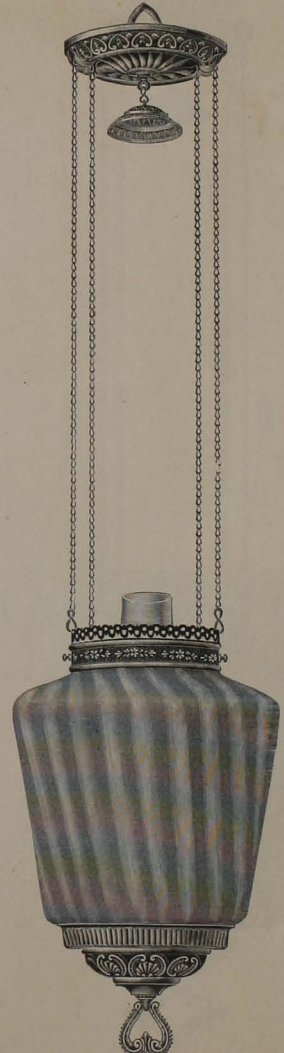


**No. 6835 Hall Lamp.**

**Bronze Metal.**

With No. 145 A Collar, Glass Fount.  
Length, 33 inches.

With Ruby, Pink Rose or Opal Globe.  
Complete with No. 0 Victor Burner, Chimney  
and Wick, Each, \$2.30



**No. 6766 Hall Lamp.**

**Bronze Metal.**

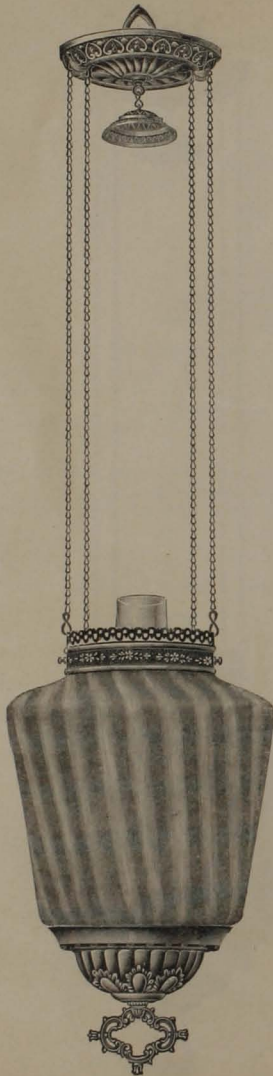
With No. 145 A Collar, Glass Fount.  
Length, 29 inches.

With Ruby or Pink Rose Globe, as shown.  
Complete with No. 0 Victor Burner, Chimney  
and Wick, Each, \$2.80

# Hall Lamps.

SOLID BRASS OR BRONZE METAL FRAMES.

All Hall Lamps are sent with Globes in Assorted Colors unless Colors are especially stated.



**No. 6843 Hall Lamp.**

**Gilt Finish.**

With No. 131 B Collar, Glass Fount.  
Length, 29 inches.

With Ruby or Pink Rose Globe.

Complete with No. 2 or B Victor Burner, Chimney  
and Wick, Each, \$3.67



**No. 6786 Hall Lamp.**

**Polished Bronze Metal.**

With No. 145 A Collar, Glass Fount.  
Length, 30 inches.

With Ruby or Pink Rose Globe.

Complete with No. 1 or A Victor Burner, Chimney,  
and Wick, Each, \$4.05



**No. 6768 Hall Lamp.**

**Polished Bronze Metal.**

With No. 131 B Collar, Glass Fount.  
Length, 32 inches.

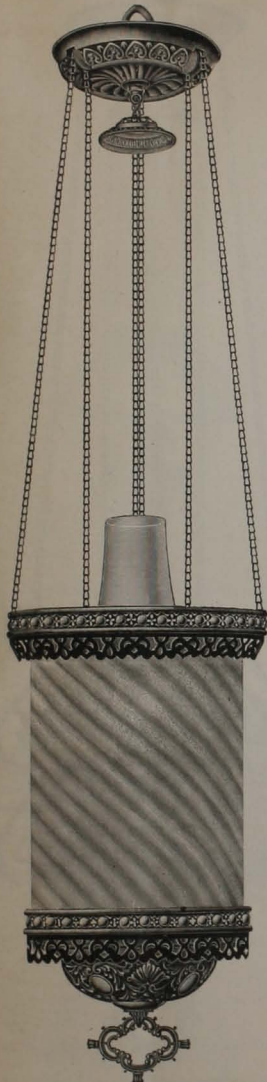
With Ruby or Pink Rose Globe, as shown.

Complete With No. 2 or B Victor Burner, Chimney  
and Wick, Each, \$4.92



# Hall Lamps.

With Polished Bronze Metal Frames. Assorted Colored Globes.



**No. 6797 Hall Lamp.**

**Polished Bronze Metal.**

With No. 153 B Collar, Glass Fount.

Length, 32 inches.

With 6 x 9 inch Flange Cylinder in Ruby or Pink Rose, Twist Pattern, or Etched Cylinder.

Complete with No. 2 or B Victor Burner, Chimney and Wick, Each, \$4.92



**No. 6822 Hall Lamp.**

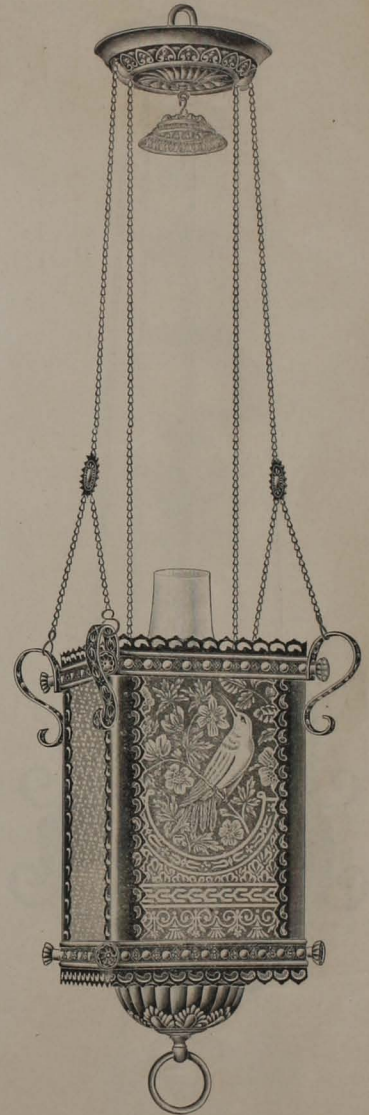
**Polished Bronze Metal.**

With No. 131 B Collar, Glass Fount.

Length, 33 inches.

With Ruby or Pink Rose Globe, as shown.

Complete with No. 2 or B Victor Burner, Chimney and Wick, Each, \$5.37



**No. 6767 Hall Lamp.**

**Polished Bronze Metal.**

With No. 131 B Collar, Glass Fount.

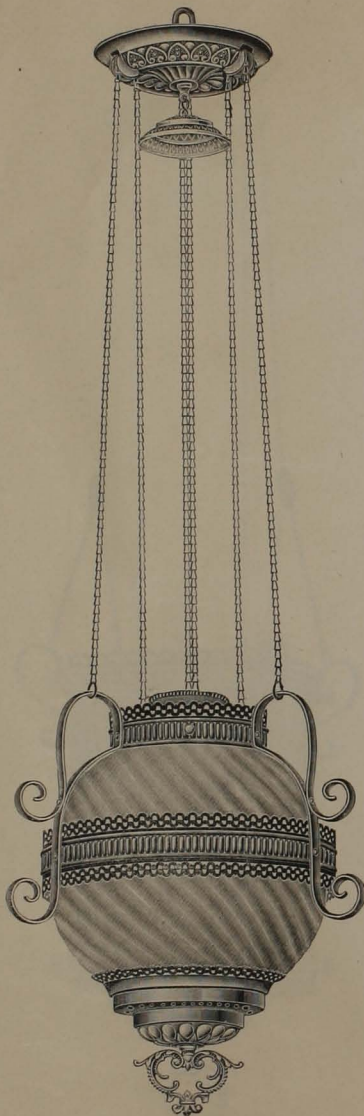
Length, 30 inches.

With 4 3/4 x 8 inch Enameled or Ruby Etched Glass.

Complete with No. 2 or B Victor Burner, Chimney and Wick, Each, \$5.17

# Hall Lamps.

Solid Brass Frames furnished in Dull Brass with Dark Relief.



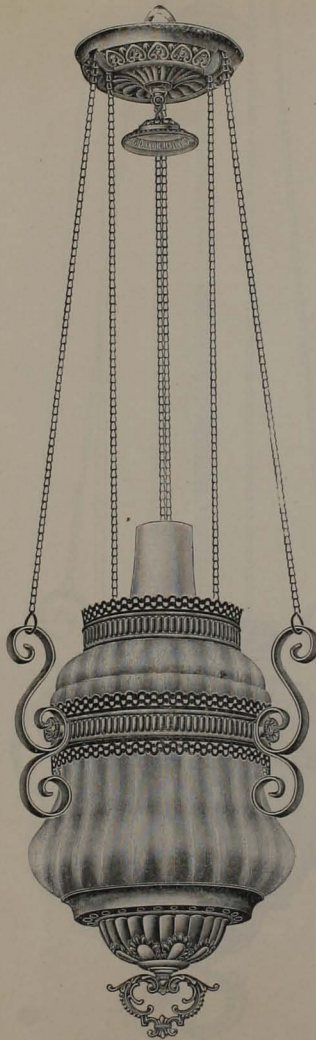
**No. 6864 Hall Lamp.**

Straps, Old Brass; remainder,  
Patina Brass Finish.

With No. 145 A Collar, Glass Fount.  
Length, 32½ inches.

With 8 inch Ruby, Pink Rose or Opal Globe.  
Twist Pattern.

Complete with No. 1 or A Victor Burner,  
Chimney and Wick, Each, \$5.07

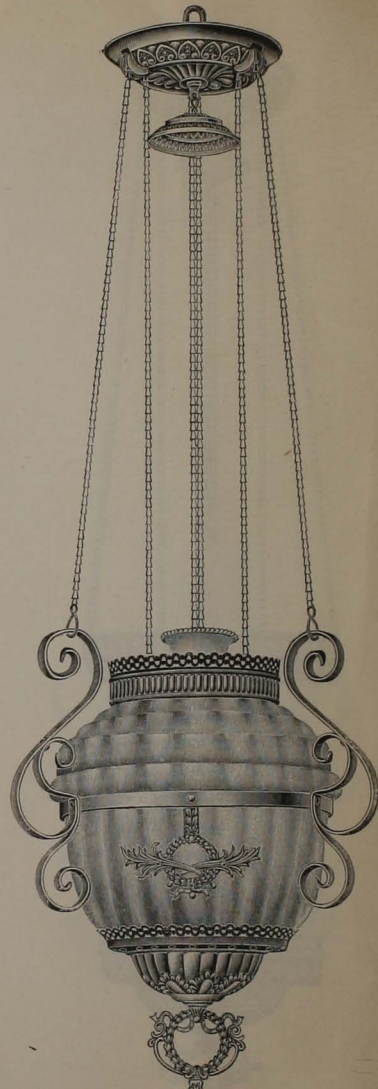


**No. 6866 Hall Lamp.**

Straps, Old Brass; remainder,  
Patina Brass Finish.

With No. 131 B Collar, Glass Fount.  
Length, 32 inches.

With Ruby or Pink Rose Globe.  
Complete with No. 2 or B Victor Burner,  
Chimney and Wick, Each, \$5.40



**No. 6867 Hall Lamp.**

Straps, Old Brass; remainder,  
Patina Brass Finish.

With No. 131 B Collar, Glass Fount.  
Length, 33 inches.

With Ruby or Pink Rose Globe.  
Complete with No. 2 or B Victor Burner,  
Chimney and Wick, Each, \$5.40



# No. 428 Assortment.

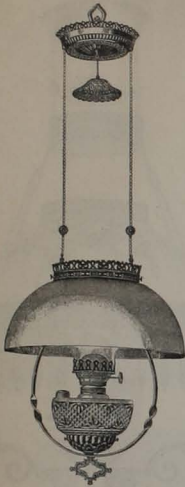
6 Library Lamps.

Polished Bronze Metal.

With Patent Automatic Spring Extensions.

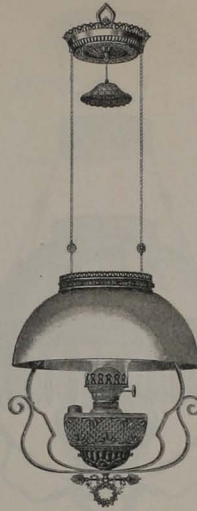
Trimmed with 14 inch Opal Dome Shades, B Collar Glass Founts, No. 2 Solar Burners (for No. 3 Wicks),  
No. 2 Sun Chimneys, and Band Lamps with 30 Prisms each.

These Lamps may be ordered individually or in Assortment of 6 Lamps.



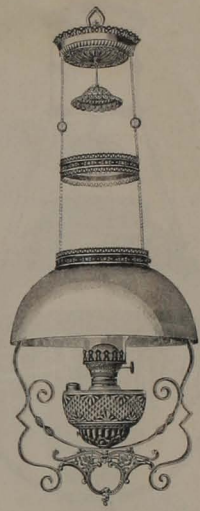
No. 428—A.

Length closed, 27 inches; extended, 63 inches.  
Complete as shown, List each, \$3.80



No. 428—B.

Length closed, 30 inches; extended, 66 inches.  
Complete as shown, List each, \$4.10



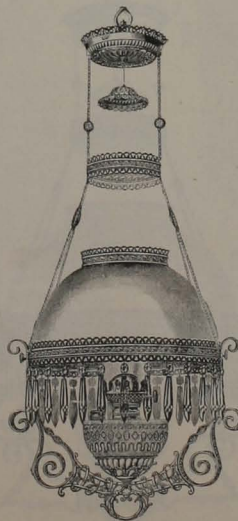
No. 428—C.

Length closed, 32 inches; extended, 68 inches.  
Complete as Shown, List each, \$4.43



No. 428—D.

Length closed, 33 inches; extended, 69 inches.  
Complete as shown, List each, \$6.53



No. 428—E.

Length closed, 35 inches; extended, 71 inches.  
Complete as shown, List each, \$7.15



No. 428—F.

Length closed, 34 inches; extended, 70 inches.  
Complete as shown, List each, \$7.72

No. 428 Assortment, 6 Lamps, complete as shown, . List per Assortment, \$33.73

# No. 427 Assortment.

6 Library Lamps.

Polished Bronze Metal.

With Patent Automatic Spring Extensions.

Trimmed with 14 inch Shades of Attractive Designs, in Assorted Decorations, with Tinted Grounds and B Collar Founts to match, with No. 2 Solar Burners (for No. 3 Wicks and No. 2 Sun Chimneys) and 30 Prisms on Bands.

These Lamps may be ordered individually, or in Assortment of 6 Lamps.



No. 427-A.

Length closed, 30 inches; extended, 66 inches.  
Complete as shown, List each, \$7.32



No. 427-B.

Length closed, 33 inches; extended, 69 inches.  
Complete as shown, List each, \$7.68



No. 427-C.

Length closed, 34 inches; extended, 70 inches.  
Complete as shown, List each, \$7.88



No. 427-D.

Length closed, 35 inches; extended, 71 inches.  
Complete as shown, List each, \$8.14



No. 427-E.

Length closed, 33 inches; extended, 69 inches.  
Complete as shown, List each, \$8.32



No. 427-F.

Length closed, 34 inches; extended, 70 inches.  
Complete as shown, List each, \$8.50

No. 427 Assortment, 6 Lamps, complete as shown, - List per Assortment, \$47.84



# Library Lamps.

With No. 2 Center Draught Screw Thread Lift Burners and Detachable Founts.

Always  
state  
which  
Shade  
is  
wanted,  
Plain Opal,  
or  
Decorated.



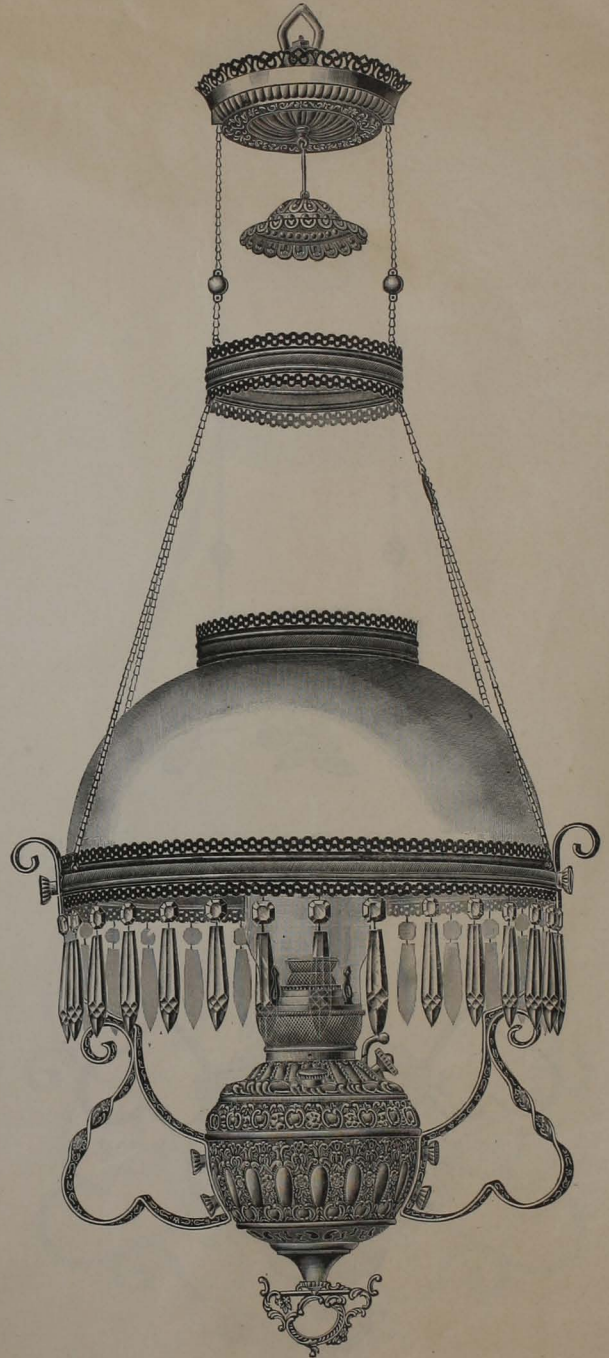
**No. 08432 J. Juno Library Lamp.**

Polished Brass.

Embossed Metal Vase. No. 2 Screw Thread Lift Burner.  
Detachable Fount. Patent Automatic Spring Extension.

Length closed, 33 inches; extended, 69 inches.

Complete as shown, Each, \$6.24  
" with Decorated Shade, " 7.40



**No. 08438 J. Juno Library Lamp.**

Polished Brass.

Embossed Metal Vase. No. 2 Screw Thread Lift Burner.  
Detachable Fount. 14 inch Band Pierced for 30 Prisms.  
Patent Spring Extension. Length closed, 37 inches; extended, 73 inches

Complete as shown, Each \$8.84  
" with Decorated Shade, " 9.96

# Decorated Library Lamps.

With Center Draught Burners. Vases and Shades Decorated to match.



No. 08349 J. Juno Library Lamp.

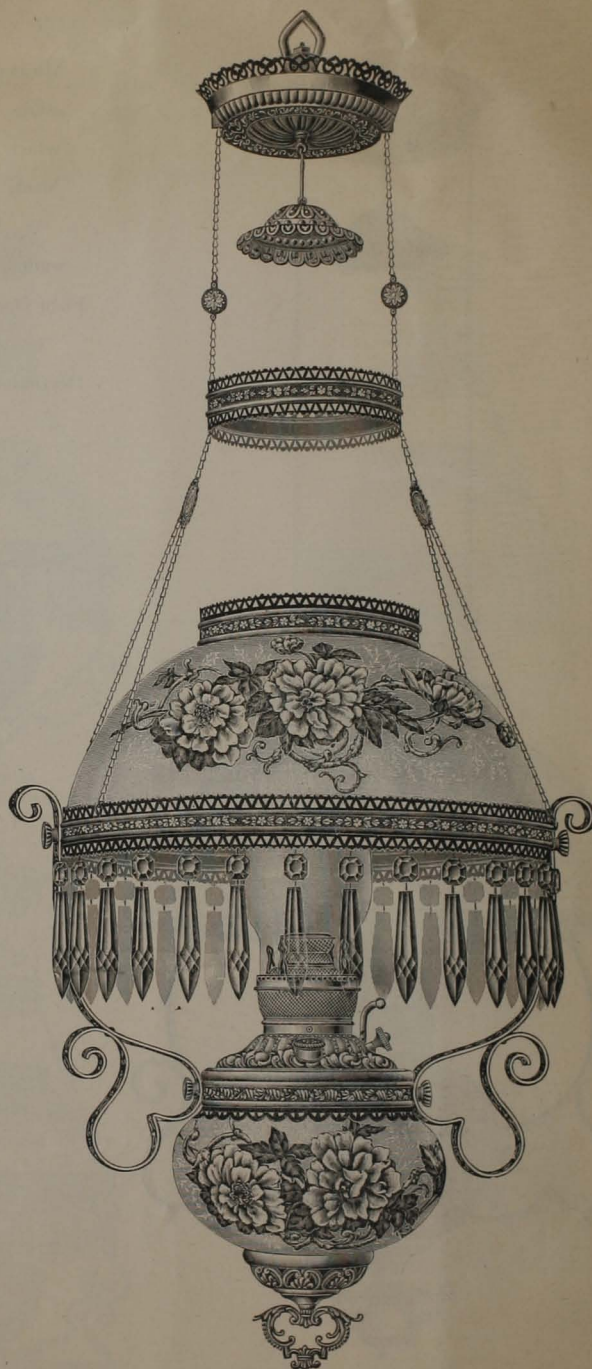
Bronze Metal.

No. 2 Screw Thread Lift Burner. Detachable Metal Fount.

Patent Automatic Spring Extension.

Length closed, 35 inches; extended, 71 inches

Complete as shown, Each, \$7.00



No. 08221 J. Juno Library Lamp.

Bronze Metal.

No. 2 Screw Thread Lift Burner.

Detachable Metal Fount. 14 inch Band Pierced for 30 Prisms.

Length closed, 38 inches; extended, 74 inches.

Complete as shown, Each, \$9.70



# Library Lamps.

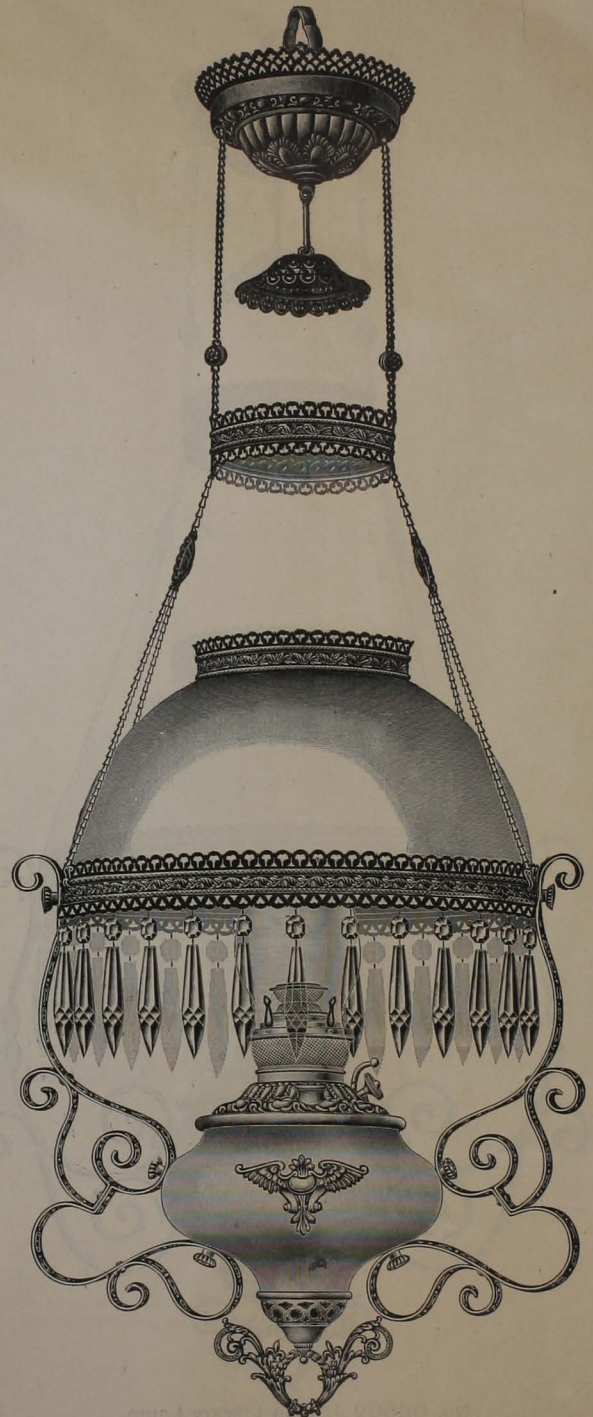
With Center Draught Screw Thread Lift Burners.



**No. 08353 J. Juno Library Lamp.**

Polished Bronze Metal.

No. 2 Burner. Detachable Metal Fount. 14 inch Band Pierced for 30 Prisms.  
Patent Spring Extension. Length closed, 39 inches; extended, 75 inches.  
Complete as shown, Each, \$11.15



**No. 08443 J. Juno Library Lamp.**

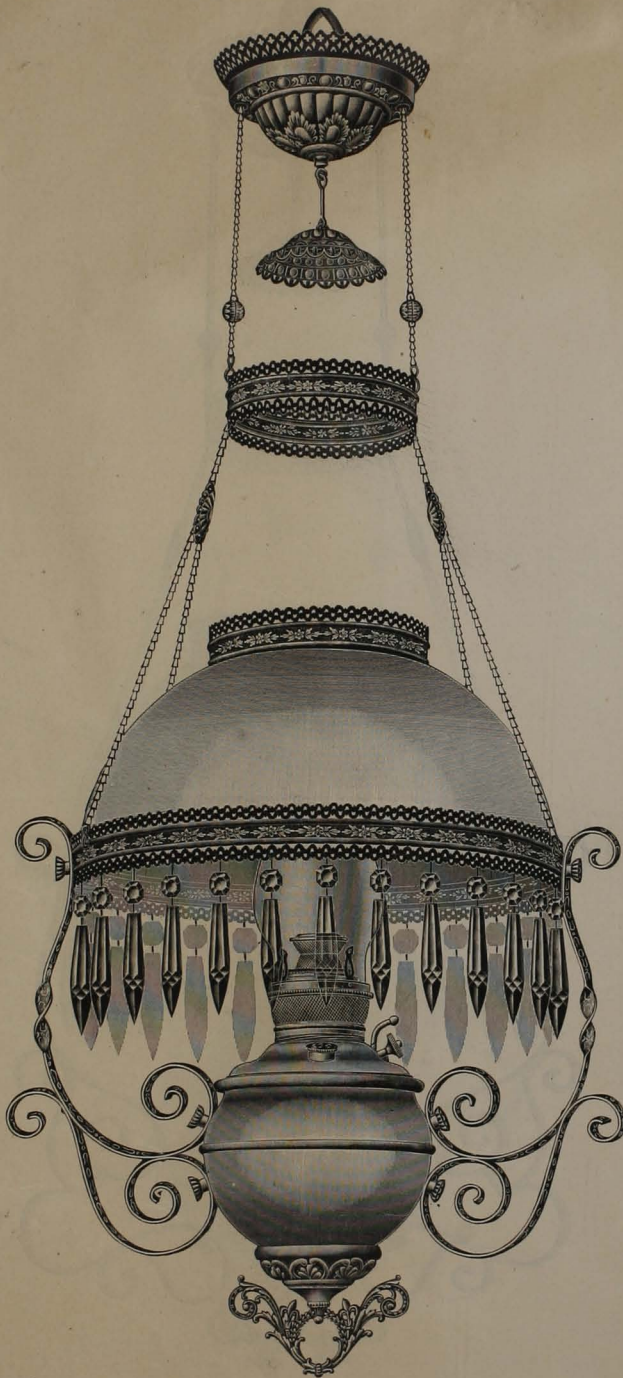
Plain parts of vase, Ionian Green or Ionian Red; ornaments, Gilt; remainder of lamp, Polished Bronze Metal.

No. 2 Burner. Detachable Fount. 14 inch Band Pierced for 30 Prisms.  
Patent Spring Extension. Length closed, 39 inches; extended, 75 inches  
Complete as shown, Each \$11.82  
" with Decorated Shade, " 12.94



# Library Lamps.

With Spring Extensions and Center Draught Lift Burners.



**No. 08509 J. Juno Library Lamp.**  
Vase, Bright Shaded Brass; remainder of Lamp,  
Polished Gilt Finish.

No. 2 Burner. Detachable Fount. 14 inch Band Pierced for 30 Prisms.  
Patent Spring Extension. Length closed, 38 inches; extended, 74 inches.  
Complete as shown, Each, \$9.53  
" with Decorated Shade, " 10.65



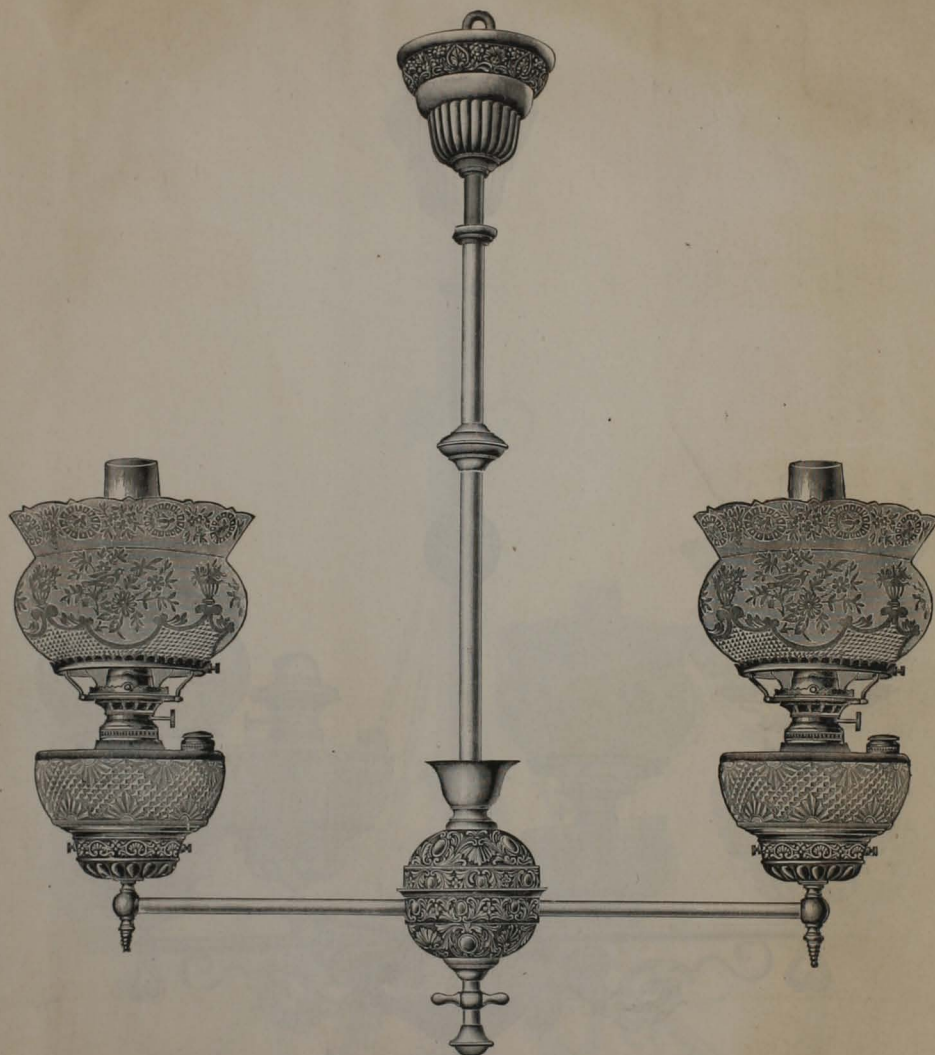
**No. 08510 J. Juno Library Lamp.**  
Vase and cast bead, Patina Brass; remainder of Lamp,  
Polished Gilt Finish

No. 2 Burner. Detachable Fount. 14 inch Band Pierced for 30 Prisms.  
Patent Spring Extension. Length closed, 38 inches; extended, 74 inches.  
Complete as shown, Each, \$10.90  
" with Decorated Shade, " 12.00



## Extension Chandelier, with B Collar Glass Founts.

Shown Complete with No. 2 Favorite Lift Burners, 5 inch Combination Shade Rings, Crown Etched Globes and No. 2 Sun Hinge Chimneys.



	—LIST EACH—			
	2 Lights.	3 Lights.	4 Lights.	6 Lights.
No. 9020 G. Chandelier and Founts only,	\$8.70	\$10.78	\$12.86	\$17.03
No. 9020 G. C. Chandelier complete as shown,	12.00	15.73	19.46	26.93

Length closed, 34 inches. Spread, outside of Founts, 32 inches.

Polished Bronze or Polished Brass Finish.

## Extension Chandelier, with B Collar Glass Founts.

Shown complete with No. 2 Favorite Lift Burners, 5 inch Combination Shade Rings, Crown Etched Globes and No. 2 Sun Hinge Chimneys.



	LIST EACH.			
	2 Lights.	3 Lights.	4 Lights.	6 Lights.
No. 9043 G. Chandelier and Founts only,	\$9.64	\$11.93	\$14.22	\$18.80
No. 9043 G.C. Chandelier complete as shown,	12.94	16.88	20.82	28.70

Length closed, 36 inches. Spread outside of Founts, 31 inches.  
Center Shell, Columbian Green or Shaded Ruby; remainder of  
Chandelier, Polished Bronze Metal.



# Extension Chandelier, with B Collar Founts.

Shown complete with No. 2 Favorite Lift Burners, 5 inch Combination Shade Rings, Crown Etched Globes and No. 2 Sun Hinge Chimneys.



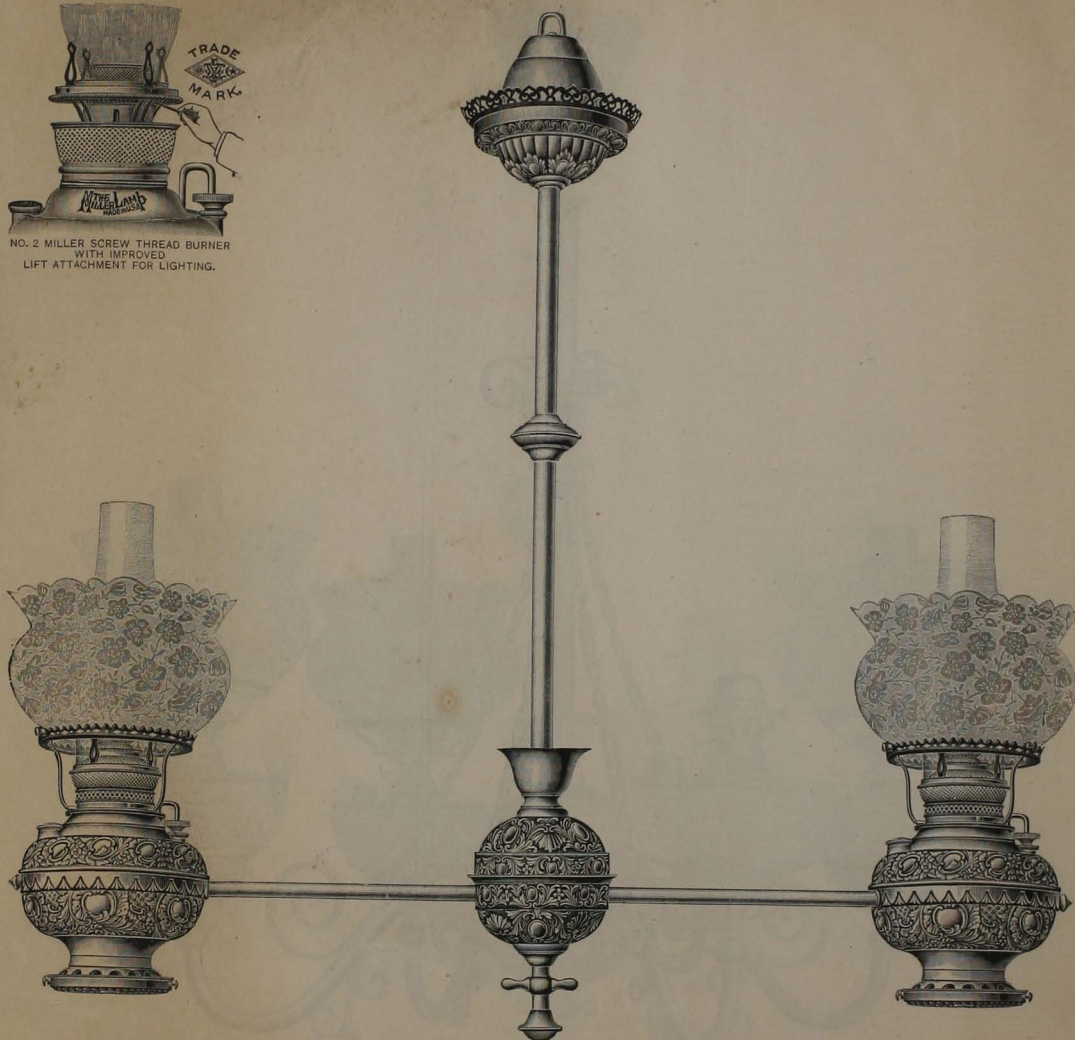
	LIST EACH.			
	2 Lights.	3 Lights.	4 Lights.	6 Lights.
No. 9047 G. Chandelier and Founts only,	\$11.00	\$13.75	\$16.50	\$22.00
No. 9047 G.C. Chandelier complete as shown,	14.30	18.70	23.10	31.90
Length closed, 36 inches. Spread, outside of Founts, 32 inches.				
Polished Bronze Metal, with center shell in Columbian				
Green; or Shaded Ruby.				

# Extended Chandelier, for Center Draught Founts.

Shown complete with No. 02 Miller Founts, No. 2 Miller Chimneys, 5 inch Shade Rings and Crown Etched Globes.



NO. 2 MILLER SCREW THREAD BURNER  
WITH IMPROVED  
LIFT ATTACHMENT FOR LIGHTING.



No. 0916, Chandelier without Founts,

No. 0916-02 M. Chandelier with No. 02 Miller Founts, No. 2 Lift Burners,

No. 0916-02 M.C. Chandelier complete as shown,

Length closed, 34 inches. Spread, 32 inches.

Polished Bronze or Polished Brass Finish.

LIST EACH.			
2 Lights.	3 Lights.	4 Lights.	6 Lights.
\$8.75	\$10.83	\$12.92	\$17.08
14.00	18.70	23.33	32.75
16.60	22.60	28.53	40.55



ounts.

ESPECIAL

HALLS.

Shown complete with No. 02 Miller Founts, No. 2 Miller Penholders, No. 1 Miller Rings and Crown Etched Globes.



	LIST EACH			
	2 Lights.	4 Lights.	6 Lights.	8 Lights.
No. 0900 Chandelier without Founts, . . . . .	\$16.80	\$25.25	\$33.50	\$42.25
No. 0900-02 M. Chandelier with No. 02 Miller Founts, No. 2 Lift Burners, . . . . .		35.25	48.80	62.25
No. 0900-02 M.C. Chandelier complete as shown, . . . . .	24.40	40.45	56.60	72.65

**Polished Brass Finish.**

# INDEX.

Catalogue No. 97.



## Burners for Kerosene or Coal Oil.

	Page.
Apollo Duplex	1
Boudoir	2
" Globe Holder, 2 3/4 inch	2
" Burner Chimney (Princess)	2
Duplex "1904 E. M."	2
Favorite Improved	1
Solar, Nos. 1 and 2	2
Simplex	1
Stellar	1
Slip or Nobby	1
Sun Hinge, Excelsior	1
Tubular Lantern	1
Venus	1
Victor	1
Zenith No Chimney	1

## Burners for Fluid and Alcohol.

	Page.
Coach Lamp	2
Cup Ratchet	2
Union "	2
Vesta	2

## Lamps.

	Page.
Acme Lamp	4
Boston Hand Lamp	5
Brass " " Nos. 1 and 2	5
" " " No. 25	5
" Table Lamp, No. 2009	6
" Cotton States Lamp	5
" Non-Exp. Hand Lamp No. 1	4
Elfin Lamp	4
Monarch Hand Lamp	5
Mill Fount No. 17	11
Nobby Hand Lamp	4
Pearl " "	4
Stellar " "	5
Tin, No. 1 Non-Exp. Hand Lamp	4

## Miscellaneous.

	Page.
Collars, Lamp	3
" Reducing	3
Expanding Screws	3
Feeder Caps and Collars	3
" Screws and Hoops	3
Hoops, Solid	3

## Miller Oil Heaters.

No.	Page.
390	9
451	9
452	9
460	9

## Out-Door Lamps and Lanterns Street, Porch, Etc.

No.	Page.
52 Juno Station Lamp	7
57 Tubular Street Lamp	7
58 " Portable Lantern	7
153 M. Street Lamp	7
155 M. Portable Lantern	7
3 Bracket for Street Lamps	7
8 inch Square Lantern	7
Tempest	3
Victoria	3

## Center Draught Lamps and Founts.

No.	Page.
0 Tiny Juno Hand Lamp	6
0 Tiny Juno Fount	10
0 Juno Home Hand Lamp	6
0 Miller	6
0 Miller Parlor Lamp	10
0 Tiny Juno Parlor Lamp	6
1 Juno Parlor Lamp	6
01 Miller	10
02 " "	10
2 " Fount	10
02 " "	10
30 Juno Parlor Lamp	6
4556 J. Table Lamp	12
5516 M. " "	12
5517 M. " "	12
5518 M. " "	12
5519 M. " "	13
5541 M. " "	13
5800 M. " "	13
5818 M. " "	14
5822 M. " "	14
5839 M. " "	14
5851 M. " "	14
5855 M. " "	14

## Harps, Brackets & Extensions.

No.	Page.
28 Extension	9
101 Harp	9
104 Bracket	10
106 " "	10
162 Harp	8
163 " "	8
180 Bracket	10
207 " "	10
208 " "	10
212 " "	10
228 Harp	9
229 " "	9

## Harps, Brackets & Extensions. Continued.

No.	Page.
311 Bracket Lamp	11
317 " "	11
7543 " "	11
7544 " "	11
7545 " "	11
7547 " "	11

## Hall Lamps.

No.	Page.
6766 Hall Lamp	17
6767 " "	19
6768 " "	18
6786 " "	18
6797 " "	19
6822 " "	19
6835 " "	17
6843 " "	18
6844 " "	17
6864 " "	20
6866 " "	20
6867 " "	20

## Library Lamps.

No.	Page.
427 Assortment	22
428 " "	21
08221 Library Lamp	24
08349 " "	24
08353 " "	25
08432 " "	23
08438 " "	23
08443 " "	25
08509 " "	26
08510 " "	26

## Extension Chandeliers.

No.	Page.
0900 Chandelier	31
0916 " "	30
9020 " "	27
9043 " "	28
9047 " "	29

## Study Lamps.

No.	Page.
0 Vestal, Single	15
0 " Double	15
1 " Single	15
1 " Double	15
2 " Single	15
2 " Double	16
35 " Single	15
035 " Double	15
55 Duplex, Single	16
055 " Double	16
69 Vestal, Single	16
069 " Double	16