

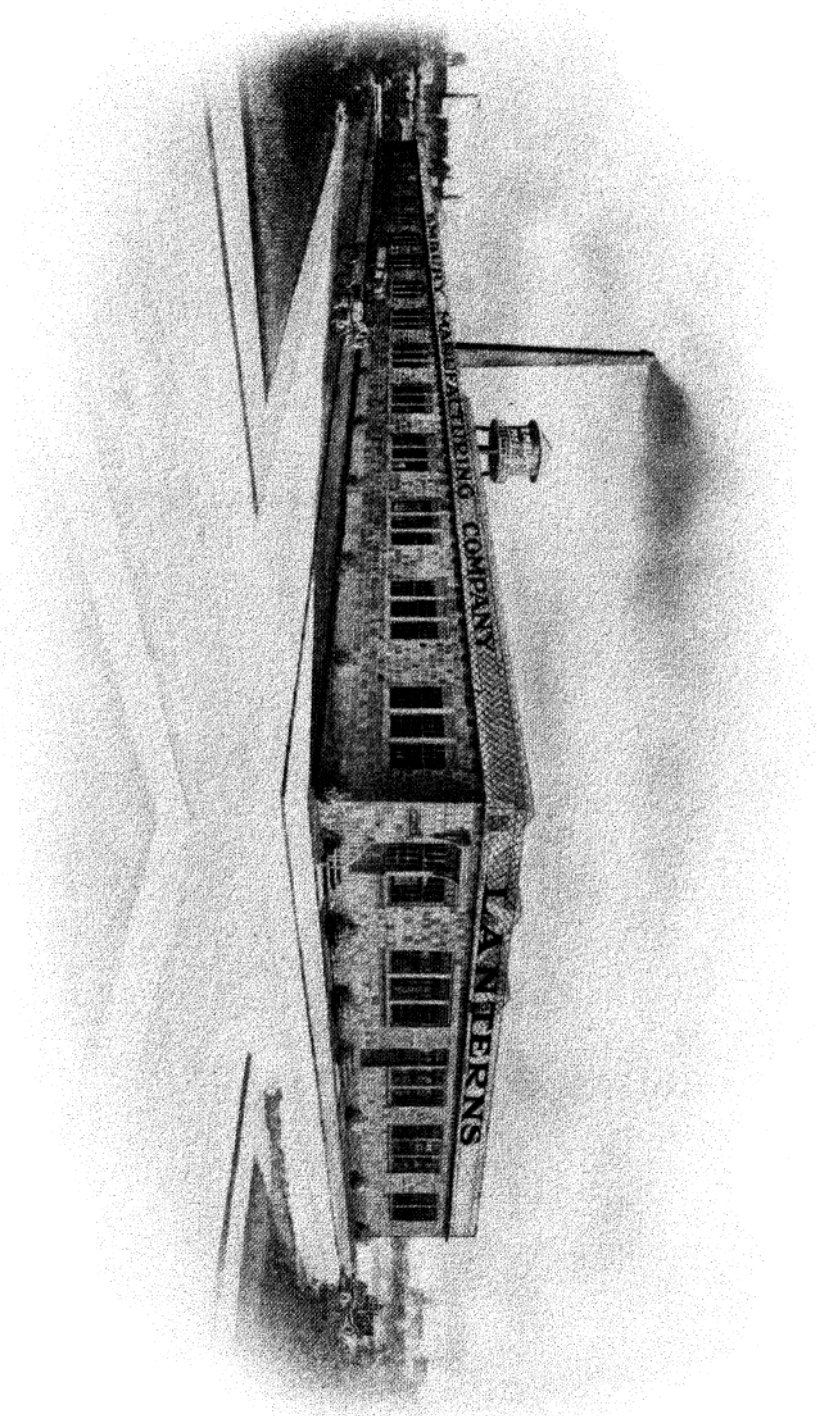
ILLUSTRATED
CATALOG

Camlox & Windsor
Lanterns

EMBURY
MANUFACTURING
COMPANY

WARSAW, N.Y.

THE NEW "EMBURY" PLANT AT WARSAW, NEW YORK
LENGTH 400 FEET
HEIGHT 100 FEET



FOREWORD



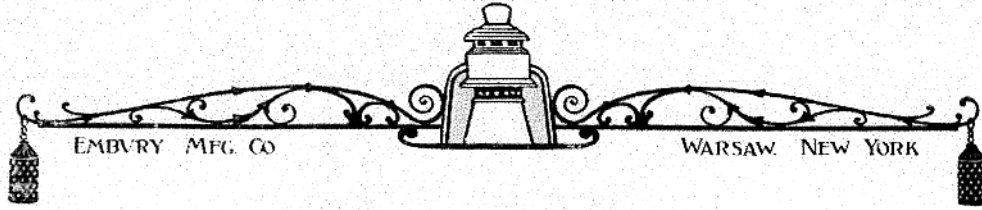
UPWARD and upward tendencies of the trade, and our continued efforts along progressive lines, are responsible for this our latest illustrated catalog of the "Camlox" and "Windsor" lines of lanterns and lamps. "Embury Quality" is recognized and holds the trade; it insures the "come-back" order that leads to a steady and continuous growth in business.

We are now located in our new factory at Warsaw, N. Y., built especially for this line of business, and equipped for making lanterns and lamps at the minimum cost of production.

As we built our plant—so far as we know the most complete lantern factory in existence—so do we make our lamps and lanterns. Both are the result of able, painstaking endeavor on the part of skilled designers, coupled with the use of the best materials obtainable.

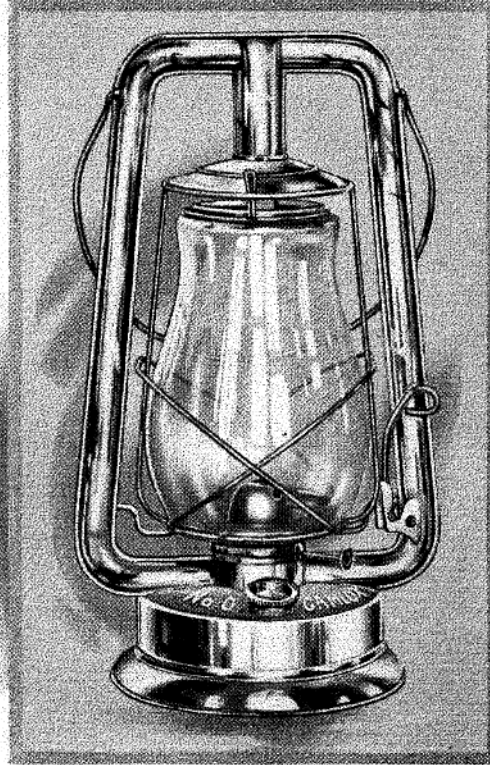
Our products are guaranteed as represented. All we ask is an impartial trial. We know that our goods will put new life into your lantern and lamp line by giving it style, variety and quality.

EMBURY MANUFACTURING COMPANY
WARSAW, NEW YORK



No. 0 Camlox

A HANDSOME INSIDE LIFT HOT BLAST LANTERN—STANDARD SIZE



CAMLOX Lanterns are of high value. They have earned an enviable reputation for themselves. The above is our regular No. 0 Hot Blast style. They can be filled, lighted, regulated and extinguished without removing the globe. The strongest and most convenient hot blast lantern made.

CONSTRUCTION

Oil fount is drawn in one piece and retinned. Will burn 30 hours when filled.

The bottom is double seamed to the fount, insuring long, hard wear.

Of graceful lines and standard size. Height of lantern 13 $\frac{1}{4}$ inches.

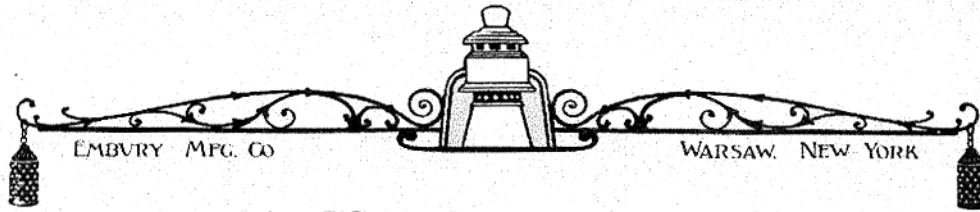
Two pieced stamped tubes and made of IXAA quality of tin. Thoroughly tested at factory.

Throws a strong, steady, bright light and is easy to operate.

Supplied with No. 1 Burner, five-eighths inch Wick and No. 0 Globe.

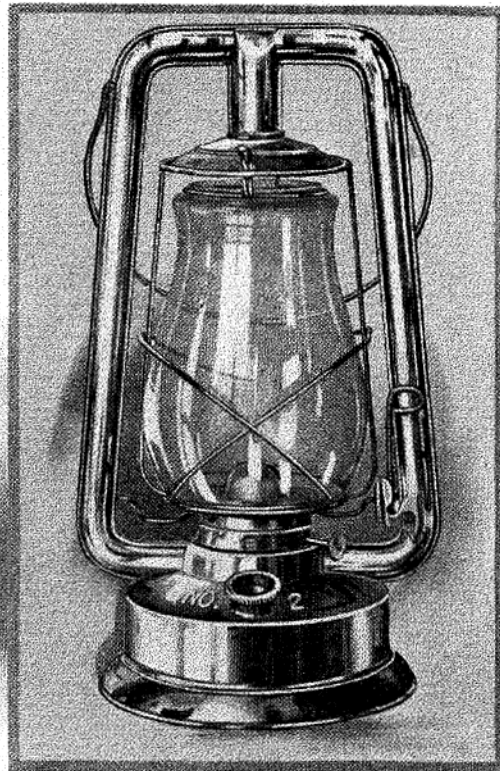
Figure 210—No. 0 Camlox, Plain Globe	\$6.40 Per Dozen	6.50
" 210E—No. 0 Camlox, Enameled, Plain Globe	6.90 " " " "	7.50
" 211—No. 0 Camlox, Ruby Globe	8.10 " " " "	8.50

Packed 1 dozen in a case. Average weight with case, 36 lbs.
 When packed in $\frac{1}{2}$ dozen cases an additional charge of ten cents per dozen, net, is made.
 Average weight, $\frac{1}{2}$ dozen in a case, 18 lbs.



No. 2 Camlox

INSIDE LIFT HOT BLAST LANTERN WITH LARGE FOUNT—STANDARD SIZE



AN EXACT counterpart of our No. 0 Camlox on opposite page, excepting that it is made with a larger oil fount and fitted with a No. 2 Burner. Has no equal as a light-giver, oil-saver, and for handling and convenience in use.

CONSTRUCTION

A large, capacious oil fount, adding to the length of its lighting service.

Requires less frequent filling. Will burn, when filled, uninterruptedly for 35 hours.

Two pieced stamped tubes and made of IXAA quality of tin. Height of lantern, 13¾ inches.

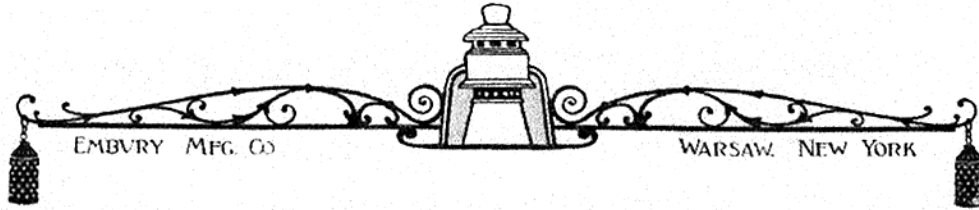
Oil fount is drawn in one piece and retinned. Thoroughly tested at factory.

The bottom is double seamed to the fount, insuring long, hard wear.

Supplied with No. 2 Hot Blast Burner, one inch Wick and No. 0 Globe.

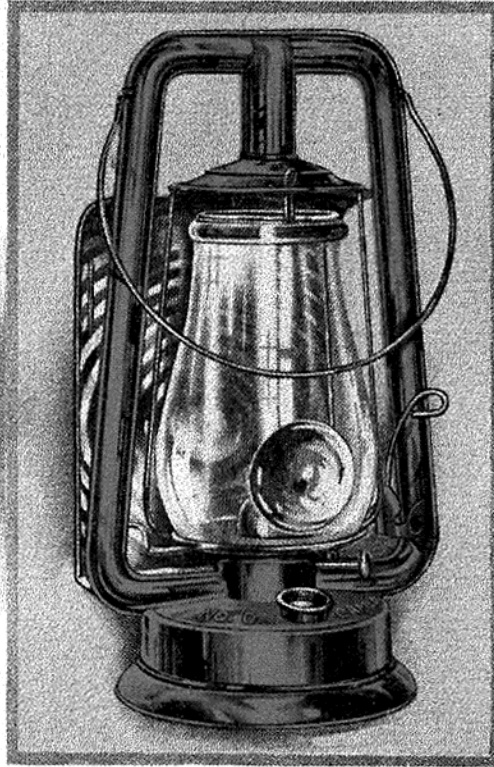
Figure 220—No. 2 Camlox, Plain Globe \$8.70 Per Dozen ^{8.50}

Packed 1 dozen in a case. Average weight with case, 38 lbs.



No. 0 Camlox Dash

ENAMELED OR PLAIN HOT BLAST DASH, INSIDE LIFT—STANDARD SIZE



IN our No. 0 Camlox Hot Blast Dash are embodied the most salient features of modern construction, plus our special improvements, which insure greatest efficiency and service. Of thorough, solid construction. Made to easily withstand successfully the constant wear and tear of rough riding vehicles.

CONSTRUCTION

Reflector extra strong and heavily wired to resist abuse. No raw edges.

Of tubular construction and easy working parts throughout. Has inside lift.

Can be filled, lighted, regulated and extinguished without removing the globe.

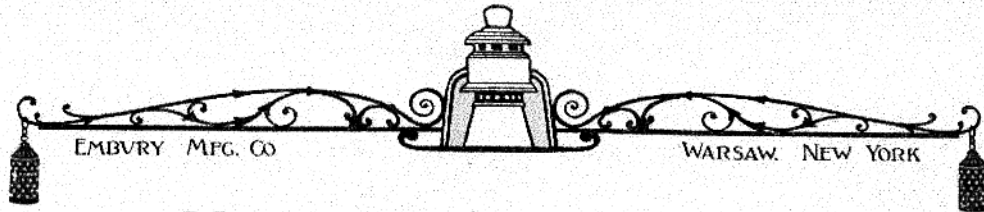
Your choice of bull's eye or plain globe, red enamel or plain tin. All lamps thoroughly tested.

Gives a most powerful reflected light under most adverse conditions. Will burn 30 hours.

Supplied with No. 1 Burner, five-eighths inch Wick and No. 0 Globe.

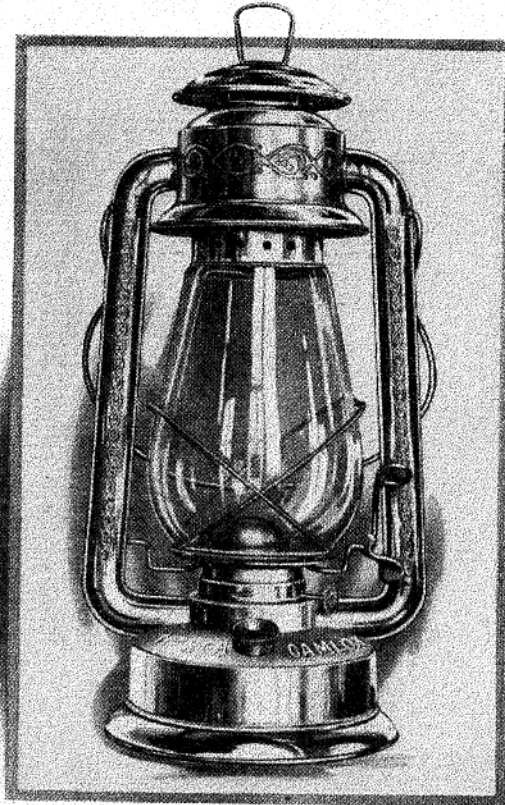
Figure 212—No. 0 Camlox Dash, Plain Tin, Plain Globe	\$8.75	Per Dozen	9.00
.. 213—No. 0 Camlox Dash, Plain Tin, B. E. Globe	9.25	" "	9.50
.. 214—No. 0 Camlox Dash, Enameled, Plain Globe	9.25	" "	9.50
.. 215—No. 0 Camlox Dash, Enameled, B. E. Globe	9.75	" "	10.00

Packed $\frac{1}{2}$ dozen in a case. Average weight with case, 25 lbs.



No. 2 Camlox Cold Blast

LEADER OF ITS CLASS, WITH NEW PATENT INSIDE LIFT—STANDARD SIZE



A HANDSOME tubular Lantern of perfect combustion. Made and tested under most exacting conditions. Has our new inside Lift—patented—and other practical features. Will stand hard usage and perform every requirement with greater efficiency under adverse conditions than any other known make.

CONSTRUCTION

Bottoms are concave and double seamed to fount, assuring rigidity for long service. 10 C. P. light.

IXAA quality of tin used. Oil fount drawn in one piece and retinned. Two-piece stamped tubes.

Can be filled, lighted, regulated and extinguished without removing the globe. Factory tested.

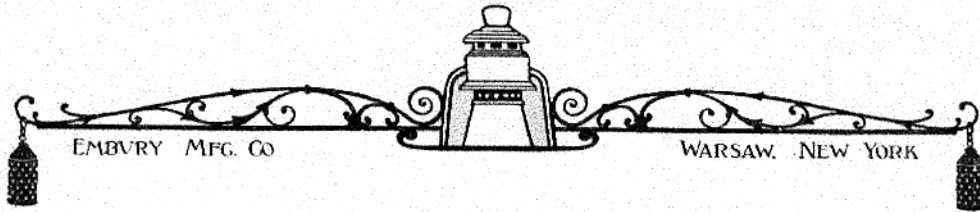
The Camlox Cold Blast will hold its brilliant light-giving power against the severest wind tests.

Height of lantern 15 inches. Capacity of oil fount when filled sufficient to last 35 hours.

Fitted with No. 2 Cold Blast Burner, one inch Wick and No. 0 Cold Blast Globe.

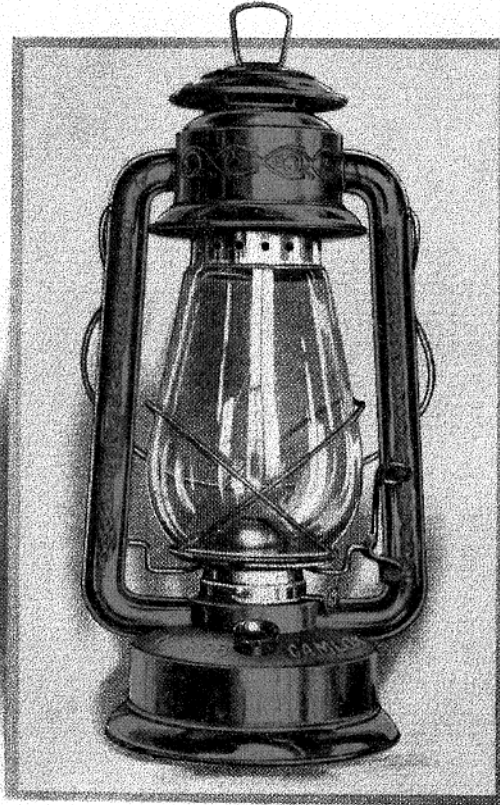
Figure 240—No. 2 Camlox Cold Blast \$40.80 Per Dozen *10-50 doz*

Packed in 1/2 dozen cases. Average weight with case, 25 lbs.
 Packed in 1 dozen cases. Average weight with case, 46 lbs.



No. 2 Camlox Cold Blast

IN RED AND GREEN ENAMEL; NEW PATENT INSIDE LIFT—STANDARD SIZE



SAME as our No. 2 Camlox Cold Blast, but finished in red and green enamel. Attractive in appearance. Will tend to put new life into your lantern line when properly displayed, and enthruse more than ordinary interest at first sight.

CONSTRUCTION

Finished in red and green enamel. Bottoms are concave and double seamed to fount. 10 C. P. light.

A Camlox Cold Blast will hold its brilliant light-giving power against the severest wind tests.

Can be filled, lighted, regulated and extinguished without removing the globe.

Oil fount drawn in one piece and retinned. Two piece stamped tubes. Factory tested.

Height of lantern, 15 inches. Capacity of oil fount when filled sufficient to last 35 hours.

Fitted with No. 2 Cold Blast Burner, one inch Wick and No. 0 Cold Blast Globe.

Figure 240E —No. 2 Camlox Cold Blast, Enameled \$14.30 Per Dozen

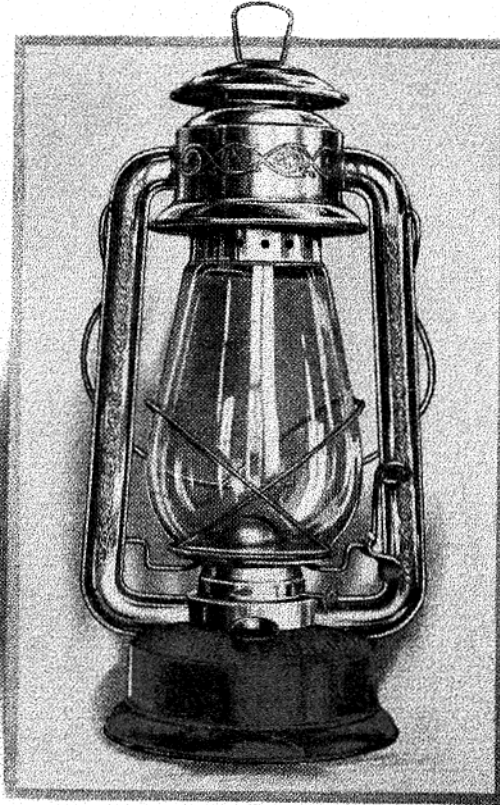
Packed 1/2 dozen in a case, three red and three green. Average weight with case, 25 lbs.

10⁵ 624
25⁴ 20 1/2



No. 2 Camlox Cold Blast

WITH COPPER FOUNT AND NEW PATENT INSIDE LIFT—STANDARD SIZE



ANOTHER most important member of the Camlox line. Made either in plain tin or in red and green enamel, with copper fount instead of tin. Extensively used in mines or in generally damp or wet places. Copper never rusts and lasts a long time. Style same as No. 2 Cold Blast.

CONSTRUCTION

This lantern is finished in plain tin or red and green enamel, but all with copper founts. 10 C. P. light.

Bottoms are concave and double seamed to fount, assuring rigidity for long service. Factory tested.

Can be filled, lighted, regulated and extinguished without removing the globe.

Gives an immensely powerful, brilliant light under all conditions, and is absolutely windproof.

Height of lantern, 15 inches. Capacity of oil fount when filled sufficient to last 35 hours.

Fitted with No. 2 Cold Blast Burner, one inch Wick and No. 0 Cold Blast Globe.

Figure 241—No. 2 Camlox Cold Blast, with Copper Fount

241E—No. 2 Camlox Cold Blast, in Red and Green Enamel, with Copper Fount

\$44.45 Per Dozen
14.65 " "

Packed in $\frac{1}{2}$ dozen cases. Average weight with case, 25 $\frac{1}{2}$ lbs.

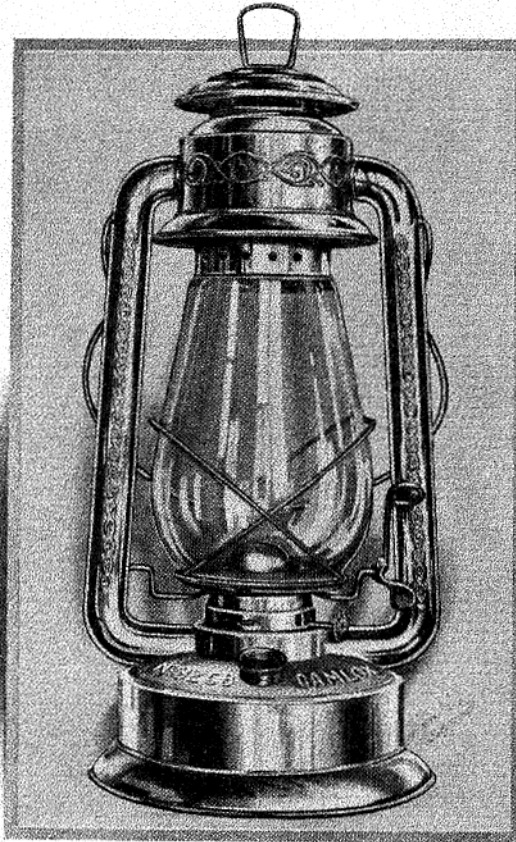
241E—Packed three red and three green in a case.



No. 32 Camlox Cold Blast

EXTRA LARGE FOUNT AND NEW PATENT INSIDE LIFT

No. 32
Burns
Forty-
Eight
Hours



No. 32
Has
Extra
Large
Oil
Fount

FORTY-EIGHT HOURS OIL CAPACITY—HAS NO EQUAL

FORTY-EIGHT hours of continuous, brilliant light is the capacity of this exceptionally serviceable lantern. Contains every good feature of our Camlox models, and will more than do its duty under every requirement. Is strongly built and of elegant finish. Thoroughly tested at factory.

CONSTRUCTION

Can be filled, lighted, regulated and extinguished without removing the globe. 10 C. P. light.

IXAA quality of tin used. Oil fount drawn in one piece and retinned. Two piece stamped tubes.

Bottoms are concave and double seamed to fount, assuring thorough rigidity for long service.

The Camlox Cold Blast will hold its brilliant light-giving power against the severest winds.

Height of lantern, 15 $\frac{1}{4}$ inches. Capacity of oil fount when filled sufficient to last 48 hours.

Fitted with No. 2 Cold Blast Burner, one inch wick and No. 0 Cold Blast Globe.

Figure 242—No. 32 Camlox Cold Blast, Large Fount . . . \$12.30 Per Dozen 12⁰⁰ doz

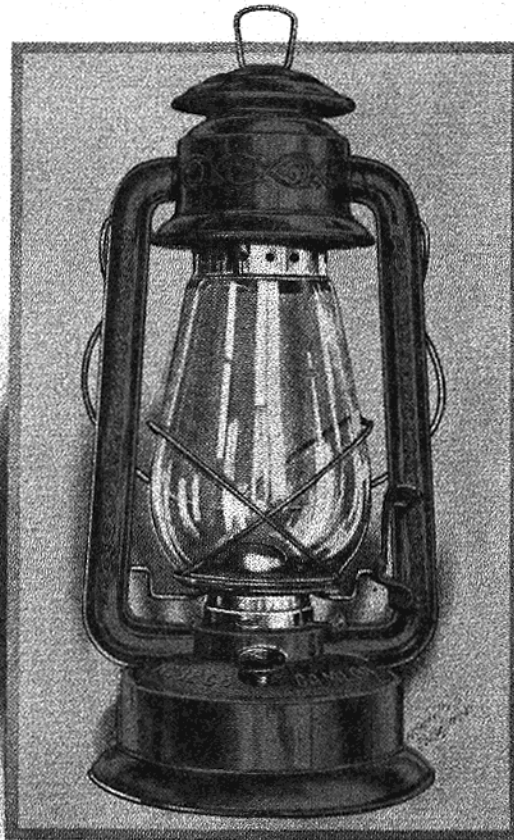
Packed $\frac{1}{2}$ dozen in a case. Average weight with case, 27 lbs.



No. 32 Camlox Cold Blast

EXTRA LARGE FOUNT, GREEN AND RED ENAMEL, NEW PATENT INSIDE LIFT

No. 32
Burns
Forty-
Eight
Hours



No. 32
Has
Extra
Large
Oil
Fount

FORTY-EIGHT HOURS OIL CAPACITY—HAS NO EQUAL

WE can only repeat here what we have already said on opposite page—this style of Camlox being exactly the same in make. The difference in finish—green and red enamel—being intended to meet certain demands, and to create additional zest and “go.” No display complete without it.

CONSTRUCTION

Extra large fount. Bottoms concave and double seamed to fount. 10 C. P. light. Factory tested.

Made in green and red enamel. Oil fount drawn in one piece and retinned. Two piece stamped tubes.

Can be filled, lighted, regulated and extinguished without removing globe.

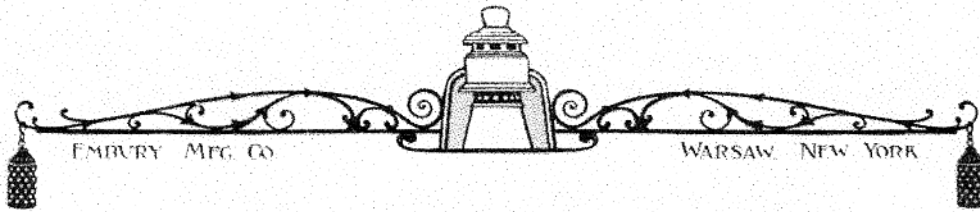
Gives a surprisingly powerful, brilliant light under every condition, and is absolutely windproof.

Height of lantern, 15¼ inches. Capacity of oil fount when filled sufficient to last 48 hours.

Fitted with No. 2 Cold Blast Burner, one inch Wick and No. 0 Cold Blast Globe.

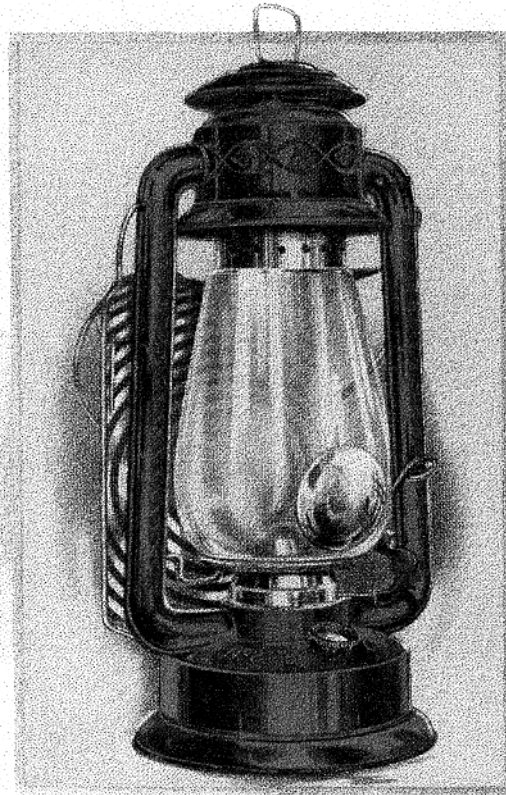
Figure 242E—No. 32 Camlox Cold Blast, Enameled, Large Fount . . . \$43.00 Per Dozen

Packed ½ dozen in a case, three green and three red. Average weight with case, 27 lbs.



No. 2 Camlox Cold Blast Dash

FINISHED IN RED OR BLUE ENAMEL—STANDARD SIZE



DASH lamps of many brands are to be had, but in the Camlox Dash you obtain only the best points practical experience has taught—plus “Embury Quality.” Of great light-giving power and strong construction. Corrugated silver-bright reflector and powerful bull’s eye in globe. In red or blue enamel.

CONSTRUCTION

Made in red or blue enamel or plain tin. Bottoms are concave and double seamed to fount.

The Camlox Cold Blast Dash will hold its brilliant light-giving power in any kind of gale.

Can be filled, lighted and extinguished without removing the globe. Plain globe if desired.

Oil fount drawn in one piece and retinned. Two piece stamped tubes. 10 C. P. light.

Height of lantern, 15 inches. Capacity of oil fount when filled sufficient to last 35 hours.

Factory tested. Fitted with No. 2 Cold Blast Burner, one inch Wick and No. 0 Cold Blast Globe.

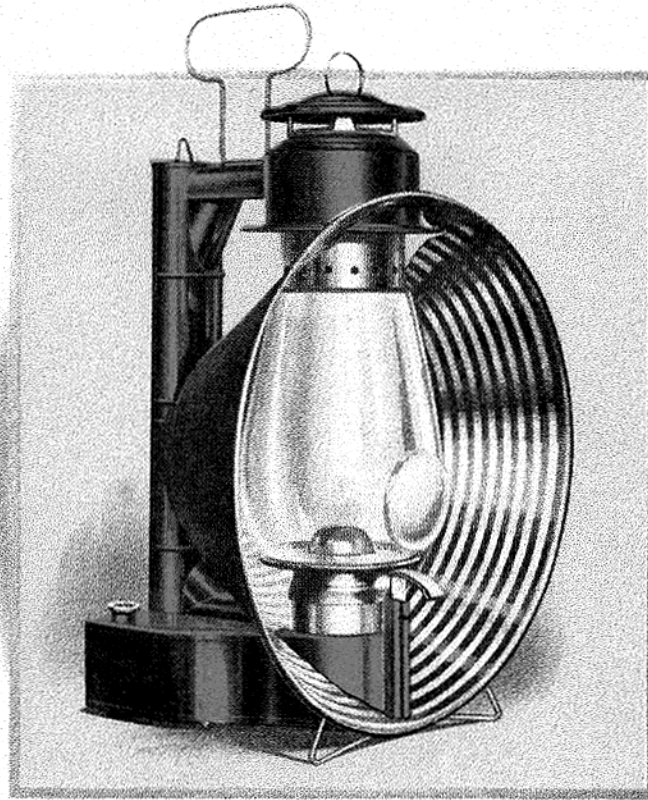
Figure 243—No. 2 Camlox Cold Blast Dash, Plain Tin, Plain Globe	\$14.35 Per Dozen
“ 244—No. 2 Camlox Cold Blast Dash, Plain Tin, B. E. Globe	14.85 “ “
“ 245—No. 2 Camlox Cold Blast Dash, Enameled, Plain Globe	14.85 “ “
“ 246—No. 2 Camlox Cold Blast Dash, Enameled, B. E. Globe	15.40 “ “

Packed $\frac{1}{2}$ dozen in a case. Average weight with case, 33 lbs.



No. 200 Cold Blast Search Light

FINISHED IN RED ENAMEL—STANDARD SIZE



A SEARCH light not only in name but in performance. We take special pride in its wonderful light-giving power and the steady burning qualities possessed. Constructed along plain simple lines, avoiding unnecessary ornamentation. All exposed edges wired. Strong and serviceable.

CONSTRUCTION

Finished in red enamel. Has extra large oil capacity.

Furnished with bull's eye or plain globe. Can be lighted and extinguished without removing globe.

Produces a most powerful, brilliant light under every condition, and is positively windproof.

Heavy corrugated reflector, with extra strong wired edge. Best quality of tin used.

Made on the cold blast principle. Every lamp tested. Height of lantern, 14 $\frac{3}{4}$ inches.

Reflector 11 $\frac{3}{4}$ inches in diameter. No. 2 Cold Blast Burner, 1 inch Wick, No. 0 Cold Blast Globe.

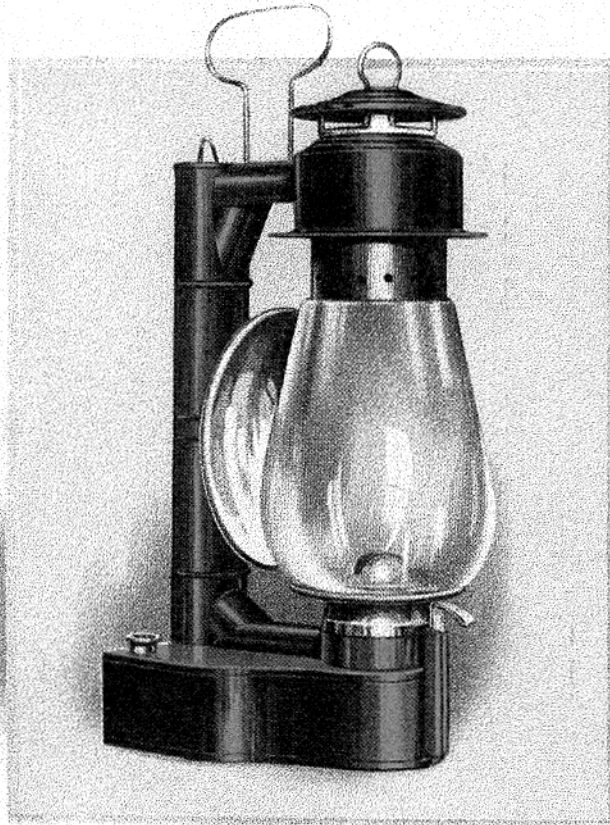
Figure 247—No. 200 Cold Blast Search Light, Enameled, Plain Globe	\$28.20 Per Dozen	27
" 248—No. 200 Cold Blast Search Light, Enameled, B. E. Globe	28.70 " "	38

Packed $\frac{1}{4}$ dozen in a case. Average weight with case, 20 lbs.



No. 120 Cold Blast Reflector Lamp

FINISHED IN RED ENAMEL—STANDARD SIZE



REFLECTOR Lamps are particularly adapted for use in shops, warehouses, barns and like places. Where an extra strong light is required this style of lamp is of especial use. Has silvered glass reflector. Requires very little care. Its beauty lies in its simplicity. But few jointed parts; hence long service.

CONSTRUCTION

Made on the cold blast principle. A tubular lamp of best quality tin. Absolutely windproof.

Throws a powerful, brilliant, reflected light, and every lamp tested before leaving factory.

Can be filled, lighted, regulated and extinguished without removing the globe.

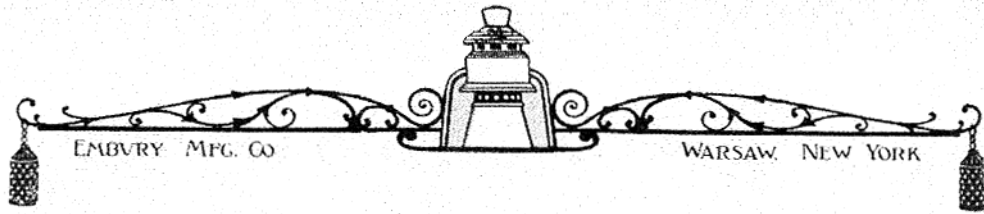
Finished in red enamel or plain tin. Oil font of extra large capacity.

Has five inch silvered glass reflector. Height, 14 $\frac{3}{4}$ inches.

Fitted with No. 2 Cold Blast Burner, one inch Wick and No. 0 Cold Blast Globe.

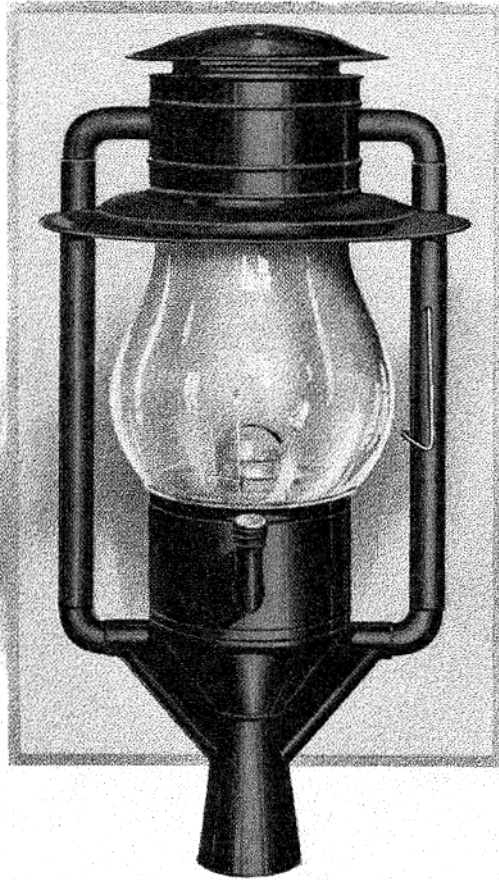
Figure 249—No. 120 Cold Blast Reflector, Plain Tin \$23.60 Per Dozen
 " 250—No. 120 Cold Blast Reflector, Enameled 24.60 "

Packed $\frac{1}{2}$ dozen in a case. Average weight with case, 30 lbs.



No. 93 Tubular Globe Street Lamp

FINISHED IN GREEN ENAMEL—STANDARD SIZE



OUR Tubular Globe Street Lamp is veritably a pillar of light, and absolutely windproof. Our perfected time regulator in itself should place this particular lamp wherever a light of this nature is desired. Exceptionally well built. Finished in green enamel only.

CONSTRUCTION

Has time regulator. Can be regulated to burn a certain number of hours. Windproof in any gale.

Made of heavy tin on the cold blast principle. Passes thorough test before leaving factory.

Fount is removable, and a most convenient lamp to handle and keep clean.

Never fails to give satisfaction. Finished in green enamel. Is absolutely windproof.

Can be filled, lighted, regulated and extinguished without removing the globe.

Height, 26 inches. Fitted with No. 3 Burner, 1½ inch Wick and No. 9 Globe.

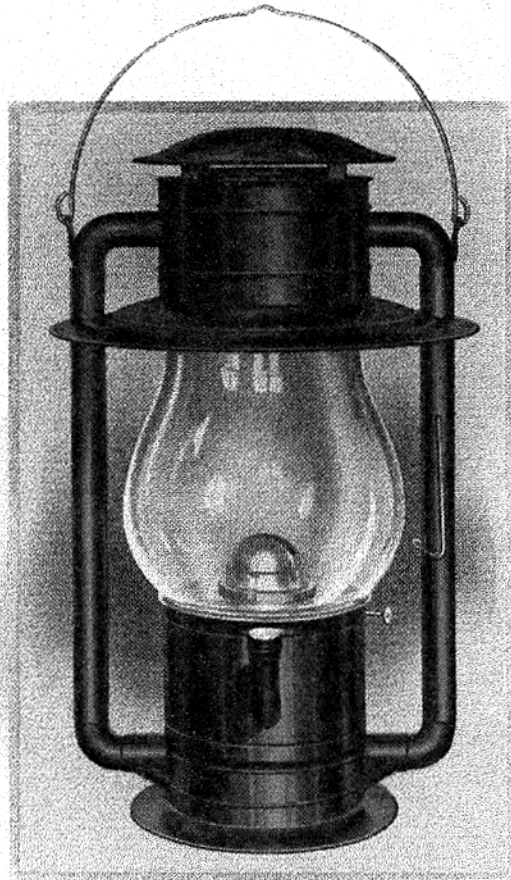
Figure 251—No. 93 Tubular Globe Street Lamp \$5.10 Each

Packed in cases of 1 each. Average weight with case, 20 lbs.



No. 93 Tubular Globe Hanging Lamp

FINISHED IN GREEN ENAMEL—STANDARD SIZE



FOR general out of door purposes. Built on practically the same lines as our Tubular Street Lamp. Presents a neat appearance and possesses illuminating powers attained by no other. Most carefully built; is rigid and firm. Compact, yet carrying an individuality all its own.

CONSTRUCTION

Time regulator attachment. Can be regulated to burn at will a certain number of hours.

Made of heavy tin on the cold blast principle. Thoroughly tested before leaving factory.

Fount is removable, and a most convenient lamp to take care of and keep clean.

Guaranteed to give satisfaction. Finished in green enamel only. Absolutely windproof.

Can be filled, lighted and regulated without removing the globe.

Height, 21 inches. Fitted with No. 3 Burner, one one-half inch Wick and No. 9 Globe.

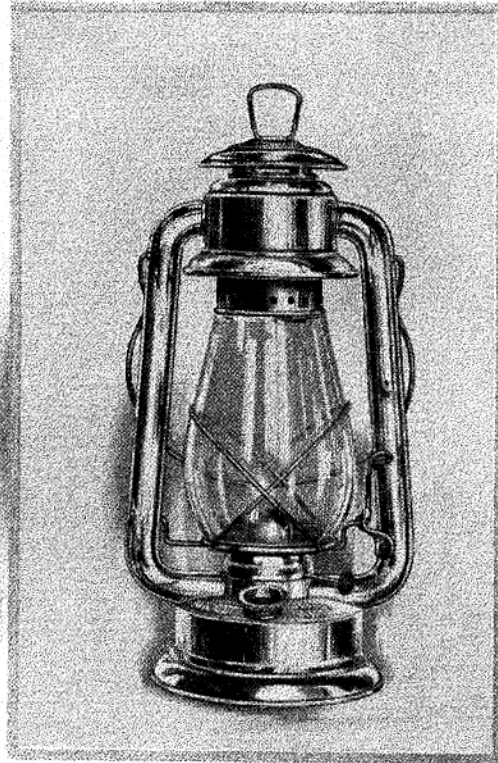
Figure 252—No. 93 Tubular Globe Hanging Lamp \$5.40 Each

Packed in cases of 1 each. Average weight with case, 20 lbs.



“Midget” Cold Blast

HEIGHT TWELVE AND A HALF INCHES



ONE of our latest productions. A perfect cold blast lantern of small size. Has our new patent inside lift and equal in all respects to its larger companions. Past sales have more than proved its utility. It is highly appreciated as a ladies' lantern. Twenty-four hours oil capacity—has no equal.

CONSTRUCTION

Perfect wind resistance under every test, with bright, steady light at all times.

Has heavy concave bottom seamed to fount, with fount drawn in one piece and refitted.

Two piece stamped tubes; made of IXAA quality of tin. Of high grade construction throughout.

Can be filled, lighted and extinguished without removing globe. Height of lantern, 12½ inches.

Every lamp tested before leaving factory. Will burn steadily 24 hours when filled.

Supplied with No. 1 Burner, five-eighths inch Wick and No. 0 Midget Globe.

No. 124 Midget Cold Blast, Tin	\$ 9.00 Per Dozen
No. 125 Midget Cold Blast, Brass	15.40 " "
No. 126 Midget Cold Blast, Nickel Plated, Brass	22.50 " "

Packed 1 dozen in a case. Average weight with case, tin, 30 lbs., brass, 32 lbs.



“Midget” Cold Blast Dash

FINISHED IN RED ENAMEL—HEIGHT TWELVE AND A HALF INCHES



MIDGET Dash Lamps possess in every way the same superior qualities contained in others of the same brand. Are just as serviceable throughout, meeting every requirement. Exceptionally compact and self-contained. The Midget Dash could not be made better if we tried.

CONSTRUCTION

Finished in red enamel only. Corrugated silver-bright reflector and powerful bull's eye in globe.

Two piece stamped tubes. Of high grade construction throughout. Height of lantern, 12½ in.

Can be filled, lighted, regulated and extinguished without removing the globe.

Perfect combustion, resulting in most brilliant reflected light against strongest wind tests

Every lamp tested before leaving factory. Will burn steadily when filled 24 hours.

Supplied with No. 1 Burner, five-eighths inch Wick and No. 0 Midget Globe.

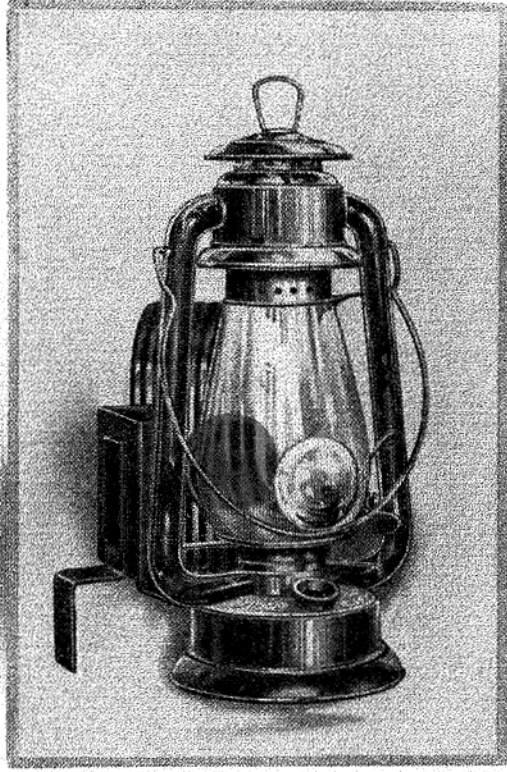
No. 127 Midget Cold Blast Dash, Bull's Eye Globe \$42.50 Per Dozen 13⁰⁰

Packed ½ dozen in a case. Average weight with case, 20 lbs.



"Midget" Cold Blast Vehicle Lamp

IN BLACK ENAMEL WITH RUBY LENS IN REFLECTOR



HEIGHT TWELVE AND A HALF INCHES

RECENTLY enacted vehicle laws are responsible for our Cold Blast "Midget" Vehicle Lamp. Conforms to all requirements of the law. Supplied with bracket for easy and rigid attachment. Throws a brilliant reflected light in front and red signal in rear. A little gem of endurance in all kinds of weather.

CONSTRUCTION

Two piece stamped tubes. Of high grade construction throughout. Burns 24 hours when filled. Can be filled, lighted regulated and extinguished without removing the globe. Factory tested. Perfect wind resistance under every test, with bright, steady light at all times.

Finished in black enamel. Best silver-bright reflector and powerful magnifying bull's-eye. Two and one-half inch Ruby lens in reflector. Heavy bracket, shaped for easy secure attachment. Fitted with No. 1 Burner, five-eighths inch Wick and No. 0 Midget Globe.

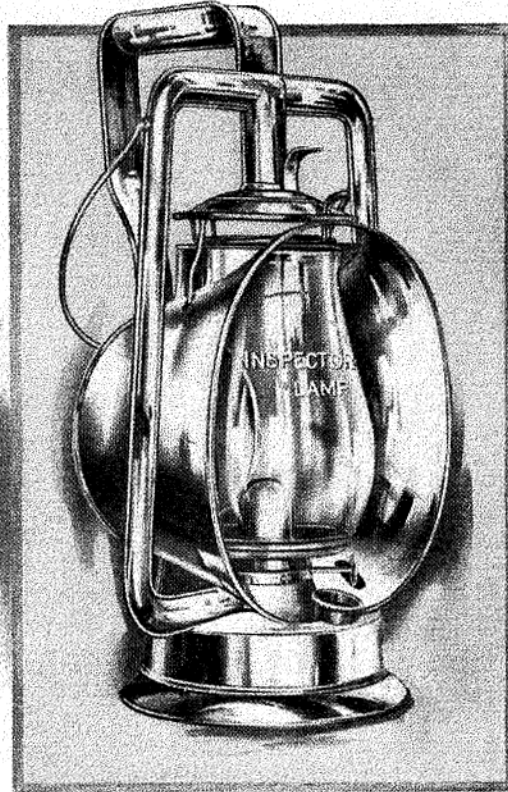
No. 130 Midget Vehicle Lamp, with Bracket ~~\$16.00~~ Per Dozen *15.00 doz*

Packed 1 dozen in a case. Average weight with case, 55 lbs.
Each Lamp packed in a handsome carton.



No. 140 Railway Inspectors' Lamp

STANDARD SIZE



NOTABLE among our complete line of sundry products is the Railway Inspector lamp. Made for every purpose and requirement of railway inspection work and similar callings. Circular hood containing silver-bright reflector with auxiliary hand grip to suit any emergency.

CONSTRUCTION

IXAA quality of tin used. Reflector hood extra strong and heavily wired to resist abuse.

Of tubular construction and easy working parts. Silvered glass reflector in hood securely fastened.

Can be filled, lighted, regulated and extinguished without removing the globe. All lamps tested.

Gives a most powerful reflected light under most adverse conditions. Will burn 30 hours.

Supplied with No. 1 Burner, five-eighths inch Wick and No. 0 Globe.

Heavy handle for easy carrying in addition to usual wire bail.

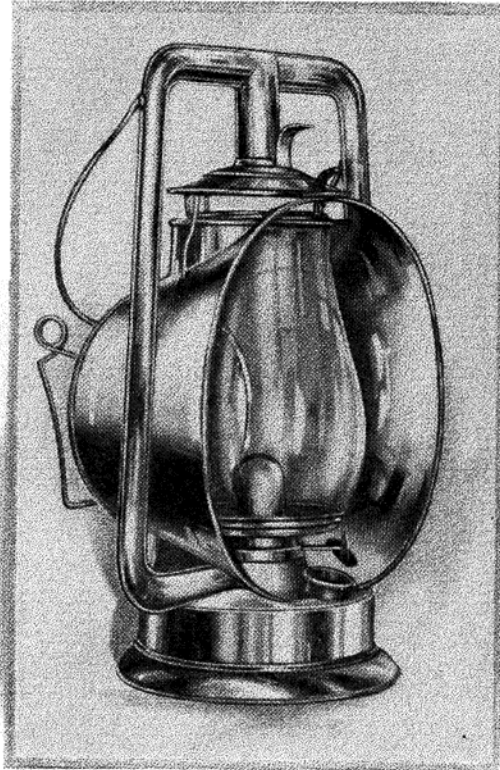
No. 140 Railway Inspectors' Lamp, complete \$23.00 Per Dozen 24⁰⁰

Packed 1/2 in a case. Average weight with case, 33 lbs.



No. 141 Hood Dash Lamp

STANDARD SIZE



ANOTHER style of dash lamp is our No. 141. Similarly constructed and of the same material as our Railway Inspectors pattern—without the auxiliary hand grip. A strong wire spring bracket, securely fastened, holds lamp to dash board. Throws a very penetrating light.

CONSTRUCTION

Of tubular construction and easy working parts throughout. Reflector securely fastened.

EXAA quality of tin used. Reflector hood extra strong and heavily wired to resist abuse.

Can be filled, lighted, regulated and extinguished without removing the globe. All lamps tested.

Finished in red enamel or plain tin. Best silvered-glass reflector in hood, securely fastened.

Throws a strong, powerful reflected light under most adverse conditions. Will burn 30 hours.

Supplied with No. 1 Burner, five eighths inch Wick and No. 0 Globe

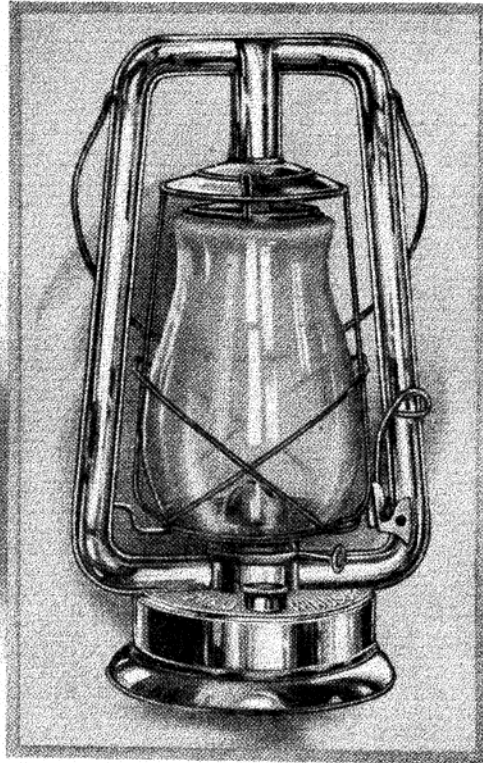
No. 141 Hood Dash Lamp, with Wire Bracket	\$21.50 Per Dozen
No. 142 Hood Dash Lamp, with Wire Bracket, Enameled	22.50 " " "

Packed $\frac{1}{2}$ dozen in a case. Average weight with case, 32 lbs.



No. 0 Windsor

INSIDE LIFT HOT BLAST LANTERN—STANDARD SIZE



WINDSOR Lanterns are well known to the trade and need no introduction. The above is our regular No. 210 style. They can be filled, lighted, regulated and extinguished without removing the globe. Have inside lift, are strong, and present only the best points found in a good lantern.

CONSTRUCTION

Oil fount is drawn in one piece and retinned. Will burn 30 hours when filled.

The bottom is double seamed to the fount, insuring long, hard wear.

A good commercial pattern and standard size. Height of lantern 13 $\frac{1}{4}$ inches.

Two pieced stamped tubes and made of IX quality of tin. Thoroughly tested at factory.

Throws a strong, bright light. Can be lighted and extinguished without removing globe.

Supplied with No. 1 Burner, five-eighths inch Wick and No. 0 Globe.

Figure 210	—No. 0 Windsor, Plain Globe	..	\$5.50	Per Dozen	575
" 210E	—No. 0 Windsor, Enameled, Plain Globe	..	6.00	" "	
" 211	—No. 0 Windsor, Ruby Globe	..	7.20	" "	

Packed 1 dozen in a case. Average weight with case, 36 lbs.

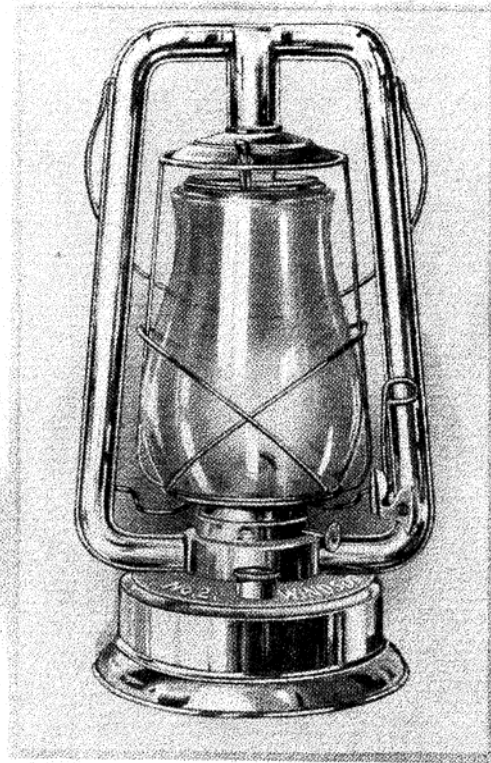
When packed in $\frac{1}{2}$ dozen cases an additional charge of ten cents per dozen, net, is made.

Average weight, $\frac{1}{2}$ dozen in a case, 18 lbs.



No. 2 Windsor

LARGE FOUNT, INSIDE LIFT HOT BLAST LANTERN—STANDARD SIZE



LIKE our No. 0 Windsor on opposite page, excepting that it has a larger oil fount and is fitted with a No. 2 Burner. An acknowledged leader of its class. Has no superior as a light-giver, oil-saver and for ease of handling. A ready seller. Additional oil carrying capacity increases its field of usefulness.

CONSTRUCTION

Bottoms are concave and double seamed to fount, assuring rigidity.

IX quality of tin used. Oil fount drawn in one piece and retinned. Two-piece stamped tubes.

Large fount. Can be filled, lighted, regulated and extinguished without removing the globe.

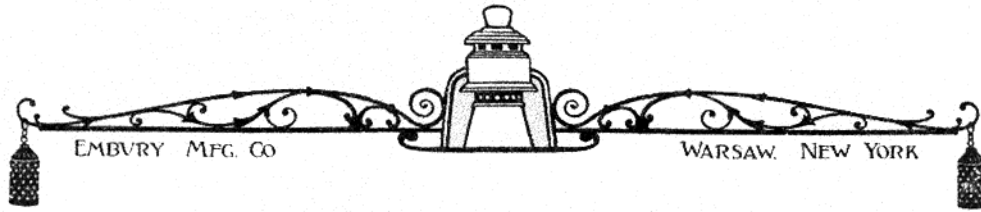
Thoroughly tested at factory. Height of lantern 13 $\frac{3}{4}$ inches.

Capacity of oil fount when filled sufficient to last 35 hours.

Fitted with No. 2 Hot Blast Burner, with one inch Wick and No. 0 Globe.

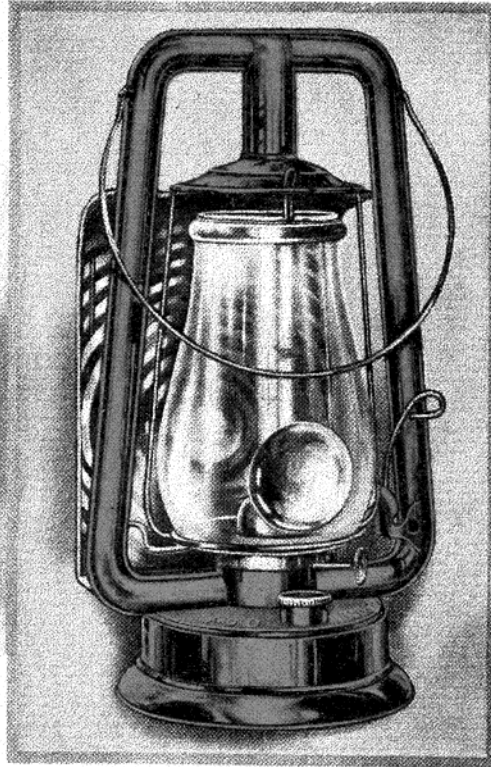
Figure 220—No. 2 Windsor, Plain Globe \$8.25 Per Dozen

Packed 1 dozen in a case. Average weight with case, 38 lbs.



No. 0 Windsor Dash

INSIDE LIFT DASH LAMP—STANDARD SIZE



IN the Windsor Dash are embodied improvements which insure greatest efficiency and service. Of practical, honest construction, made to withstand the constant wear and tear of rough riding vehicles successfully. All edges and trimmings securely wired and finished in a thorough workmanlike manner.

CONSTRUCTION

Of tubular construction and easy working parts throughout. Has inside lift. Height $13\frac{1}{4}$ inches.

Made of IX tin. Reflector extra strong and heavily wired to resist abuse.

Furnished with bull's eye or plain globe; red enamel or plain tin. All lamps thoroughly tested.

Can be filled, lighted, regulated and extinguished without removing the globe.

Gives a most powerful reflected light under most adverse conditions. Will burn 30 hours.

Supplied with No. 1 Burner, five-eighths inch Wick and No. 0 Globe.

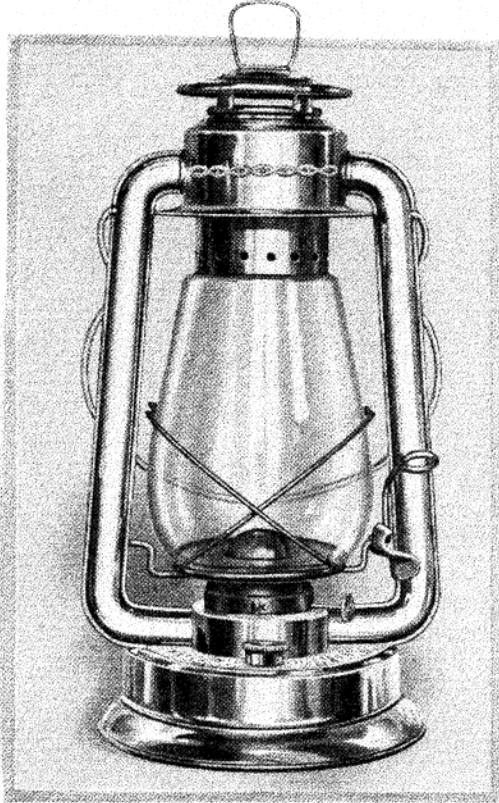
Figure 212—No. 0 Windsor Dash, Plain Tin, Plain Globe	\$8.25 Per Dozen
" 213—No. 0 Windsor Dash, Plain Tin, B. E. Globe	8.80 " "
" 214—No. 0 Windsor Dash, Enameled, Plain Globe	8.80 " "
" 215—No. 0 Windsor Dash, Enameled, B. E. Globe	9.25 " "

Packed $\frac{1}{2}$ dozen in a case. Average weight with case, 25 lbs.



No. 2 Windsor Cold Blast

INSIDE LIFT—COLD BLAST LANTERN—STANDARD SIZE



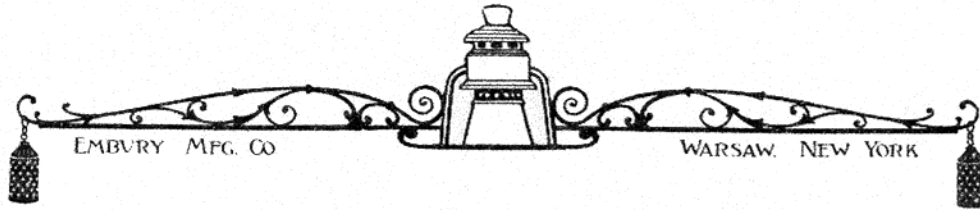
A PRACTICAL Cold Blast Lantern of perfect combustion. Made and tested under most exacting conditions. Has inside lift and other commendable features. Made for hard usage and will fill every demand made upon it. Our Windsor line, quality and style considered, has no superior.

CONSTRUCTION

Can be filled, lighted, regulated or extinguished without removing the globe. 10 C. P. light.	The Windsor Cold Blast will hold its brilliant light-giving power against the severest winds.
Bottoms are concave and double seamed to fount, assuring rigidity. Factory tested.	Height of lantern 15 inches. Capacity of oil fount when filled sufficient to last 35 hours.
IX quality of tin used. Oil fount drawn in one piece and retinned. Two piece stamped tubes.	Fitted with No. 2 Cold Blast Burner, with one inch Wick and No. 0 Cold Blast Globe.

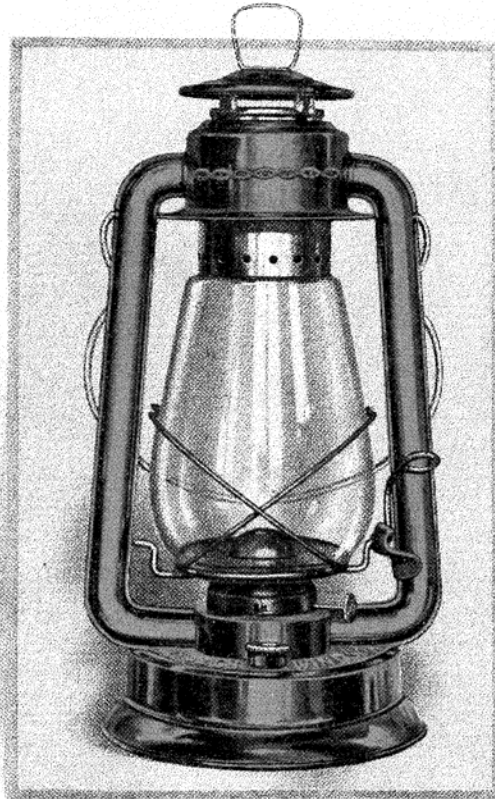
Figure 240—No. 2 Windsor Cold Blast \$9.50 Per Dozen *90.00*

Packed in 1/2 dozen cases. Average weight with case, 25 lbs.
 Packed in 1 dozen cases. Average weight with case, 46 lbs.



No. 2 Windsor Cold Blast

IN RED AND GREEN ENAMEL—STANDARD SIZE



SAME pattern as our No. 2 Windsor Cold Blast. Enamel finish—red and green. A splendid style to help make your line of Lanterns most complete and attractive. Quality A1 and construction of the very best. Enameled lanterns have become very popular in certain markets.

CONSTRUCTION

Windsor Cold Blast holds its brilliant light-giving power against most violent winds. 10 C. P. light.

Finished in red and green enamel. Bottoms are concave and double seamed to fount.

Can be filled, lighted, regulated and extinguished without removing the globe. Factory tested.

Height of lantern, 15 inches. Capacity of oil fount when filled sufficient to last 35 hours.

IX quality of tin used. Oil fount drawn in one piece and retinned. Two-piece stamped tubes.

Fitted with No. 2 Cold Blast Burner, with one inch Wick and No. 0 Cold Blast Globe.

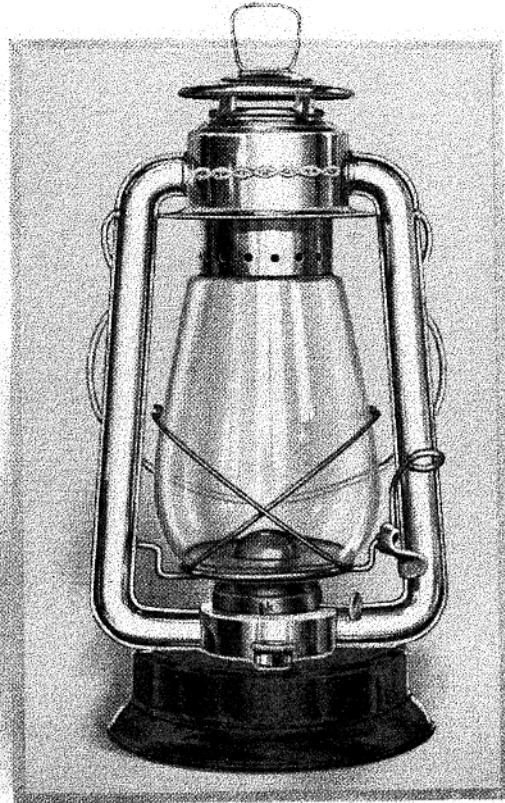
Figure 240E—No. 2 Windsor Cold Blast, Enameled \$10.00 Per Dozen

Packed $\frac{1}{2}$ dozen in a case, three red and three green. Average weight with case, 25 lbs.



No. 2 Windsor Cold Blast

WITH COPPER FOUNT, INSIDE LIFT—STANDARD SIZE



A COPPER fount lantern in either plain tin, or in red and green enamel. Practical for use in mines and other damp places. As copper will not rust, the life of the lantern is materially lengthened. General style practically the same as our regular No. 2 Windsor Cold Blast model.

CONSTRUCTION

Bottoms are concave and double seamed to fount, assuring rigidity for long service. 10 C. P. light.

This lantern is finished in plain tin or red and green enamel, but all with copper founts.

Gives a powerful, brilliant light under all conditions, and is perfectly windproof.

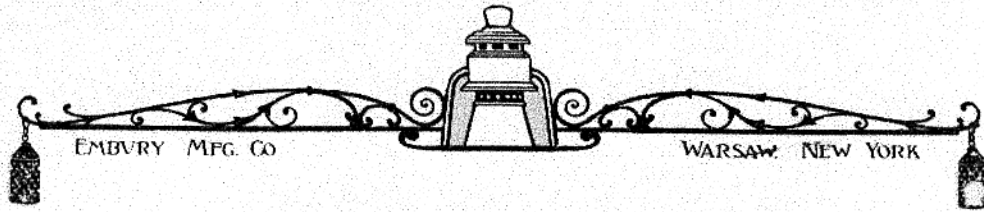
Can be filled, lighted, regulated and extinguished without removing the globe. Factory tested.

Height of lantern 15 inches. Capacity of oil fount when filled sufficient to last 35 hours.

Fitted with No. 2 Cold Blast Burner, with one inch Wick and No. 0 Cold Blast Globe.

Figure 241—No. 2 Windsor Cold Blast, with Copper Fount \$13.45 Per Dozen
 " 241E—No. 2 Windsor Cold Blast, in Red and Green Enamel with Copper Fount 13.95 " "

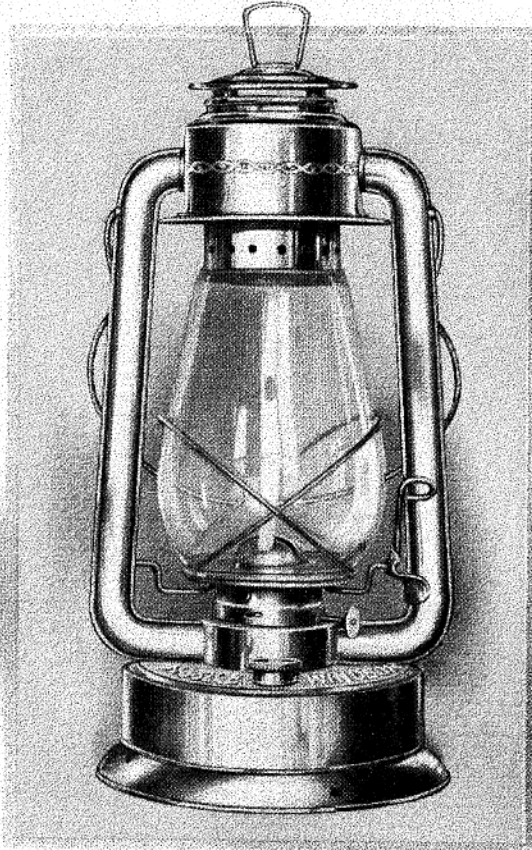
Packed 1/2 dozen in a case. Average weight with case, 25 1/2 lbs.
 241E—Packed three red and three green in a case.



No. 32 Windsor Cold Blast

EXTRA LARGE FOUNT—INSIDE LIFT

**No. 32
Burns
Forty-
Eight
Hours**



**No. 32
Has
Extra
Large
Oil
Fount**

FORTY-EIGHT HOURS OIL CAPACITY—HAS NO EQUAL

A GENERAL favorite owing to ease of handling and capacity of oil fount. Quite as serviceable as our No. 32 Cold Blast Camlox, but far in advance of any other. Gives an exceedingly powerful light, and can be relied upon under all conditions. A strong pattern to show, where others fail to interest your customer.

CONSTRUCTION

Easily filled, lighted, regulated and extinguished without removing the globe. 10 C. P. light.

IX quality of tin used. Oil fount drawn in one piece and retinned. Two piece stamped tubes.

Bottoms are concave, double seamed to fount, assuring thorough rigidity for long service.

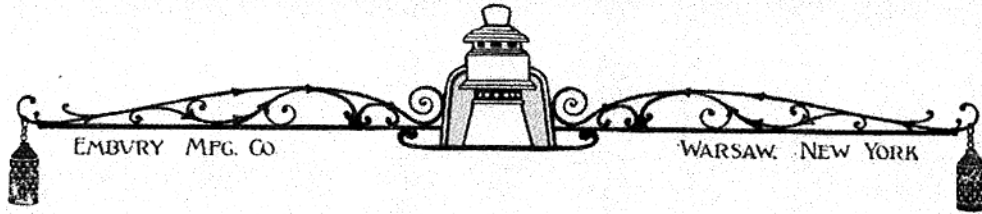
The Windsor Cold Blast will hold its splendid light-giving power against the severest winds.

Height of lantern, 15¼ inches. Capacity when filled sufficient to last 48 hours. Factory tested.

Fitted with No. 2 Cold Blast Burner, with one inch Wick and No. 0 Cold Blast Globe.

Figure 242—No. 32 Windsor Cold Blast, Large Fount \$11.70 Per Dozen

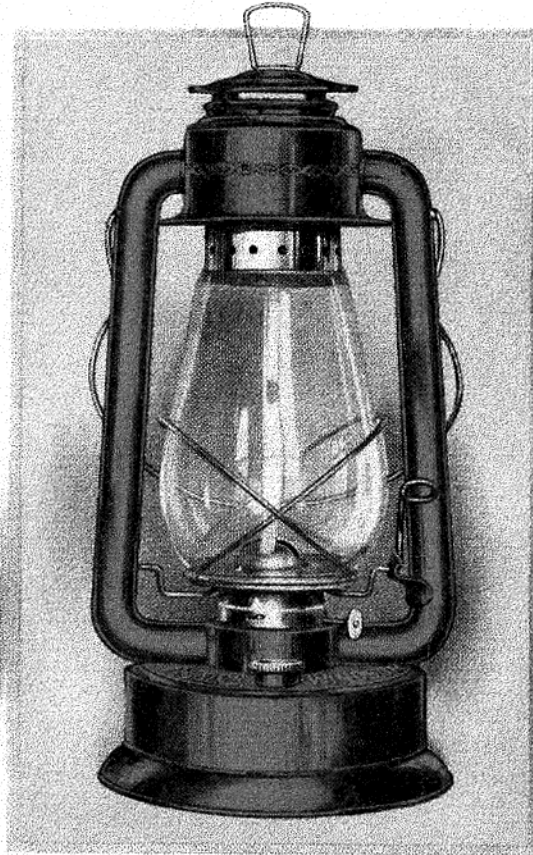
Packed ½ dozen in a case. Average weight with case, 27 lbs.



No. 32 Windsor Cold Blast

EXTRA LARGE FOUNT GREEN AND RED ENAMEL

No. 32
Burns
Forty-
Eight
Hours



No. 32
Has
Extra
Large
Oil
Fount

FORTY-EIGHT HOURS OIL CAPACITY—HAS NO EQUAL

BEST proposition for attracting attention and inducing sales. Our Windsor Cold Blast, enameled in green and red, is an all 'round high grade lantern. Identical in construction with our plain tin finish on opposite page. Also extra large fount. No assortment complete without them.

CONSTRUCTION

Bottoms concave and double seamed to fount. Built for long service. 10 C. P. light.

In green or red enamel. Oil fount drawn in one piece and re-tinned. Two-piece stamped tubes.

Filling, lighting, regulating and extinguishing can be done without removing globe.

Gives a powerful, brilliant light under every condition, and positively windproof. Factory tested.

Height of lantern, 15 $\frac{1}{4}$ inches. Capacity of oil fount when filled sufficient to last 48 hours.

Fitted with No. 2 Cold Blast Burner, with one inch Wick and No. 0 Cold Blast Globe.

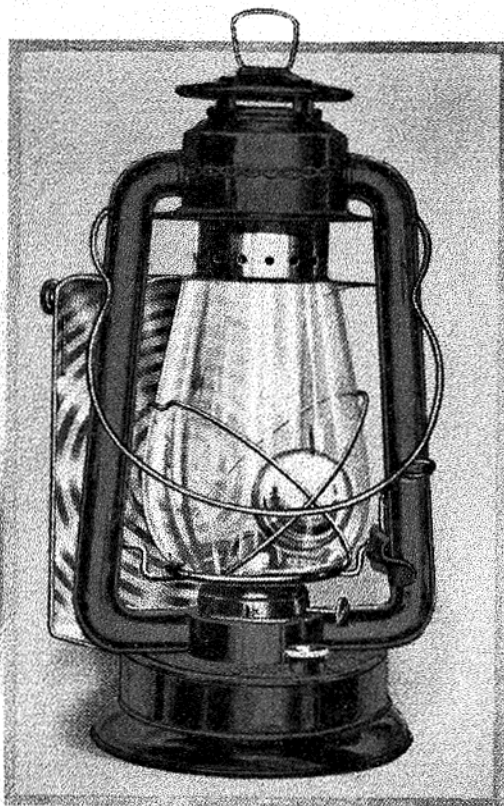
Figure 242E—No. 32 Windsor Cold Blast, Enameled, Large Fount . . . \$12.40 Per Dozen

Packed $\frac{1}{2}$ dozen in a case, three green and three red. Average weight with case, 27 lbs.



No. 2 Windsor Cold Blast Dash

IN RED OR BLUE ENAMEL—STANDARD SIZE



FINALLY on this the last page of our catalog, we show a No. 2 Windsor Cold Blast Dash. We lay stress on the utility and special uses for which this lamp is made. Enameled in red or blue, as ordered. Has strong spring for attaching to dash. Throws brightest light and meets every requirement.

CONSTRUCTION

Made in red or blue enamel or plain tin. Bottoms are concave and double seamed to fount.

Furnished with bull's eye or plain globe. Lighted and extinguished without removing globe.

A Windsor Cold Blast Dash will hold its exceptional light-giving power in any headwind.

IX quality of tin used. Oil fount drawn in one piece and retinned. Two-piece stamped tubes.

10 C. P. light. Height 15 inches. Capacity of oil fount when filled sufficient to last 35 hours.

Factory tested. Fitted with No. 2 Cold Blast Burner, one inch Wick and No. 0 Cold Blast Globe.

Figure 243—No. 2 Windsor Cold Blast Dash, Plain Tin, Plain Globe . . .	\$13.65	Per Dozen
" 244—No. 2 Windsor Cold Blast Dash, Plain Tin, B. E. Globe . . .	14.15	" "
" 245—No. 2 Windsor Cold Blast Dash, Enameled, Plain Globe . . .	14.15	" "
" 246—No. 2 Windsor Cold Blast Dash, Enameled, B. E. Globe . . .	14.60	" "

Packed $\frac{1}{2}$ dozen in a case. Average weight with case, 33 lbs.