

NEW YORK

1840

"DIETZ"

1894

CHICAGO

396059

THE LIBRARIES
COLUMBIA UNIVERSITY

ANY,

R

AVERY LIBRARY

*Classics
AT
4100
R1
1894*

toves,

Commercial, Railroad and other Lanterns.

MAIN OFFICE AND FACTORY,

BRANCH,

NEW YORK,

CHICAGO,

U. S. A.

INCORPORATED 1887.

ESTABLISHED 1840.

R. E. DIETZ COMPANY,

MANUFACTURERS OF THE WELL-KNOWN

“DIETZ” TUBULAR

Lanterns,

Street Lamps,

Driving Lamps,

Oil and Gas Stoves,

Commercial, Railroad and other Lanterns.

MAIN OFFICE AND FACTORY,

NEW YORK,

U. S. A.

BRANCH,

CHICAGO,

INCORPORATED 1887.

WE CALL BUYERS' ATTENTION TO

A FEW FACTS

OUR goods are known wherever your salesmen travel. They require less talk to sell than makes not so well known, as the Trade generally acknowledge them to have no superior.

Our line is more complete than ever, and our prices will suit all.

Our Lanterns have been imitated, but never equaled.

In selecting a Lantern you should aim to secure the safest and best.

Remember there are some makes of cheap Lanterns that cause much annoyance as well as damage.

R. E. BIETZ COMPANY.

60 LAIGHT STREET,
NEW YORK CITY,
U. S. A.

R. E. DIETZ COMPANY.

"DIETZ"

No. 0 Regular Tubular Lantern.

WITH RUBY GLOBE



No. 1 Burner.

$\frac{1}{8}$ -inch Wick.

No. 0 Globe.

STANDARD SIZE FOR KEROSENE

Covered by Eight U. S. Letters Patents.

We make twelve styles of above size, all taking same size Globe and Burner.

All our Tubular Lanterns are of uniform quality, being made from the best material. The Oil Pots are drawn in one piece, and are made from I X Tin. The Burners are extra heavy and the Globes are carefully selected. The above is our cheapest style.

COLORED GLOBES.

We carry a stock of No. 0 Tubular Globes—Ruby, Blue or Green.

We pack these Lanterns in cases of one dozen each, measuring $3\frac{1}{2}$ cubic feet. Average weight with case, 35 lbs. to the dozen; net, 20 lbs.

Price, 45 cents each.

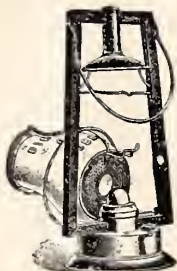
R. E. DIETZ COMPANY.

"DIETZ"

O. K. Tubular Lantern.



No. 1 Burner.



$\frac{1}{2}$ -inch Wick.

No. 0 Globe.

STANDARD SIZE.

KEROSENE

Covered by Nine U.S. Letters Patents.

One illustration shows the Lantern with the Globe tilted for lighting, the other shows the Globe in place and the Lantern ready for use.

We consider this the best low-priced Lantern on the market, and advise those in want of a cheap, reliable Lantern to give it a trial

We have Ruby, Blue and Green Globes for this Lantern

Packed in cases of one dozen each, measuring $3\frac{1}{2}$ cubic feet.
Average weight, 35 lbs. to the dozen; net, 22 lbs.

Price, 50 cents each.

R. E. DIETZ COMPANY.

"DIETZ"

Side Lift Tubular Lantern.



No. 1 Burner.



$\frac{1}{4}$ -inch Wick.

No. 0 Globe.

STANDARD SIZE. FOR KEROSENE.

Covered by Eleven U. S. Letters Patents.

One illustration shows the Lantern with the Globe raised for lighting, the other shows the Globe in place and the Lantern ready for use.

The Crank at the side raises and lowers the Globe and securely locks the Burner in place when down.

We anticipate a large sale for this Lantern.

We have Ruby, Blue and Green Globes for this Lantern.

Packed in cases of one dozen each, measuring $3\frac{1}{3}$ cubic feet. Average weight with case, 36 lbs. to the dozen; net, 22 lbs.

Price, 55 cents each.

R. E. DIETZ COMPANY,

"DIETZ"

Square Lift Tubular Lantern.



No. 1 Burner.



No. 0 Globe

$\frac{1}{2}$ inch Wick

STANDARD SIZE. FOR KEROSENE.

Covered by Thirteen U. S. Letters Patents

One illustration shows the Lantern with the Globe raised for lighting, the other shows the Globe in place and the Lantern ready for use. The Globe is raised by the thumb piece on top.

This is one of our most popular Lanterns; it gives universal satisfaction and has a large sale.

We have Ruby, Blue and Green Globes for this Lantern.

Packed in cases of one dozen each, measuring $3\frac{1}{2}$ cubic feet. Average weight with case, 37 lbs. to the dozen; net, 22 lbs.

Price, 60 cents each.

R. E. DIETZ COMPANY.

"DIETZ"

Anti-Friction Tubular Lantern.



No. 1 Burner.

$\frac{1}{4}$ -inch Wick.



No. 0 Globe.

STANDARD SIZE. FOR KEROSENE.

Covered by Thirteen U. S. Letters Patents.

One illustration shows the Lantern with the Globe raised for lighting, the other shows the Globe in place and the Lantern ready for use.

The device for lowering and raising the Globe is entirely new; it does away with all friction on the side wires, you turn the Crank or Handle at the top to the right and it raises the Globe, you reverse the movement, the Globe is lowered and the Burner is securely locked in place.

We have Ruby, Blue and Green Globes for this Lantern.

Packed in cases of one dozen each, measuring $3\frac{1}{2}$ cubic feet. Average weight with case, 37 lbs. to the dozen; net, 22 lbs.

Price, 70 cents each.

R. E. DIETZ COMPANY.

"DIETZ"

Best Square Lift Tubular Lantern.



No. 1 Burner.



3/4-inch Wick.

No. 0 Globe.

STANDARD SIZE. FOR KEROSENE

Covered by Fifteen U. S. Letters Patents.

One illustration shows the Lantern with the Globe raised for lighting, the other shows the Globe in place and the Lantern ready for use. The Globe and Burner are securely locked against displacement by accident. Our Patent Braces on the bottom of this Lantern give it much additional strength. It will outlast any ordinary Lantern.

We have Ruby, Blue and Green Globes for this Lantern.

Packed in cases of one dozen each, measuring $3\frac{1}{2}$ cubic feet., Average weight with case, 38 lbs. to the dozen; net, 23 lbs.

Price, 75 cents each.

R. E. DIETZ COMPANY.

"DIETZ"

Best Round Lift Tubular Lantern.



No. 1 Burner

$\frac{3}{4}$ -inch Wick.



No. 0 Globe

STANDARD SIZE FOR KEROSENE.

Covered by Twelve U. S. Letters Patents.

One illustration shows the Lantern with the Globe raised for lighting, the other shows the Globe in place and the Lantern ready for use. The Globe and Burner are securely locked against displacement by accident. Our Patent Braces on the bottom of this Lantern give it much additional strength where needed.

We have Ruby, Blue and Green Globes for this Lantern.

Packed in cases of one dozen each, measuring $3\frac{1}{2}$ cubic feet. Average weight with case, 38 lbs. to the dozen; net, 23 lbs.

Price, 80 cents each.

R. E. DIETZ COMPANY.

"DIETZ"

Iron Clad. Tubular Lantern.



No. 1 Burner.



$\frac{1}{2}$ -inch Wick.

No. 0 Globe.

STANDARD SIZE. FOR KEROSENE.

Covered by Eighteen U. S. Letters Patents

One illustration shows the Lantern with the Globe raised for lighting, the other shows the Globe in place and the Lantern ready for use

This is the strongest Tubular Lantern ever made. In addition to having our patent braces, it has an iron bottom, making it almost indestructible; it is largely used by contractors.

We have Ruby, Blue and Green Globes for this Lantern.

Packed in cases of one dozen each, measuring $3\frac{1}{4}$ cubic feet, Average weight with case, 48 lbs. to the dozen; net, 28 lbs.

Price, 90 cents each,

R. E. DIETZ COMPANY.

"DIETZ"

No. 1 B Side Lift Tubular Lantern.



No. 2 Burner.

1-inch Wick.



No. 0 Globe.

FOR KEROSENE.

Covered by Eleven U. S. Letters Patents.

One illustration shows the Lantern with the Globe raised for lighting, the other shows the Globe in place and the Lantern ready for use.

The ordinary No. 0 Tubular Lantern has a $\frac{5}{8}$ -inch Burner.

This Lantern has the No. 2 Burner, 1-inch Wick, and should fill a waht where a large amount of light is needed in a Hand Lantern.

The Oil Pot holds $1\frac{1}{4}$ pints of oil, and the Lantern will burn 19 hours without refilling.

We have Ruby, Blue and Green Globes for this Lantern.

Packed in cases of one dozen each, measuring $3\frac{1}{2}$ cubic feet. Average weight with case, 46 lbs. to the dozen; net, 23 lbs.

Price, 80 cents each.

R. E. DIETZ COMPANY.

"DIETZ"

Tubular Mill Lantern.



No. 2 Burner.

1-inch Wick.

No. O Globe.

FOR KEROSENE.

Globe and burner lock automatically.

The Oil Pot holds $1\frac{1}{4}$ pints of oil, and the lantern will burn 19 hours with one filling.

This lantern is fitted with our patent Wind Break Guard. The guard and globe can be locked down with a padlock, preventing access to the flame.

The best lantern in the world for use in mills, shops and factories
Packed in half dozen cases; net, 17 lbs.; gross, 32 lbs.; measuring
3⁴ cubic feet.

Send for special circular about it.

PRICE..... \$1.50 Each.

R. E. DIETZ COMPANY

"DIETZ"

No. 2 Tubular Lantern.



No. 2 Reflector



1-inch Wick

No. 2 Globe

FOR KEROSENE.

Covered by Eight U. S. Letters Patents.

One illustration shows the Lantern with the Reflector and the Globe in place ready for use, the other shows the Lantern without the Reflector, and the Globe raised to light.

This is an extra large Lantern and is used principally in Mills, Mines and Storehouses.

The Reservoir holds sufficient oil to burn twenty-four hours.

Packed in cases of one-half dozen each, measuring $5\frac{1}{4}$ cubic feet. Average weight with cases, with Reflectors, 140 lbs. to the dozen; net, 76 lbs. Average weight with cases, without Reflectors, 114 lbs. to the dozen; net, 66 lbs.

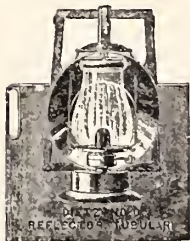
Prices.

| | |
|---------------------|--------------|
| With Reflector..... | each, \$1.50 |
| Without | " 1.25 |

R. E. DIETZ COMPANY

"DIETZ"

No. 0 Reflector Tubular Lantern.



No. 1 Long Core Burner.

1/4-inch Wick.



No. 0 Globe.

STANDARD SIZE. FOR KEROSENE.

Covered by Twelve U. S. Letters Patents.

The Globe can be raised for lighting.

The Hood is 6 inches deep, fitted with a 5-inch silvered Glass Reflector and a spring fastening for Dash.

It is a desirable Lantern for night driving, and will throw a strong light over one hundred feet.

Packed in cases of one-half dozen each, measuring $3\frac{1}{2}$ cubic feet. Average weight with cases, 76 lbs. to the dozen; net, 33 lbs.

Price, \$1.50 each.

R. E. DIETZ COMPANY.

“DIETZ”

No. 13 Tubular Side and Dash Lamp.



No. 1 Burner.

$\frac{1}{4}$ -inch Wick.



No. 9 Globe.

STANDARD SIZE FOR KEROSENE

Covered by Twelve U. S. Letters Patents.

One illustration shows the Lantern with the Globe raised for lighting, the other shows the Globe in place and the Lamp ready for use.

This is really a very handy combination; it serves as a hand Lantern and a Side or Dash Lamp.

We furnish it in bright tin and also japanned blue.

Packed in cases of one-half dozen each, measuring $3\frac{1}{4}$ cubic feet. Average weight with cases, 70 lbs. to the dozen; net, 28 lbs.

We furnish this lamp with our new Bull's Eye Lens—a bull's eye attached to the perforated plate. It is superior in every way to the bull's eye globe. Send for special circular.

Price, 90 cents each.

R. E. DIETZ COMPANY.

"DIETZ"

Tubular Driving Lamp.



FOR KEROSENE.

Covered by Two U. S. Letters Patents.

Can be placed on the Dash or at the side.

We consider this the only perfect Driving Lamp ever made. It is fitted with a beveled plate glass Lens, measuring $5\frac{3}{8}$ inches, finished in black japan or nickel plate.

The following Testimonials show what the public think of it:

DA SCOTT of Lexington, Ky. after using one says "I think at last I have found a perfect buggy light. It is neat, light, noiseless, a good Reflector, and does not blow out."

DA C. A. HUGHES, Spokane Falls, Wash., writes "I received Driving Lamp in perfect condition, and like it very much, as does my man, and think it has no equal."

H. P. NOTTAGE, M. D., Westport, Mass., writes "When a manufacturer makes a really good thing the public should know it. With your Driving Lamp I can drive with comfort on the darkest night, and can distinguish an approaching team at least two hundred feet away. The wind blew a gale, but the flame remained bright and was only slightly diminished."

P. G. FRANCISCUS, of Lewiston, Pa., writes "Your Driving Lamp, without exception, is the best by far of anything I ever saw or used. It is simply perfection."

Packed in cases of one-half dozen each, measuring $2\frac{1}{2}$ cubic feet. Average weight with cases, 56 lbs. to the dozen; net, 30 lbs.

Send for a book fully describing this lamp, with testimonial sheet.

Prices.

Japanned.....each, \$3.00. Nickel-plated.....each, \$3.50
Price of holders, 25 cents each.

"DIETZ"

U. S. Brass and Nickel-Plated Tubular Lantern.



No. 0 Burner

$\frac{3}{4}$ -inch Wick



U. S. Globe.

FOR KEROSENE

Covered by Eight U. S. Letters Patent.

One illustration shows the Lantern with the Globe raised for lighting, the other shows the Globe in place and the Lantern ready for use.

This is the smallest Tubular Lantern that we make. We furnish it in brass and nickel plate only.

Packed in cases of one dozen each, measuring $1\frac{3}{4}$ cubic feet. Average weight with case, 25 lbs. to the dozen; net, 15 lbs.

Prices.

| | |
|---------------------------|--------------|
| Brass..... | each, \$1.00 |
| Brass, nickel-plated..... | " 1.25 |

R. E. DIETZ COMPANY,

"DIETZ"

No. 0 Square Lift Tubular Lantern.

BRASS AND NICKEL-PLATED (POLISHED).



No. 1 Burner

$\frac{1}{2}$ -inch Wick



No. 0 Globe

STANDARD SIZE FOR KEROSENE.

Covered by Thirteen U. S. Letters Patents.

One illustration shows the Lantern with the Globe raised for lighting, the other shows the Globe in place and the Lantern ready for use.

They are made of heavy brass. Are handsomely polished and finished with two coats of lacquer. They will hold their color and always remain bright. The same Lantern is also made in nickel-plate.

We have Ruby, Blue and Green Globes for this Lantern.

Packed in cases of one-half dozen each, measuring $2\frac{1}{2}$ cubic feet. Average weight with cases, 60 lbs. to the dozen; net, 32 lbs.

This is the most elegant Tubular Lantern made. It is suitable for a present. We furnish it also with half Ruby, half Blue, or half Green Globes.

Prices.

Brass.....ea., \$2.00; Brass, nickel plated, ea., \$2.50
With half Green or half Blue Globes.....ea., 5.00
With half Ruby Globesea., 5.50

R. E. DIETZ COMPANY.

"DIETZ"

Tubular Fire Department Lantern.



No. 1 Burner.

3/4-inch Wick.

No. O Flint Globe.

FOR KEROSENE.

Covered by Seven U. S. Letters Patents.

Our Fire Department Lanterns have all our latest improvements. Are made extra heavy, with large double Oil Pots.

We make one style all of tin; one style tin, with copper Oil Pot; one style all of brass. Either of above styles can be nickel-plated.

Adopted by the American Fire Engine Company and the principal fire departments and insurance patrols in the United States.

Packed in cases of one dozen each, measuring 5 1/4 cubic feet. Average weight with case, 70 lbs to the dozen; net, 40 lbs.

Fitted with our patent Wind Break Guard.

Send for special circular about Fire Dep't Lanterns.

PRICE

| | |
|---------------------------|--------------|
| Tin..... | \$2.00 Each. |
| With Copper Oil Pot..... | 2.50 " |
| Brass..... | 3.50 " |
| Brass, Nickel-Plated..... | 4.00 " |

R. E. DIETZ COMPANY

"DIETZ"

Square Lift Brass Tubular Fire Department Lantern.



No. 1 Burner.

3/4-inch Wick

No. 0 Globe.

FOR KEROSENE.

This is a good strong lantern, made of heavy brass and fitted with our patent Wind Break Guard.

It is cheaper in price than our regular brass round tube Fire Dep't Lantern.

Packed in cases of one half dozen, measuring $5\frac{3}{4}$ cubic feet, and weighing, gross, 58 lbs ; net, 32 lbs.

Send for special circular about Fire Dep't Lanterns.

PRICE. *

| | |
|--------------------|--------------|
| Brass | \$2.50 Each, |
| Nickel-Plated..... | 3.00 " |

R. E. DIETZ COMPANY.

"DIETZ"

Nos. 15 and 17 Tubular Side Lamp.



These lamps operate on the same principle as our tubular lanterns, and are not affected by wind, never heat, and are perfectly safe. Can be lit, filled and regulated without removing the globe. They are Japanned blue, and are unsurpassed for use in shops, halls and factories.

No. 15 has $\frac{5}{8}$ -inch burner and wick, No. 0 Globe and 5-inch silvered glass reflector, packed in cases of one half dozen, complete with reflectors, measuring $2\frac{1}{2}$ cubic feet and weighing gross, 26 lbs.; net, 13 lbs.

No. 17 has 1-inch burner and wick, No. 1 Globe and 6-inch silvered glass reflector, packed in cases of one half dozen, complete with reflectors, measuring $2\frac{1}{2}$ cubic feet, weighing gross, 32 lbs.; net, 13 lbs.

PRICE.

| | |
|-------------|--------------|
| No. 15..... | \$1 25 Each, |
| No. 17..... | 1.50 " |

"DIETZ"

TUBULAR STREET LAMPS.

THE following illustrations show our well-known makes of Square and Globe Tubular Street Lamps as well as our Globe Hanging Lamps and Tubular Square, and Triangular Lamps

THEY HAVE NO EQUAL.

No Chimney Brilliant flame, outside wick regulator Founts hold sufficient oil to burn twenty-four hours With our Automatic Extinguishing Attachment, our Street Lamps can be regulated to burn a certain number of hours

Will endure the strongest wind, are but little more care than gas, and will give a better light at about one-third the cost

We also illustrate our other Street, Square, and Triangular Station Lamps.

Send for special circular about our Street and Hanging Lamps.

R. E. DIETZ COMPANY

"DIETZ"

No. 2 Square Tubular Street Lamp.



No. 3 Burner

1 1/4-inch Wick

3-inch Flame

FOR KEROSENE.

Turned Wood
Post

Covered by Two U. S. Letters Patent

No Chimney. Light equal to gas at a less cost. Brilliant Flame. Will not blow out in the strongest wind. Automatic Extinguisher. Can be regulated to burn a certain number of hours. Warranted to give satisfaction.

Packed one each in a case, measuring 3 1/4 cubic feet. Average weight with case, 43 lbs.; net, 13 lbs. 36 inches high, 15 1/4 inches square.

Send for special circular.

Prices.

Lamp.....each, \$5.50. Brackets.....each, \$1.00
Posts, each, \$2.50.

R. E. DIETZ COMPANY

"DIETZ"

No. 3 Globe Tubular Street Lamp.



No 3 Burner

1½-Inch Wick

No 3 Globe.

Turned Wood Post.

FOR KEROSENE

Covered by Seven U. S. Letters Patents

Warranted to give perfect satisfaction. More sold than all other makes combined
 No Chimney. Light equal to gas at a less cost. New Globe Lifter Outside
 Wick Regulator. Does not smoke. Casts no shadow
 Will not blow out in the strongest wind.
 Can be regulated to burn a certain number of hours
 Packed one each in a case, measuring 3½ cubic feet. Average weight with case,
 30 lbs., net, 9½ lbs. 27 inches high

Send for special circular.

Prices.

Lamp.....each, \$4.00. Brass.....each \$5.50
 Tin, with brass fount, each, \$4.50

"DIETZ"

No. 3 Globe Tubular Street Lamp.



Fount and Burner.
FOR No. 3 GLOBE STREET LAMP



No 3 Iron Bracket
FOR No. 3 GLOBE STREET LAMP



Turned
Wood
Post.

FOR KEROSENE.

Showing the Fount and Burner removed

This Lamp never fails to give perfect satisfaction. It can be filled, lighted and regulated without removing the Globe.

We make them in tin and brass. The Reflector is painted white and the Lamp is painted green.

With our iron Bracket it makes a useful and ornamental fixture. Warranted to give perfect satisfaction.

Send for special circular.

Prices.

Brackets.....each, \$1.00. Posts.....each, \$2.50
Fount and Burner, \$1 00

R. E. DIETZ COMPANY

"DIETZ"

Corporation Street Lamp.



No. 1 Burner.

1-inch Wick.

No. 1 Sun Chimney



Turned Wood
Post.

FOR KEROSENE.

This Lamp is fitted with a glass Oil Fountain, Kerosene Burner and Chimney, and has a removable cast-iron Socket that will fit a post or bracket.

The upper part of Lamp is removable and they nest close for shipment.

Packed one each in a case, measuring 3 cubic feet. Average weight with case, 40 lbs.; net, with Socket, 15 lbs. Height, 32 1/4 inches.

Send for special circular.

Price, \$3 00 each.

R. E. DIETZ COMPANY

"DIETZ"

New York Street Lamp.



No. 1 Burner.

1400b Wick

No. 1 Sun Chimney

FOR KEROSENE.



Turned Wood
Post.

This Lamp with Socket is 27 inches high. Is fitted with a tin Oil Fount, Burner and Chimney. The tin Socket will fit either bracket or post. The top of this Lamp is made of corrugated tin, and acts as a Reflector to throw the light down.

Packed one each in a case, measuring $3\frac{1}{2}$ cubic feet. Average weight with case 33 lbs. net 21 $\frac{1}{2}$ lbs.

Send for special circular.

Price, 2.50 each.

R. E. DIETZ COMPANY

"DIETZ"

No. 2 Globe Tubular Side and Hanging Lamp.



No. 2 HANGING LAMP.



No. 2 SIDE LAMP.

No. 2 Burner.

1-inch Wick.

No. 2 Globe.

FOR KEROSENE.

Covered by Seven U. S. Letters Patents

No Chimney Will not blow out. Does not smoke Has outside Wick Regulator.

The Side Lamp has a patent Movable Reflector Attachment, and is fitted with an 8-inch silvered glass Reflector.

One size smaller than our No.

Packed one each in a case, measuring $2\frac{1}{2}$ cubic feet. Average weight with case, 23 lbs.; net, $7\frac{1}{4}$ lbs. 20 inches high

Send for special circular.

Prices.

| | |
|-------------------------|--------------|
| No. 2 Hanging Lamp..... | each, \$3.25 |
| No. 2 Side Lamp..... | " 4.00 |

R. E. DIETZ COMPANY.

"DIETZ"

Improved Tubular Square Lamp.

THREE SIZES, Nos. 1, 2 and 3.



FOR KEROSENE

Covered by Three U. S. Letters Patents

| | | |
|--------------|--------------|----------------------------------|
| | No 1 | |
| No. 1 Burner | 4-inch Wick | 6-inch Silvered-glass Reflector |
| | No 2 | |
| No. 2 Burner | 4½-inch Wick | 8-inch Silvered-glass Reflector |
| | No 3 | |
| No. 3 Burner | 4½-inch Wick | 12-inch Silvered-glass Reflector |

No Chimney Improved Burner. Does not smoke Outside
Wick Regulator Light equal to gas, at a less cost
Will not blow out in the strongest wind.
Packed one each in a case.

No. 1 packed measures 1½ cubic ft. Gro. weight, 16 lbs., net weight, 6 lbs. 19 ins. high.
" 2 " " " " " " " " 23 " " " 9 " 21½ " "
" 3 " " " " " " " " " 40 " " " 13½ " 26 " "

Prices.

No. 1.each, \$4.00
No. 2.....each, 5.00
No. 3.....each, 6.00

R. E. DIETZ COMPANY.

"DIETZ"

No. 4 Tubular Triangular Lamp



No. 3 Burner.

1/2-inch Wick.

3-inch Glass

FOR KEROSENE.

Covered by Three U. S. Letters Patents

No Chimney. Improved Burner. Does not smoke. Light equal to gas, at a less cost. Flame regulated from the outside.

Will not blow out in the strongest wind.

Reflector arranged to throw light in three different directions.

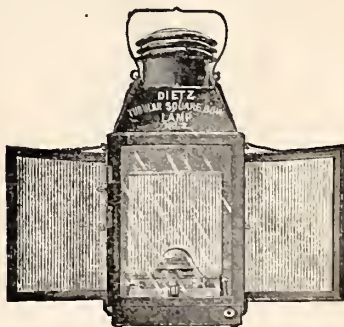
Packed one each in a case, measuring $3\frac{1}{3}$ cubic feet. Average weight with case, 34 lbs.; net, $10\frac{1}{4}$ lbs. $21\frac{1}{4}$ inches high.

Price, \$6.00 each.

R. E. DIETZ COMPANY.

"DIETZ"

No. 2 Tubular Square Bow Lamp.



No. 3 Burner

1½-inch Wick.

3-inch Flame

FOR KEROSENE

Covered by Three U. S. Letters Patents

No Chimney. Improved Burner Does not smoke. Light equal to gas, at a less cost. Flame regulated from the outside.

Will not blow out in the strongest wind

Side Wings and Back fitted with corrugated silver-glass Reflectors.

Specially designed for use on bridges, canal and tug boats.

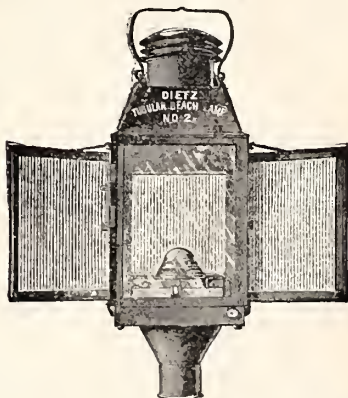
Packed one each in a case, measuring 2 cubic feet. Average weight with case, 26¾ lbs., net, 12¾ lbs. 21½ inches high.

Price, \$7.00 each.

R. E. DIETZ COMPANY.

"DIETZ"

No. 2 Tubular Square Beach Lamp.



No. 3 Burner

1 1/2 inch Wick

4 inch Flame.

FOR KEROSENE.

Covered by Three U. S. Letters Patents.

No Chimney. Improved Burner. Does not smoke. Flame regulated from the outside.

Will not blow out in the strongest wind

Side Wings and Back fitted with corrugated silvered-glass Reflector,

Made with Socket, to use on post or staff.

Used extensively by the United States Life Saving Service along the coast.

Packed one each in a case, measuring 31 1/2 cubic feet. Average weight with case, 34 lbs.; net, 13 lbs. 25 1/4 inches high.

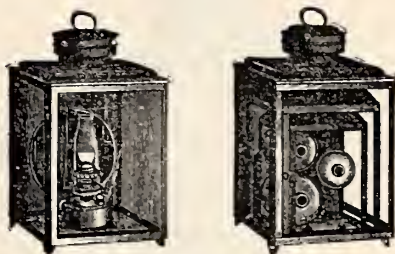
Price, \$7.50 each.

R. E. DIETZ COMPANY

"DIETZ"

Square Station Lamp.

THREE SIZES, Nos 1, 2 and 3



FOR KEROSENE

| | | | | |
|-------|-------------------|-------------------|----------------|-----------------------------------|
| No. 1 | 6x10 inches. | Has No. 1 Burner. | 3/4-inch Wick. | 7-inch Silvered glass Reflector. |
| No. 2 | 10x12 inches. | Has No. 2 Burner. | 1-inch Wick. | 8-inch Silvered glass Reflector. |
| No. 3 | 11x15 1/2 inches. | Has No. 3 Burner. | 1-inch Wick. | 10-inch Silvered glass Reflector. |

Packed one each in a case, complete with Fount, Burner, Chimney and silvered-glass Reflector, or the three sizes nested together are packed in one case.

| | | | | | | | | | |
|-------|----------|-------|-------------|---------------|---------|-------------|--------|---------|------------|
| No. 1 | measures | 1 1/2 | cubic feet. | Gross weight, | 15 lbs. | net weight, | 5 lbs. | 15 1/2 | ins. high. |
| " 2 | " | 1 7/8 | " | " | 20 " | " | " | 6 1/2 " | 1 3/4 " |
| " 3 | " | 2 3/4 | " | " | 25 " | " | " | 9 " | 2 1/4 " |

Prices.

| | | | |
|--------|-------|-------|--------|
| No. 1. | | each, | \$2.25 |
| No. 2. | | " | 2.50 |
| No. 3. | | " | 2.75 |

R. E. DIETZ COMPANY.

"DIETZ"

Triangular Station Lamp.

TWO SIZES, Nos. 2 and 3.



FOR KEROSENE.

| | | | |
|-----------|---------------|--------------|-----------------------------------|
| No. 2 has | No. 2 Burner. | 1-inch Wick. | 8-inch Silvered-glass Reflector. |
| No. 3 has | No. 3 Burner. | 1-inch Wick. | 10-inch Silvered-glass Reflector. |

Packed one each in a case, complete with Fount, Burner, Chimney and silvered-glass Reflector.

No. 2 measures 2½ cubic feet. Gross weight, 21½ lbs. net weight, 8½ lbs. 18¼ ins. high.
 " 3 " 3¼ " " " " 25 " " " 13 " 18¼ " "

Prices.

No. 2.....each, \$2.50. No. 3.....\$2.75

R. E. DIETZ COMPANY.

"DIETZ"

Nos. 3 and 8 Conductors' Lantern.



No. 3



No. 8 (WIRE BASE)

16-inch Ratchet Burner.

BURNS LARD OIL

Finely finished brass and nickel-plated (also gold and silver-plated).

Hinged Top. Globe removable.

Furnished with half ruby, green or blue, or plain flint Globe.

Prices.

No. 3, Brass, \$4.00 ea.; nickel-plated, \$4.50 ea.; silver-plated, \$11.00 ea.; gold-plated, \$27.00 ea.

No. 8, brass, \$4.50; ea., nickel-plated, \$5.00 ea.; silver-plated, \$11.50 ea.; gold-plated, \$30.00 ea.

Add for half green or half blue Globes, \$1.50; half ruby, \$2.00 ea. Add for engraving name on globe, \$1.00; name with wreath, \$1.50.

R. E. DIETZ COMPANY.

"DIETZ"

No. 39 Railroad Lantern.



SINGLE GUARD.



DOUBLE GUARD.

STANDARD SIZE. BURNS LARD OIL.

Made in tin, brass and nickel-plated,

Bail fastened to the Guard.,

With tin or glass Oil Pots.

Bayonet catch or Sangster spring Oil Pots.

Hinged Top and removable Globe.

Packed in cases of one dozen each, measuring $4\frac{1}{2}$ cubic feet.

Average weight with case, 45 lbs. to the dozen; net, 25 lbs.

Prices.

Tin.....each, 80 cents. Brass... ..each, \$2.50
Brass, nickel-plated, each, \$3.00

R. E. DIETZ COMPANY.

"DIETZ"

No. 39 Wire Bottom Railroad Lantern.



BURNS LARD OIL

Hinge Top. Removable Globe. Wire Bottom. Casts no shadow.

Bail fast to Guard. Bayonet catch on Oil Pot.

Packed in cases of one dozen each, measuring $4\frac{1}{2}$ cubic feet.

Average weight with case, 49 lbs. to the dozen; net, 29 lbs.

Prices.

Tin.....each, 80 cents. Brass.....each, \$2.50

Brass, nickel-plated, each, \$3.00

R. E. DIETZ COMPANY.

"DIETZ"

A No. 1 Lantern.



No. 1. Coaxial Burner.

1/2 inch Wick.

No. 0 Tubular Globe.

FOR OIL, CANDLE OR KEROSENE.

Hinged Top. Fitted with 0 Tubular Globe.

Bail fast to Guard. Sangster spring on Oil Pot.

A heavy, strong Lantern, for general use.

We have Ruby, Blue and Green Globes for this Lantern.

Packed in cases of one dozen each, measuring 3 1/2 cubic feet,
Average weight with case, 39 lbs. to the dozen; net, 24 lbs.

Each lantern has a burner for oil, one for kerosene and a candle-holder.

Price, 60 cents each.

R. E. DIETZ COMPANY

"DIETZ"

No. 74 Lantern.



No. 8 Convent Burner.

1/8-inch Wick.

No. 0 Tubular Globe.

FOR OIL, CANDLE OR KEROSENE.

Our lowest priced Hinge-top Lantern, Sangster spring on Oil Pot.

We have Ruby, Blue and Green Globes for this Lantern.

Packed in cases of one dozen each, measuring 24 cubic feet.

Average weight with case, 33 lbs. to the dozen; net, 18 lbs.

Each lantern has a burner for oil, one for kerosene and a candle-holder

Price, 50 cents each.

R. E. DIETZ COMPANY.

"DIETZ"

New Farm Lantern.



FOR OIL. CANDLE OR KEROSENE.

A Cheap Square Lantern.

A light of 7 x 9 window glass, cut in three equal pieces, forms three lights for the sides

Packed in cases of one dozen each, measuring 2½ cubic feet
Average weight with case, 30 lbs. to the dozen; net, 18 lbs.

Each lantern has a burner for oil, one for kerosene and a candle-holder.

Price, 40 cents each.

R. E. DIETZ COMPANY.

"DIETZ"

Bull's-Eye Police Lantern.

FLASH LIGHT AND REGULAR



FLASH POLICE LANTERN



REGULAR POLICE LANTERN

BURNS SPERM OIL

Our Flash Light is patented.

Each style made in two sizes. Japanned.

Small size, 2¼ inches. Height, 7¼ inches

Medium size, 3 inches. Height, 7½ inches.

The light in our Flash Lantern is controlled by a lever with the thumb pressure. The effect is instantaneous.

Packed in cases of two dozen each, measuring 24 cubic feet.
Average weight with case, 40 lbs. to the two dozen; net, 28 lbs.

Prices.

| | | |
|---------------------------|-----------|-------------------|
| Regular, 2¼ inch..... | 40 cents; | 3 inch, 50 cents, |
| Flash Light, 2¼ inch..... | 50 " | 3 " 60 " |

R. E. DIETZ COMPANY.

DIETZ

Pocket Lantern.



FOR KEROSENE.

A compact Pocket Lantern Made from decorated tin.

No amateur photographer's outfit is complete without one.

With plain glass it throws a large volume of light.

Size $5\frac{1}{2}$ by $2\frac{1}{2}$ by $1\frac{1}{4}$ inches.

Packed in pasteboard boxes of one dozen each. Packed in cases of six dozen each, measuring 27 cubic feet. Average weight with case, 51 lbs.; net, 38 lbs.

Prices.

50 cents each; with Ruby Glass, 60 cents each.

R. B. DIETZ COMPANY.

"DIETZ"

Racket Brass Lantern.



No. 1 Convex Burner

4-inch Wick.

Racket Oil-burner

FOR KEROSENE.

Best small brass Lantern made.

Simple in construction Easily taken apart.

Lighted and regulated from the outside.

It is very popular and commands a large sale.

Packed in cases of six dozen each, measuring 5½ cubic feet.

Average weight with case, 90 lbs.; net, 60 lbs.

Price, 60 cents each.

R. E. DIETZ COMPANY

"DIETZ"

Boy and Baby Brass Lanterns.



BOY.



BABY.

FOR KEROSENE.

BOY.

Similar in construction but smaller than the "Racket."

No. O Convex Burner, lights and regulates from the outside.

Packed in cases of six dozen each, measuring 3½ cubic feet.

Average weight with case, 65 lbs.; net, 36 lbs.

BABY

Smallest Lantern made Firefly Burner.

Makes a perfect night light

Draughts do not affect it

Packed in cases of twelve dozen each, measuring 1¾ cubic feet.

Average weight with case, 35 lbs.; net, 24 lbs.

Prices.

Boy.....each, 40 cents. Baby.....each, 25 cents.

R. E. DIETZ COMPANY.

"DIETZ"

Cross-Piece and Iron Brackets.

FOR STREET LAMPS,



Iron Cross-Piece for Turned Street Lamp Post.



Short Bracket for Street Lamp.
12 INCHES LONG.



Ornamental Bracket for Street Lamp.
20 INCHES LONG.



Turned Wood
Post.

Prices.

Posts.....each, \$2.50. Brackets.....each, \$1.00
Cross-pieces, each, \$1.00

R. E. DIETZ COMPANY

"DIETZ"

Attachments for Tubular Lanterns.



Warner Tubular Lantern Holder.

PATENTED.

For holding a Tubular Lantern under the body of a Wagon.

FOR NIGHT DRIVING.



Coulter Tubular Lantern Holder.

PATENTED.

For holding a Tubular Lantern under the body of a Wagon.

FOR NIGHT DRIVING.

BULL'S EYE LENS.

ATTACHED TO PERFORATED PLATE.



For all our lift wire lanterns taking No. O Globe Takes the place of Bull's Eye globes. No breakage, and better in every way.

PRICE.

| | |
|--------------------------------|--------------|
| Warner Holders | 25cts. Each. |
| Coulter Holders..... | 25cts. " |
| Bull's Eye Lens, on Plate..... | 13cts. " |

"DIETZ"

TUBULAR OIL AND GAS STOVES

HAVE been greatly improved since first introduced. They are now-fitted with our Improved Patent Burner. Have cemented joints, causing them to operate quicker. The Filler Opening is arranged so that you can see the oil. The Removable Extension Shelf can be placed at either side. New method of securing Burner Plate to Oil Chamber, with packing underneath. Legs attached to iron Base Frame.

Absolutely free from smoke or odor

TO SELL THE STOVE, SHOW IT!

Keep one burning. Trial and use will demonstrate its superiority. Be guided by the simple directions.

Our Stoves being made from cast iron, with ordinary use they should last forever. If the Burners or Oil Chambers give out they can easily be replaced at a small cost.

Send for Cook Book telling all about our Stoves.

"DIETZ"

The No. 4 Improved Tubular Oil Stove.



BURNS KEROSENE WITHOUT SMOKE OR ODOR
No. 4 Stove with four 4-inch burners, four-hole top.

NO TASTE OF OIL.—Although the heat from the flames passes directly in and around the food, the combustion is so perfect, that not the least odor or taste of Kerosene can be detected in any article of food prepared with the Tubular Oil Stove.

IMPORTANT.—You should always buy the following Stove Furniture with the Stove: Patent Oven, Patent Broiler and Laundry Iron Heater. They are specially constructed for the "Dietz" Tubular Stove. No other make can be used. Will do the cooking for an entire family.

Each Stove is provided with a movable Shelf, 9x12 inches, that can be placed on either side of Stove.

These Stoves, in their present form, are a complete success.

Prices.

| | | |
|--|-------------------------|---------|
| Tabular Oil Stove No. 4, Four Burners..... | each, | \$13.00 |
| Oven with two pans | } Fits No. 4 Stoves.... | " 3.00 |
| Broiler | | " 1.00 |
| Iron Heater..... | | " .50 |

Crated complete, No. 4, \$17.50.

Patent Steam Cooker, \$2.50; Kettle and Saucepan, \$1.00
Stove Wicks, 4-inch, per doz., 30 cents.

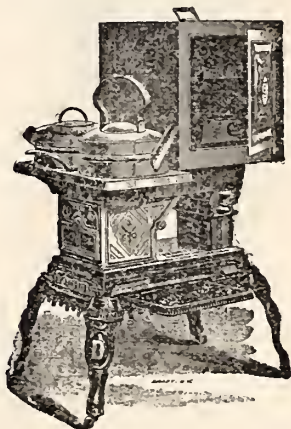
By purchasing the upper part of No. 4 Radiator, you can convert the No. 4 Cook Stove into a Heating Stove, at the small cost of \$6.00.

Send for book.

R. E. DIETZ COMPANY.

"DIETZ"

The No. 4 Improved Tubular Oil Stove.



NO. 4 STOVE (IMPROVED), WITH FOUR 4-INCH BURNERS.

BURNS KEROSENE WITHOUT SMOKE OR ODOR.

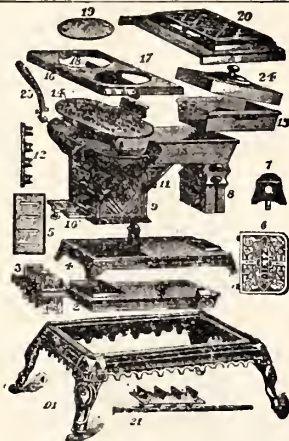
SIZE AND WEIGHT OF NO. 4 STOVE AND OVEN.

Size of Stove: 21 inches long, 14 inches wide, 25 inches high.
Gross weight, crated for shipment, 101 lbs.; net, 91 lbs.

Size of Oven: 15 inches long, 14 inches wide, 15 inches high.
Gross weight, crated for shipment, with two Pans, 20 lbs. Gross weight, crated for shipment, with two Pans, Broiler and Iron Heater, 27 lbs.

Oil Chamber holds five quarts of oil, sufficient to burn ten or twelve hours.

Send for Book.



DESIGNATION OF PARTS OF No. 4 STOVE..

| No. | Each | No. | Each |
|--|--------|--|------|
| 1—Iron Base Frame, with Legs, for Oil Chamber..... | \$2.00 | 12—Iron Cones in Flame Chamber..... | 50 |
| 2—Kerosene Oil Chamber (galvanized iron)..... | 1.00 | 13—Iron Heating Chamber, or top of Stove..... | 1.50 |
| 3—Wick Tubes attached to Plate..... | 1.00 | 14—Laundry Iron Heater, for inside of front Chamber..... | 50 |
| 4—Iron Air Chamber..... | 1.00 | 15—Iron Broiling Pan and Frame..... | 75 |
| 5—Perforated Tin Plate under Cone..... | 20 | 16—Iron Front Top Plate, two openings..... | 40 |
| 6—Iron Extension Shelf..... | 40 | 17—Iron Centre Division Plate..... | 20 |
| 7—Iron Support for Stove when trimmed..... | 10 | 18—Iron Cross-plate..... | 20 |
| 8—Iron Air Injector, to convey air to Chamber..... | 1.00 | 19—Iron 8-inch Cover..... | 10 |
| 9—Iron flame or combustion Chamber..... | 1.25 | 20—Iron Double-top Back Grate..... | 1.50 |
| 10—Mica Plate Door..... | 40 | 21—Gas Burner to use in place of Oil..... | 2.00 |
| 11—Iron Rolling Plate, to direct the heat..... | 20 | 22—Tin Oven, with two Pans..... | 3.00 |
| | | 23—Iron Cover Lifter..... | 10 |
| | | 24—Tin Cover to Broiler..... | 25 |
| | | Stove Legs, each..... | 25 |

If parts of this Stove are wanted, order by numbers as above. The four principal parts—Base Frame (1), Oil Chamber (2), Air Chamber (4), and the body of the Stove (13)—are easily separated and cleansed, if needed, and replaced in a few minutes without the use of tools.

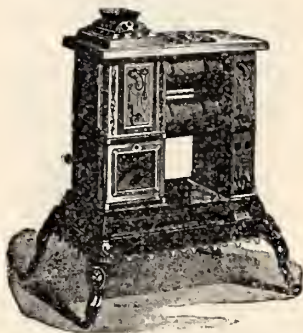
IMPORTANT.—These Stoves should always be sold with the following Furniture: PATENT OVEN, PATENT BROILER and LAUNDRY IRON HEATER. They are specially constructed for the Tubular Stove. No other make will suit. Send for book.

R. E. DIETZ COMPANY.

"DIETZ"

No. 4 Tubular Radiator.

COMPLETE WITH BASE.



No. 4 TUBULAR RADIATOR, WITH FOUR 4-INCH BURNERS.

BURNS KEROSENE WITHOUT SMOKE OR ODOR.

This Radiator is a complete success. It will comfortably warm a room twenty feet square, in the coldest weather.

SIZE AND WEIGHT

Size: 21 inches long, 14 inches wide, 30 inches high. Gross weight, crated for shipment, 92 lbs.; net, 78 lbs.

Oil Chamber holds five quarts of oil, sufficient to burn ten or twelve hours. This Radiator fits on base of No. 4 Cook Stove.

Prices.

| | |
|---|---------|
| Radiator, with base, complete, crated.....each, | \$12.00 |
| Radiator only, crated..... | " 6.00 |
| Cooking Part only, crated..... | " 7.00 |

Send for Book.

"DIETZ"

No. 4 Tubular Parlor Heater.



NO. 4 TUBULAR PARLOR HEATER, WITH FOUR 4-INCH BURNERS.

BURNS KEROSENE WITHOUT SMOKE OR ODOR.

This Stove is very ornamental. It is indispensable for heating Parlors, Offices or Conservatories. Sufficient heat is generated to keep an ordinary room twenty feet square comfortably warm during Winter weather. The Mica Dome is removable, leaving an opening for a kettle.

Gross weight, 99 lbs.; Net weight, 86 lbs.

Price.

No. 4 Parlor Heater, crated.....each, \$15.00
Send for Book.

R. E. DIETZ COMPANY.

"DIETZ"

No. 2 Improved Tubular Fire-Place Heater.

WITH HIGH STAND



No. 2 (IMPROVED) FIRE-PLACE HEATER WITH TWO 4-INCH BURNERS.

BURNS KEROSENE WITHOUT SMOKE OR ODOR.

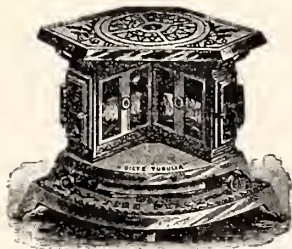
Suitable for Alcoves, Conservatories, Offices, Bath, Bed and Sitting Rooms. It is easily filled, regulated and lighted, and gives eight inches of Flame. Throws the heat above and below, the latter being sufficient to warm the feet. Besides heating an ordinary sized room, it illuminates it, as well.

Price.

No. 2 (Improved) Fire-place Heater, crated, each, \$6.00

"DIETZ"

No. 2 Tubular Fire-Place Heater.



NO. 2 TUBULAR FIRE-PLACE HEATER, WITH TWO 4-INCH BURNERS.

BURNS KEROSENE WITHOUT SMOKE OR ODOR.

This Stove is the same as the No. 2 Improved, except that it has a Low Stand.

SIZE AND WEIGHT.

No. 2 (Improved) is 21 $\frac{1}{4}$ inches wide, 18 inches high, and weighs, crated, 44 lbs.; net 37 lbs.

No. 2 Stove is 20 inches wide, 18 $\frac{1}{4}$ inches high, and weighs, crated, 38 lbs.; net, 29 lbs.

Thousands of these Stoves have been sold the past three years, and their sale is increasing, which is proof that they give satisfaction.

Price.

No. 2 (Improved) Fire-place Heater, crated, each, \$6.00

R. E. DIETZ COMPANY.

"DIETZ"

New Steel Fount Oil Stove.

Nos. 1 and 2.



No. 1. Closed.

One 4-inch Burner



No. 2. Closed.

Two 4-inch Burners.

The founts are made from two sheets of tinned steel plate seamed together, and the Japanned iron base fits snugly around the seam on center of fount.

They give a clear white flame, intense heat.

They are undoubtedly the lightest, prettiest and best burning small oil stoves on the market.

No. 1, packed in cases of $\frac{1}{2}$ dozen, gross, 35 lbs ; net, $15\frac{3}{4}$ lbs,
 No. 2, " " " $\frac{1}{2}$ " " " 55 " " 27 "

PRICE.

| | |
|-----------------|--------------|
| No. 1 | 85cts. Each. |
| No. 2 | \$1.70 " |

"DIETZ"

New Double Cylinder Gas Heating Stoves,

Nos. 20, 30 and 40.

A VERY
POWERFUL
AS
WELL AS A
CHEERFUL
HEATER.



CHEAPER
THAN COAL
OR WOOD,
AND
DECIDEDLY
CLEANER.

Size No. 20 is 12 inches wide, 33 inches high.

Size No. 30 is 18½ inches wide, 25½ inches high.

Size No. 40 is 18½ inches wide, 28 inches high.

To obtain the best results, these stoves should have an independent connection.

PRICE.

EACH.

| | | |
|---------------------------|-------|--------|
| "Dietz" No. 20 Gas Stove. | | \$5 00 |
| " 30 " " | | 6 50 |
| " 40 " " | | 8 00 |

GERMAN SILVER DEPARTMENT

BRISTOL BRASS AND CLOCK CO.,

Bristol, Conn.,

MANUFACTURERS OF

ALL GRADES

PLATED AND

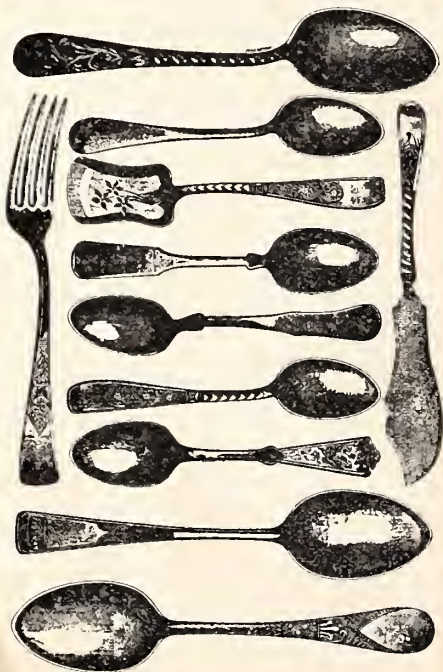
GERMAN SILVER

FLATWARE.

SEE CUTS OPPOSITE PAGE.

Catalogue and Prices on Application.

BRISTOL BRASS AND CLOCK CO., BRISTOL, CONN.



IMPROVED SECURITY BURNER.



PAT. AUG. 30TH, 1892.

OH DEAR I'VE BURNED MY HAND AGAIN



BUY *THE* SECURITY & YOU'LL HAVE NO TROUBLE



It Secures the Chimney in Place.

It Secures a Steady Light,

It Secures Better Combustion.

It Secures against Accidents.

It Secures against Breakage of Chimney.

It Secures a Safe Hand Lamp to carry about the house,

BRISTOL BRASS & CLOCK CO.,

Bristol Brass and Clock Company.

NEW YORK.

GEORGE S. BROWN, Agent.

MANUFACTURERS OF

KEROSENE BURNERS AND LAMP TRIMMINGS.

Library, Banquet, Hall and Parlor

LAMPS,

IN A GREAT VARIETY OF STYLES.

Everything in the Metal Lamp Line

AT THE LOWEST PRICES.

OUR SPECIALTY :

Goods for the
Export Trade.

THE BRISTOL CENTRE DRAFT LAMP.

A cut of which is here presented, is the Most
Perfect Lamp in every respect, ever placed upon
the market.

Get the Bristol Goods from your Dealer,

ESTABLISHED 1850.



LIBRARY LAMP.



BRISTOL LAMP.

This is a complete Catalogue
of our Tubular Lamps, Lan-
terns and Oil Stoves, and if
you do not need any now, you
should keep it for reference
when you do.

Sold by dealers generally.