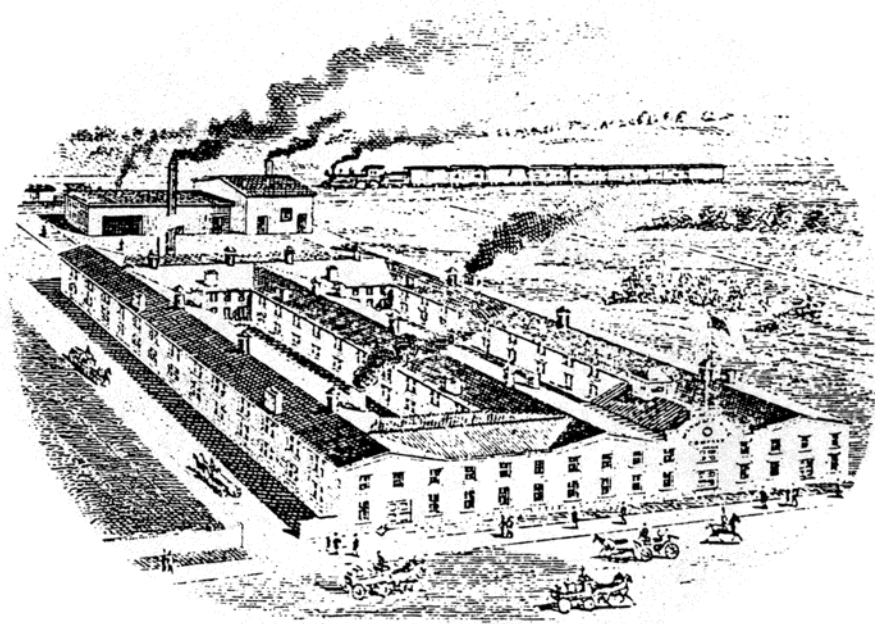


PRICE LIST

TUBULAR LANTERNS

THE WINFIELD MANUFACTURING CO.



ILLUSTRATED PRICE LIST

—OF—

TUBULAR LANTERNS

MANUFACTURED BY

THE WINFIELD MANUFACTURING CO.,

WARREN, OHIO.

— ••• —

WARREN McARTHUR,

Exclusive Sales Agent,

46 Lake Street,

CHICAGO, ILL.

In Submitting the accompanying illustrations of Tubular Lanterns we are offering only what is in every way desirable, and our several special features of construction are worthy of consideration.

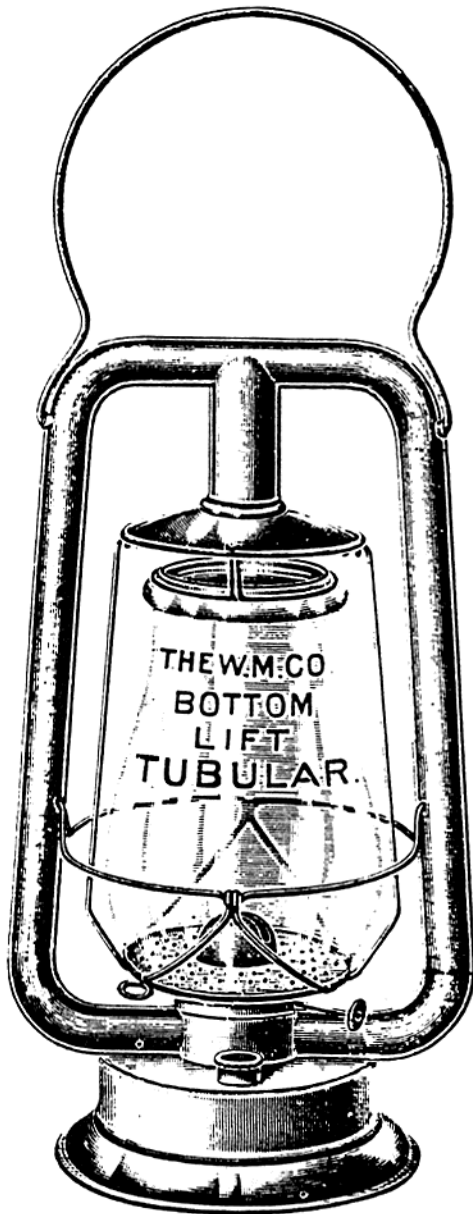
The Bottom Lift, guard and arrangement for holding the globe in its raised and lowered position are combined, and while simple in construction, is accurate in operation and we believe is the most practical lifting and locking device in use on Tubular Lanterns.

The Side Lift is a Lever Movement attached to the air tube, which raises and lowers the globe, and an oil-tempered spring connects the Globe pan with the lever and serves to securely lock the globe frame in both its raised and lowered position.

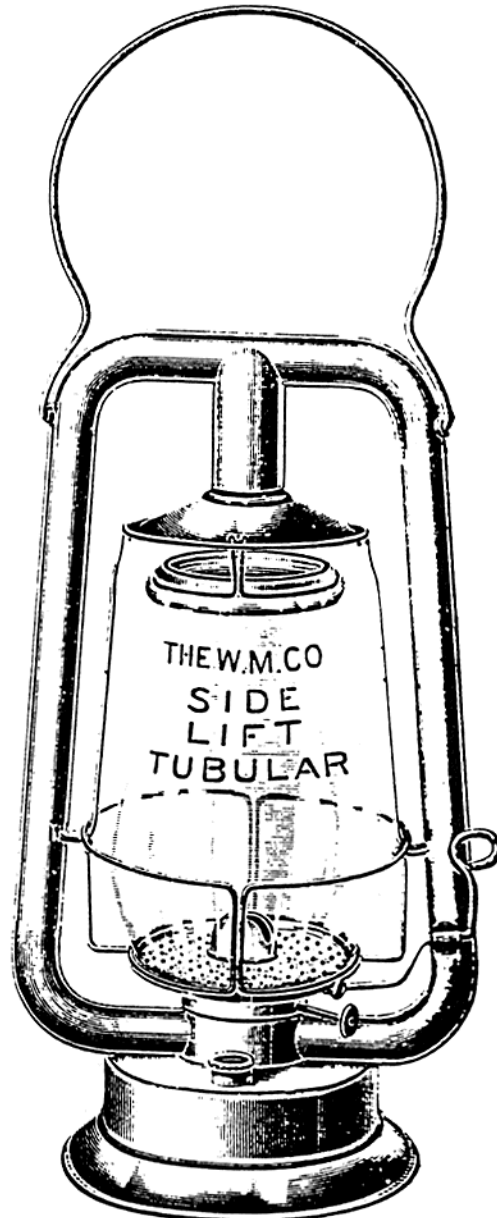
The Burner is securely locked in all of these lanterns, but are easily removed when desired.

The Air Tubes are two-piece stamped, and designed to give quick circulation and perfect combustion, which is the life of a tubular lantern when in use.

THE WINFIELD MANUFACTURING COMPANY.



BOTTOM LIFT.



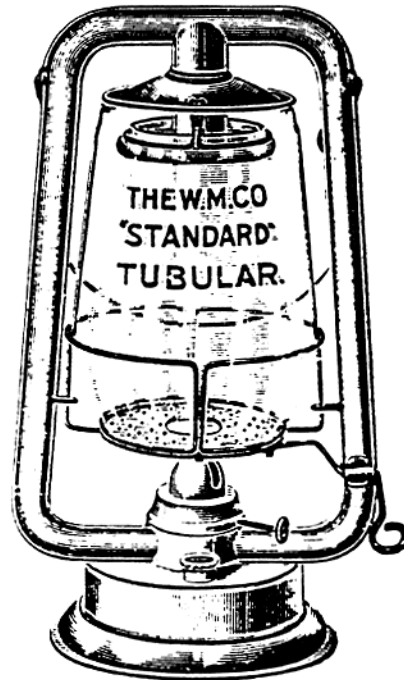
SIDE LIFT.

SEE DESCRIPTION of LANTERNS for STYLE LIFT USED.

THE WINFIELD MANUFACTURING COMPANY.



BOTTOM LIFT.



SIDE LIFT.

No. 0 "STANDARD" TUBULAR LANTERN.

Neat—Strong—Durable and Practical.

These Lanterns are made with an Oil Fount of liberal capacity, drawn from Heavy Steel Tin Plates, and carefully tested for leaks before setting up, insuring the purchaser against a trip to the tin shop before having a Lantern that can be used.

Our features of Special Lifts make this Lantern in every way desirable as a seller, and practical in use.

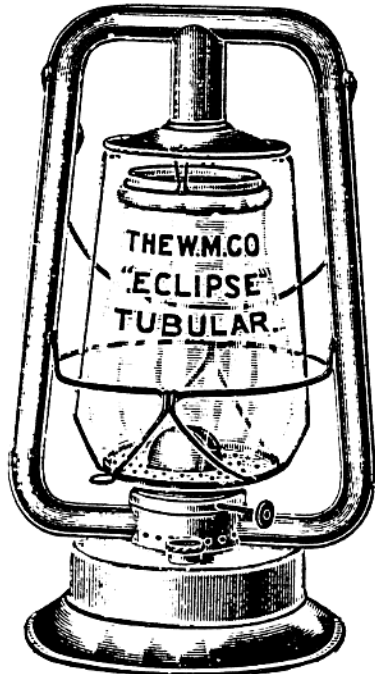
—PRICE—

No. 0 "Standard" Tubular, with Best White Globes..... \$9.50 per Doz:

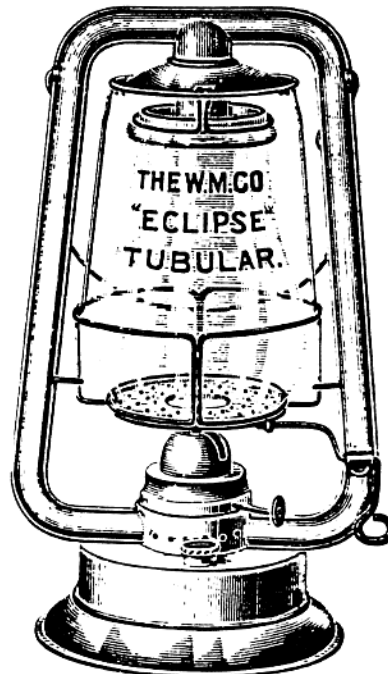
With Either "BOTTOM LIFT" or "SIDE LIFT," as Preferred.

PACKED IN CASES OF ONE DOZEN.

THE WINFIELD MANUFACTURING COMPANY.



BOTTOM LIFT.



SIDE LIFT.

No. 2 "ECLIPSE" TUBULAR LANTERN.

With No. 2 Burner—Extra Large Fount.

This Lantern embodies all of the special features, and is uniform in style and construction with the "Standard," but has a Very Large Fount, with a No. 2 Burner, which takes a One Inch Wick, is in every way a First-Class and desirable Article, and where more than ordinary light is wanted, will fully meet requirements.

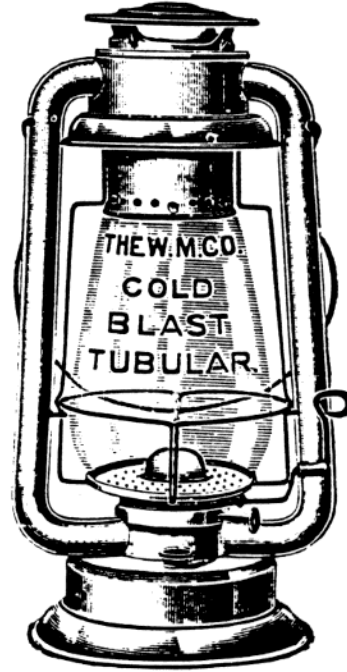
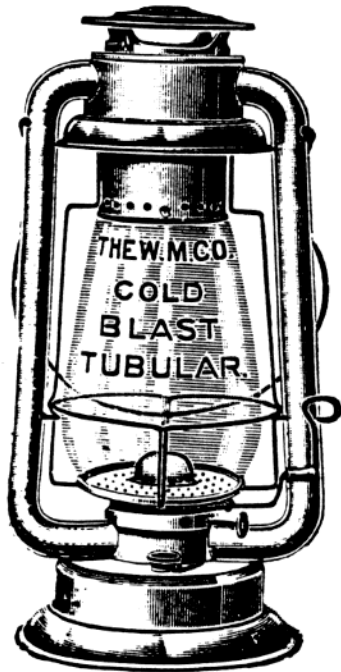
—PRICE—

No. 2 "Eclipse" Tubular, with Best White Globes.....\$13.00 per Doz.

With Either "BOTTOM LIFT" or "SIDE LIFT," as Preferred.

PACKED IN CASES OF ONE DOZEN.

THE WINFIELD MANUFACTURING COMPANY.



No. 2 "CYCLONE" (COLD BLAST) TUBULAR LANTERN.

With No. 2 Burner—Extra Large Fount.

These Lanterns are made with Two-Piece Side Tubes; furnished with either Bottom Lift or Side Lift arrangement, and embodies special features for the removal of Globe, give a large light and are especially adapted for use in strong winds.

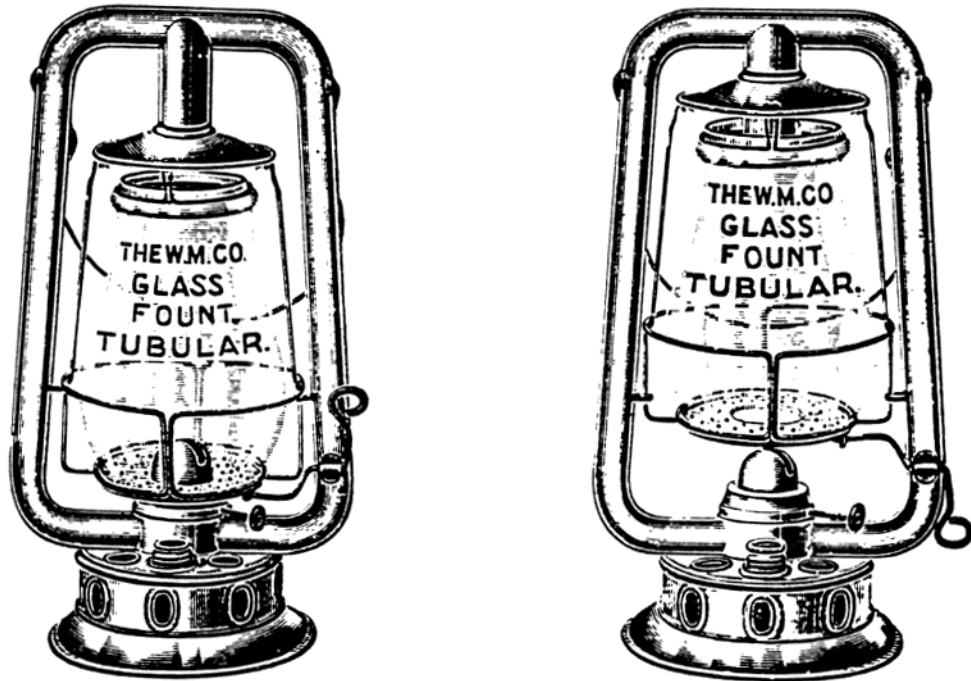
—PRICES—

No. 2 "Cyclone" (Cold Blast), with White Globes	\$16.00	per Doz.
No. 2 " " Dash Attachment—Plain Tin—Plain Globe	19.50	"
No. 2 " " " " " " B. E. "	20.00	"
No. 2 " " " " Japanned—Plain "	20.00	"
No. 2 " " " " " " B. E. "	20.50	"

Made with "SIDE LIFT" Arrangement Only.

PACKED IN CASES OF ONE-HALF DOZEN.

THE WINFIELD MANUFACTURING COMPANY.



No. 0 "GOOD ENOUGH" TUBULAR LANTERN.

With Heavy Glass Oil Fount.

The Lanterns are provided with a Heavy Glass Oil Fount, thoroughly and securely protected from injury by a strong Tin Jacket which surrounds it, having openings at Side and Top, showing at a glance the quantity of Oil in the Fount, and enabling the user to fill without running it over. The foot of the Lantern is detachable, through which the Fount can be easily removed for cleaning, or in case of accident.

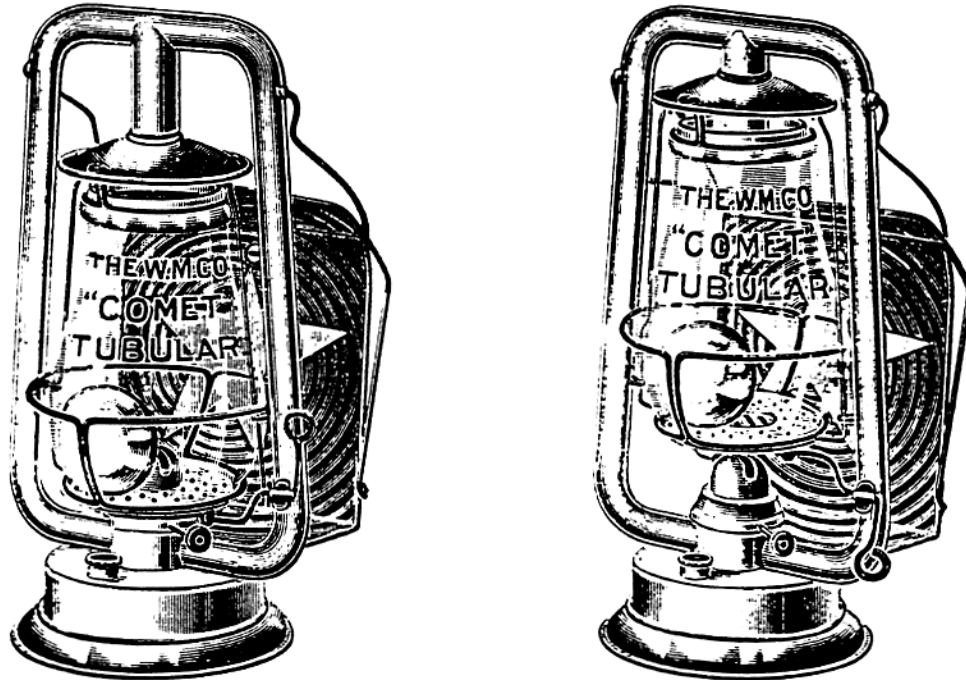
—PRICE—

No. 0 "Good Enough" Tubular, with Best White Globes..... \$13.00 per Doz.

Made with "SIDE LIFT" Arrangement Only.

PACKED IN CASES OF ONE DOZEN.

THE WINFIELD MANUFACTURING COMPANY.



No. 0 "COMET" DASH LANTERN.

With Reflector and Dash Attachment.

Uniform in size with "Standard" Lantern, has our feature of Special Lift and Guard, and a large sized Corrugated Reflector with a strong Wire Spring for attaching to Dash: As Globe is protected by Guard, they make a good general purpose Lantern.

—PRICES—

No. 0 "Comet," Plain Tin and Plain Globe.....	\$12.50 per Doz.
No. 0 " " " Bull's Eye Globe.....	13 00 " "
No. 0 " " Japanned Blue and Plain Globe.....	13.00 " "
No. 0 " " " Bull's Eye Globe.....	13.50 " "

Made with "SIDE LIFT" Arrangement Only.

PACKED IN CASES OF ONE-HALF DOZEN.

Japanned, with B. E. Globe Furnished Unless Otherwise Specified.

For Discounts and other Infor-
mation not contained in this

C A T A L O G U E

—WRITE TO—

Warren McArthur

EXCLUSIVE SALES AGENT

CHICAGO, ILLINOIS
